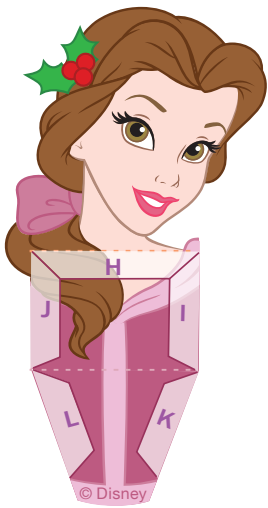
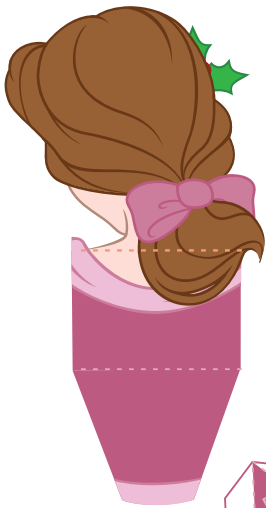


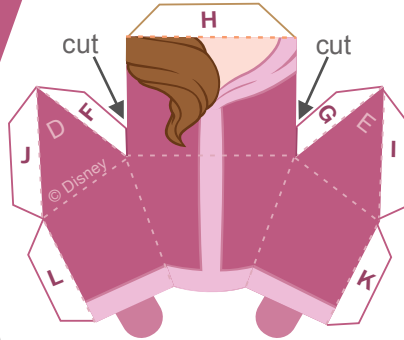
Holiday Belle 3D Papercraft



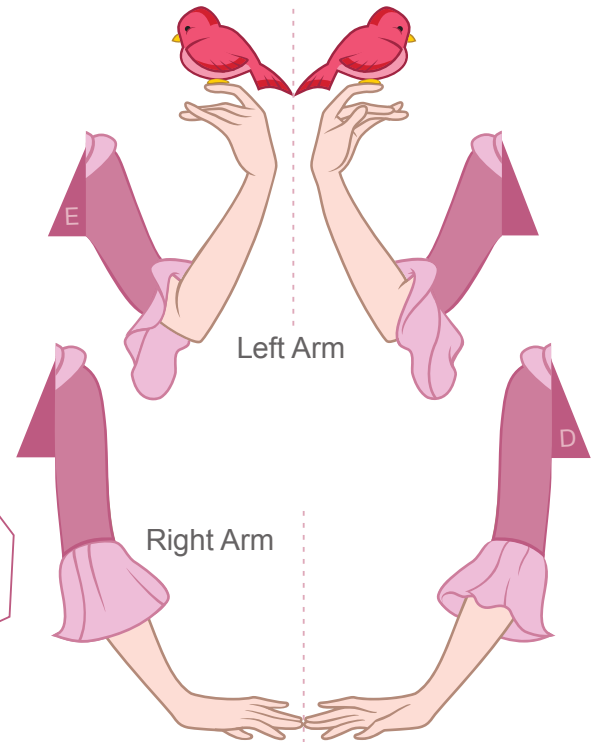
Torso



Back



Chest

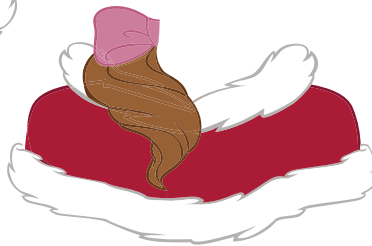


Left Arm

Right Arm



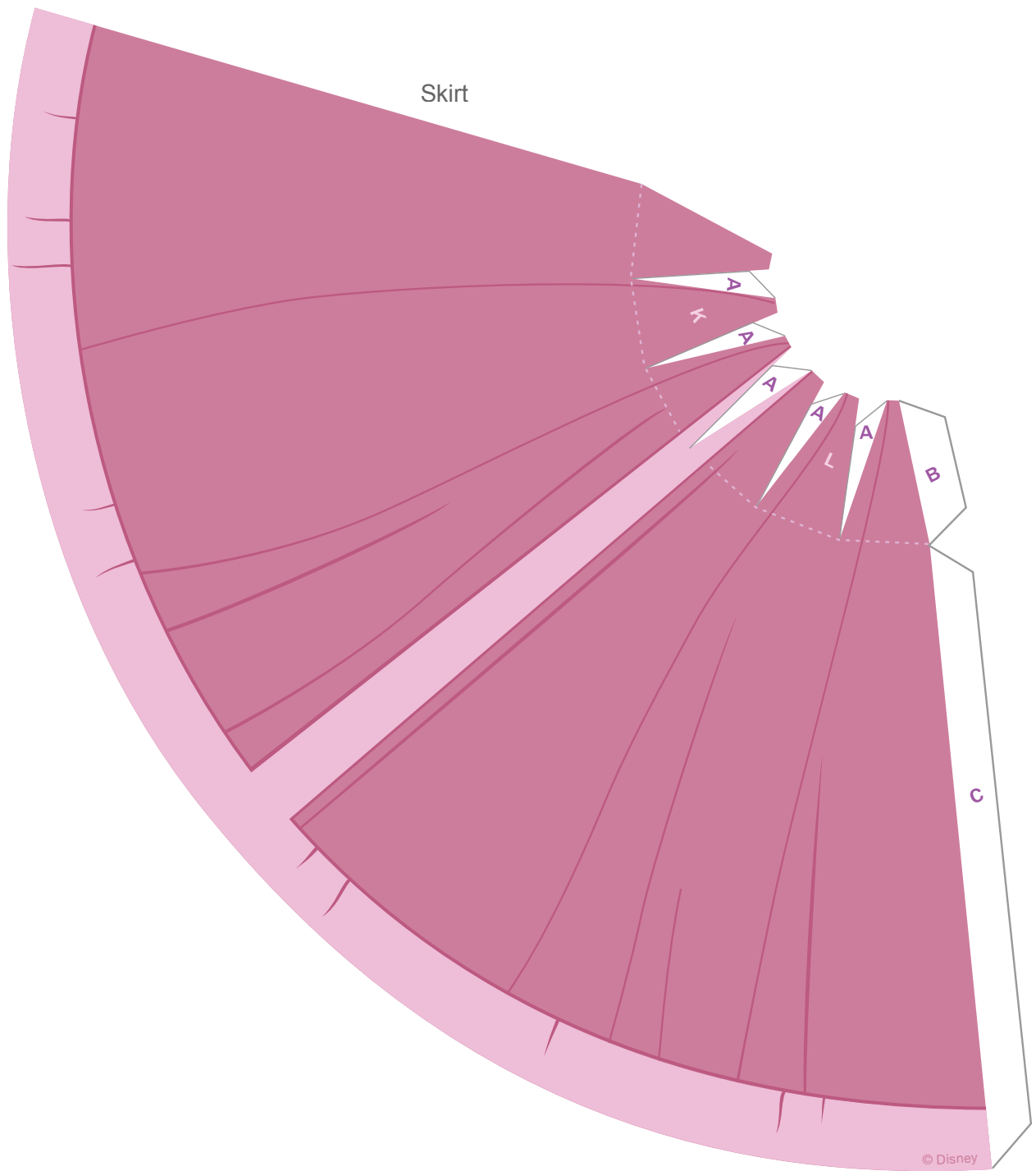
Back Cape



Cape Wrap



Front Cape



Holiday Belle 3D Papercraft

Instructions

1. Print out your princess on regular paper or cardstock and cut out the pieces. Do not cut along the dashed lines -- this is where you will fold the paper.
2. Line up Belle's Back with her Torso. Using glue or double-sided tape, secure the pieces together so the design is two-sided. Fold the bottom part of Belle's Torso towards you along the dashed line, and then fold her face away from you along the dashed line across her shoulders.
3. Make all folds on Belle's Chest piece away from you, and then secure the F and G tabs to the back, white side of her chest.
4. Spread glue on the H tab on her Chest and press it into place on the H area on her Torso. Make sure her shoulders are lined up correctly. Repeat this for the I, J, K, and L tabs. You may need to use a pen or pencil inside her chest area to position the tabs just right.
5. Fold each arm in half along the center dashed line and secure with glue so the design is two-sided. Make sure the sides are lined up before the glue dries. Use the D and E tabs to attach the arms to the sides of her body under each shoulder where indicated with the letters D and E.
6. Glue the Back Cape to the Front Cape so the design is two-sided. Line up the completed cape with the back of Belle's shoulders and hair and glue it in place. Line up the Cape Wrap with the front of her shoulders and hair and glue it in place. Optional -- Glue the sides of the Cape Wrap to the sides of the Back Cape so it appears to wrap around her shoulders.
7. Cut slits in the top of the skirt along the solid grey lines next to each A tab. Fold each A tab away from you. Make folds along all dashed lines away from you.
8. Starting from left to right with the pink side of the skirt facing you, glue each A tab to the back of the skirt piece next to it to create pleats. Complete the shape of the skirt with the B and C tabs. You may find it easier to glue the C tab to the inside of the skirt before gluing the final B tab pleat.
9. Attach the completed torso to her skirt by securing the tabs at her waist to the top of the skirt over the areas labeled K and L. The crease on the skirt should be in the back.