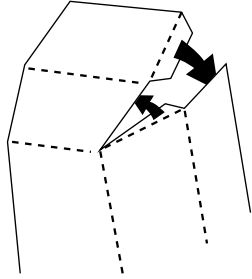




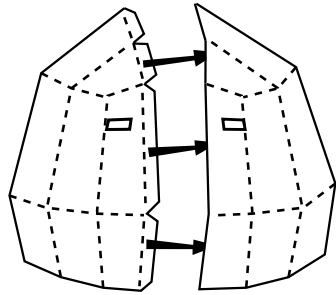
# FIRE ELEMENTOR MASK INSTRUCTIONS

**1** Cut mask parts along the SOLID lines. Cut out holes for eyes.

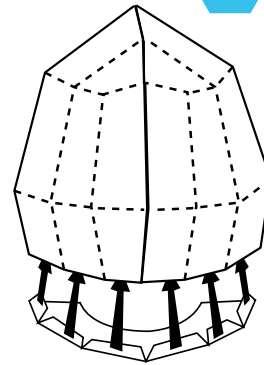


**2** Fold along the DOTTED lines. Fold and glue tabs.

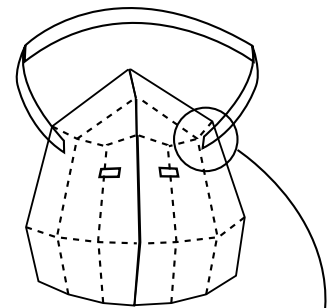
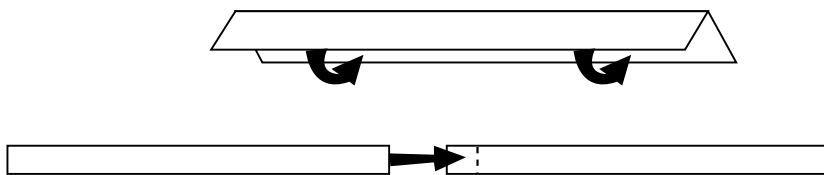
**3** When each half is dry, glue them together.



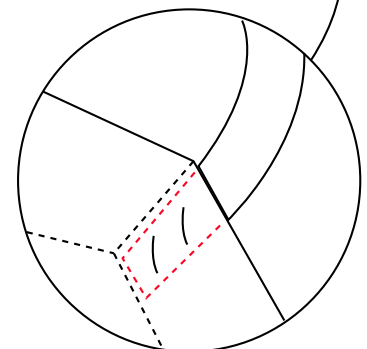
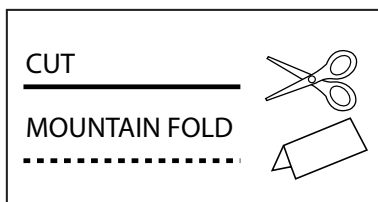
**4** Glue in the chin section.

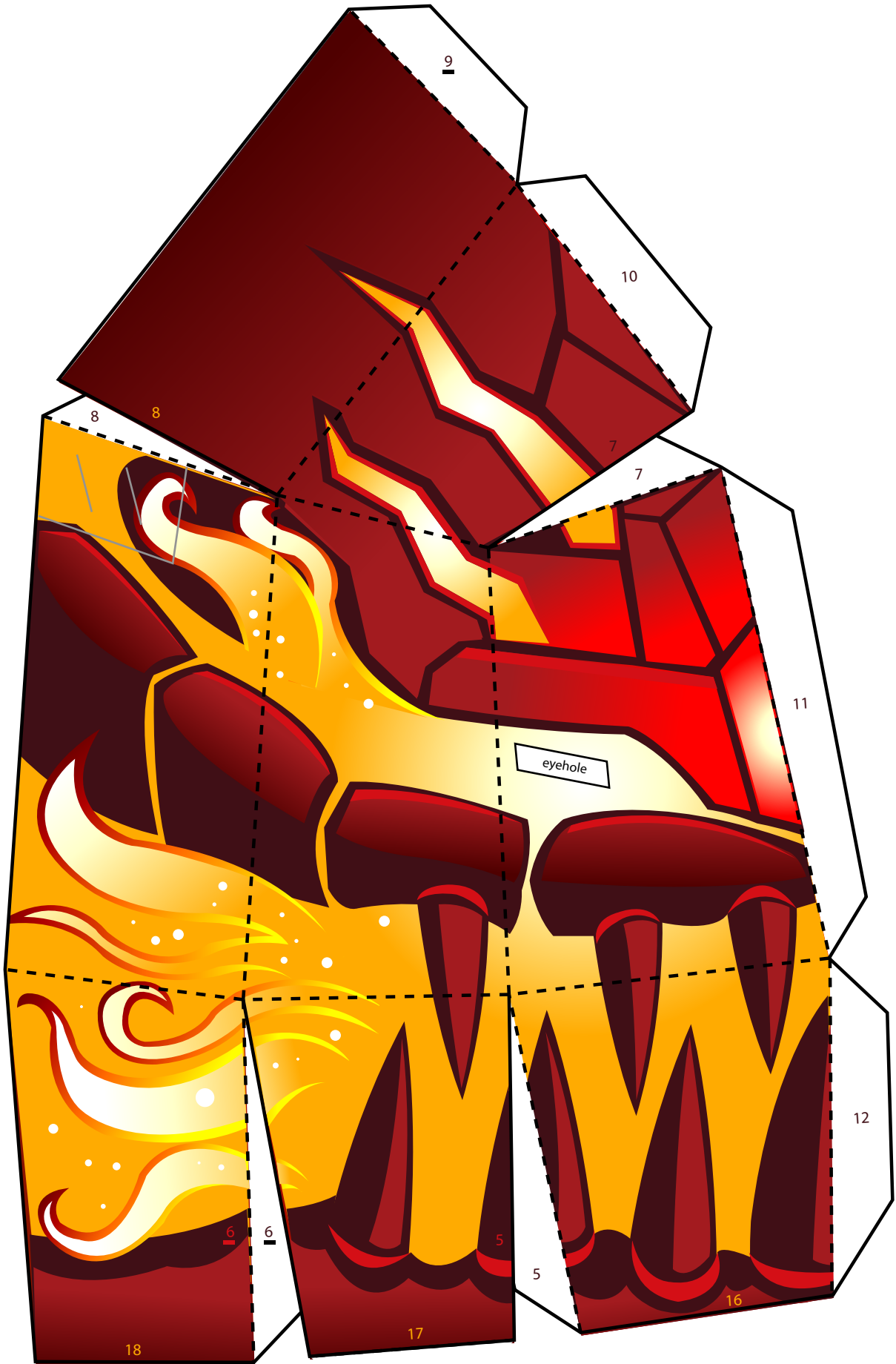


**5** Glue the strap parts together and staple to the mask as shown.

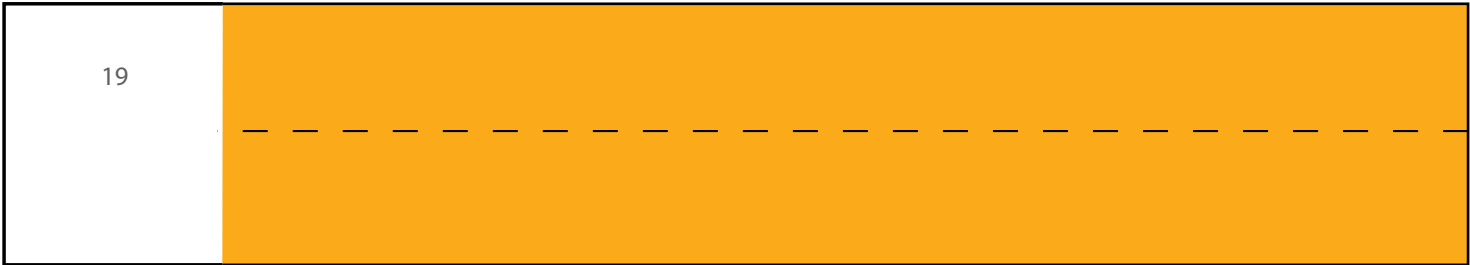


**6** GO TURBO!!!









Strap pieces

