



GETTING STARTED

1



CUT

2



SCORE

3



GLUE

- Cut solid lines and fold dotted lines.
- Fold all pieces upward or downward along score lines.

MOUNTAIN FOLD



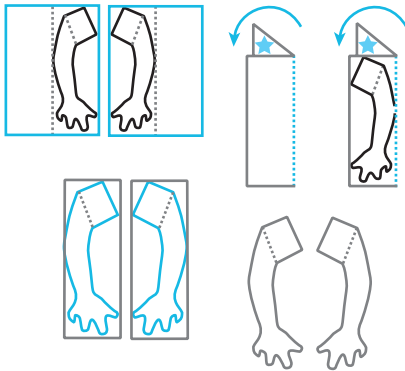
VALLEY FOLD



INSTRUCTIONS

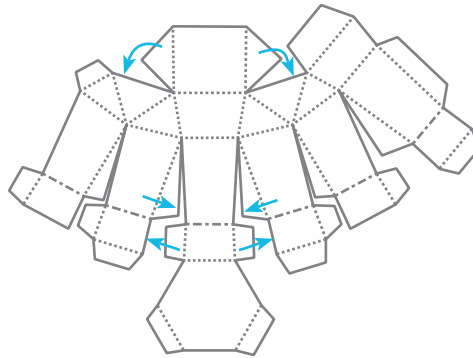
1

Cut out ARMS along outer solid lines. Fold center dotted lines and glue together. When dry cut along inner solid lines of ARMS.



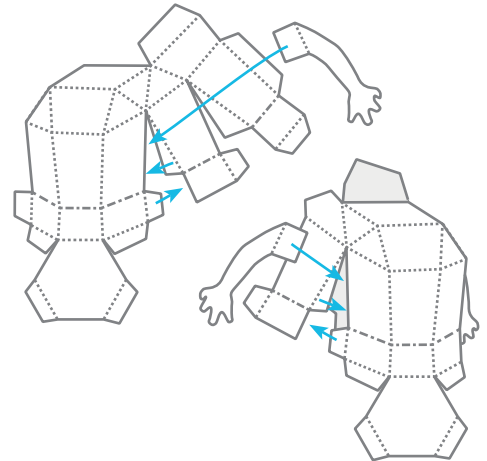
2

Cut out BODY along solid lines. glue tabs 01 - 06 as shown. Apply glue to the tab and secure behind the printed pieces.



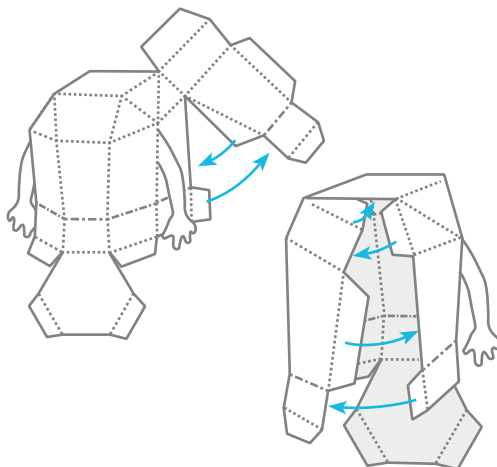
3

Glue tabs 07 - 09 as shown, and same thing with 10 - 12 on the right side. Glue ARMS so they line up with shoulders.



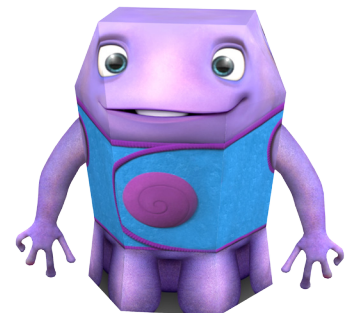
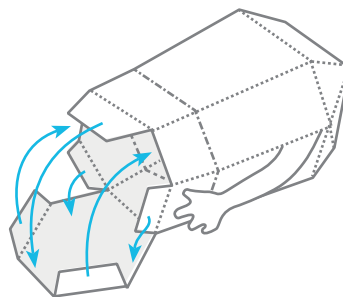
4

Glue tabs 13 - 14 on the left side. Then glue tabs 15 - 18 down the back.



5

Finish by gluing tabs 19 - 23 along Oh's feet.



Oh is now complete!

