



# House of Nikki



Perf accessory  
for your room.  
My house!



## Build Barbie And Her Friends' Homes!

- A: Barbie Dreamhouse
- B: House of Ken
- C: The Raquelle Mansion
- D: House of Nikki
- E: The Ryan Mansion
- F: Casa de Teresa

Your house will look like this:

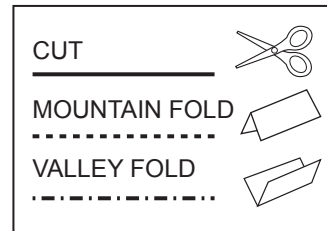




# House of Nikki

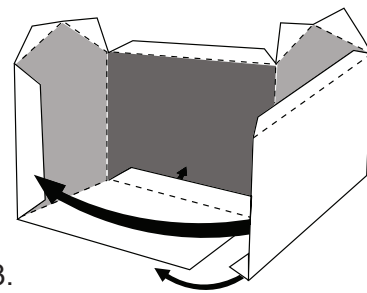
## INSTRUCTIONS

1. Use safety scissors to cut around the solid black lines.  
Ask a grownup if you need help.

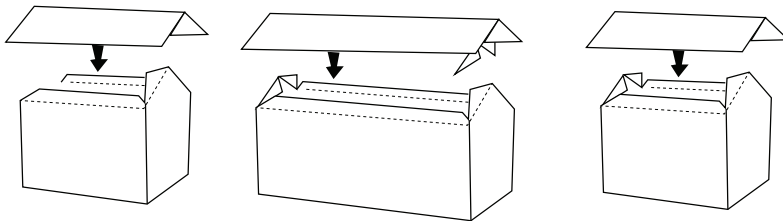


2. Fold along the dotted lines.

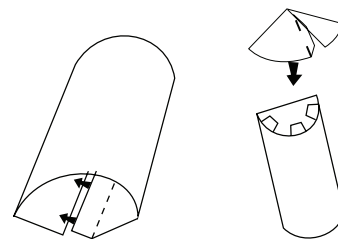
3. Glue tabs in number order on buildings 1, 2 and 3.



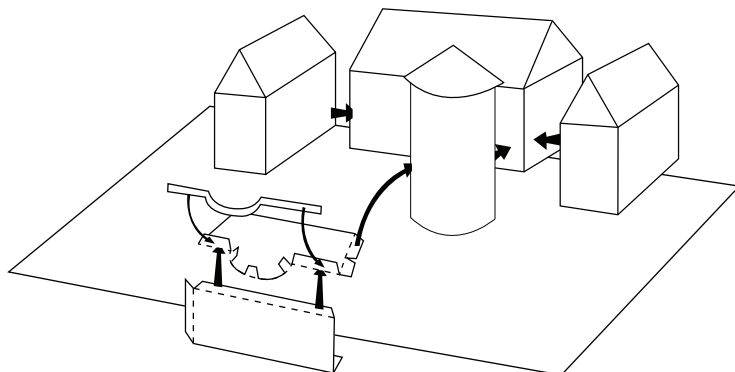
4. Once buildings are dry, affix roofs to buildings 1, 2 and 3.



5. Bend tower pieces as shown and affix tab.  
Glue roof piece to form cone. Fix to tower when dry.



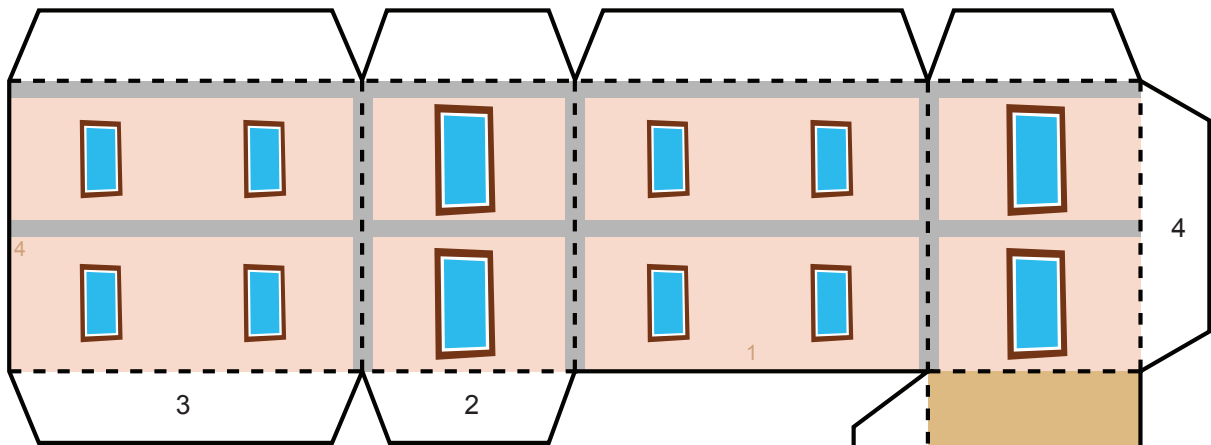
6. Glue building pieces together, then affix the tower.  
When dry, add balcony as shown. Glue to base.



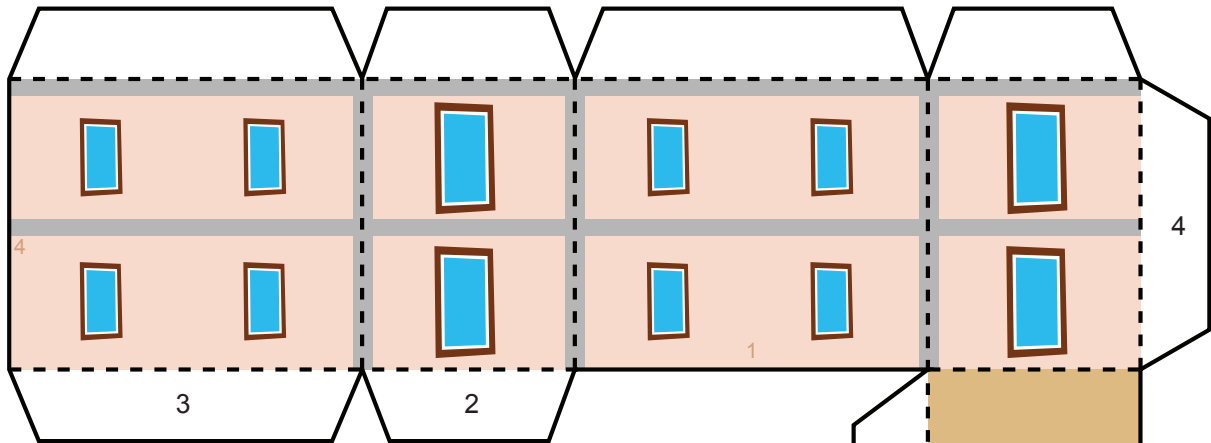
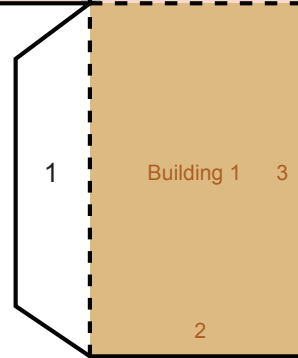
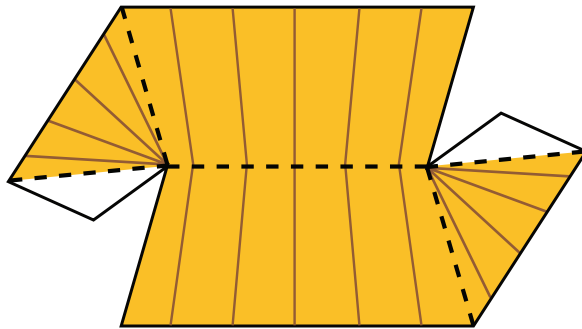


# House of Nikki

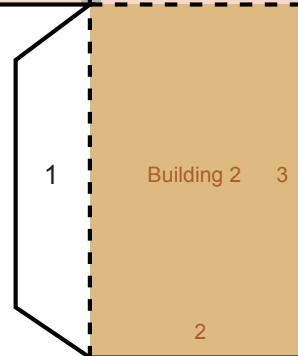
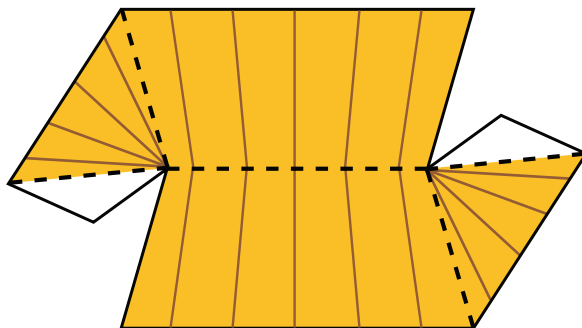
## BUILDINGS 1 & 2 AND ROOFS 1 & 2



Roof 1



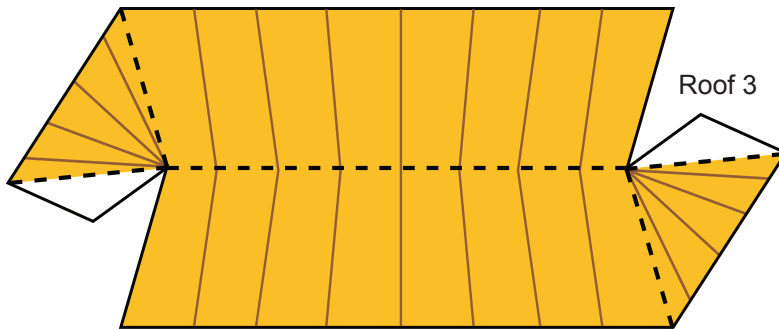
Roof 2



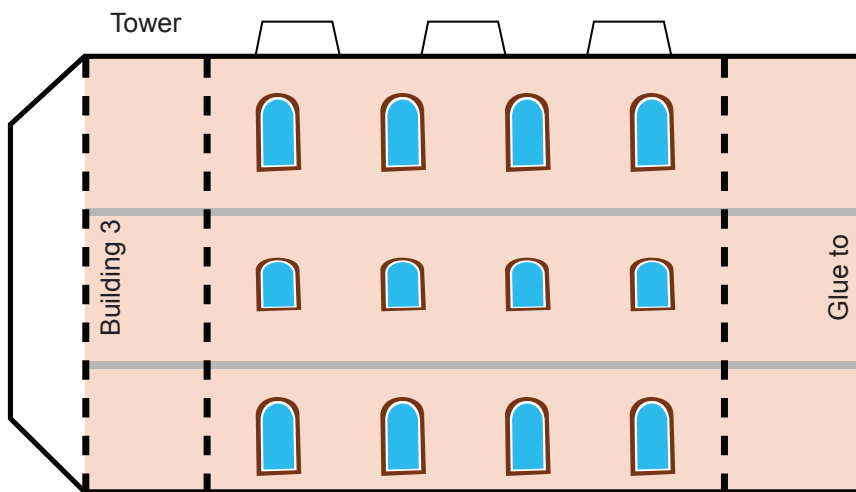


# House of Nikki

## BUILDING 3, BALCONY & TOWER



Roof 3

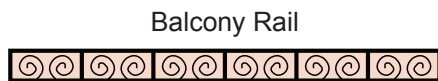


Tower

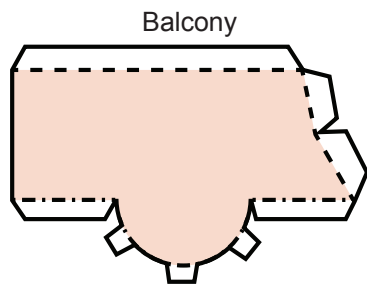
Building 3

Glue to

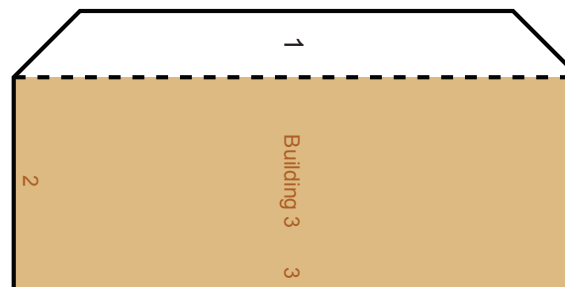
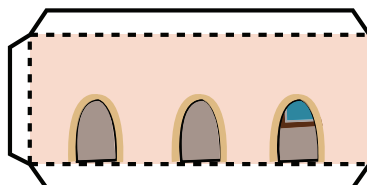
Tower Roof



Balcony Rail



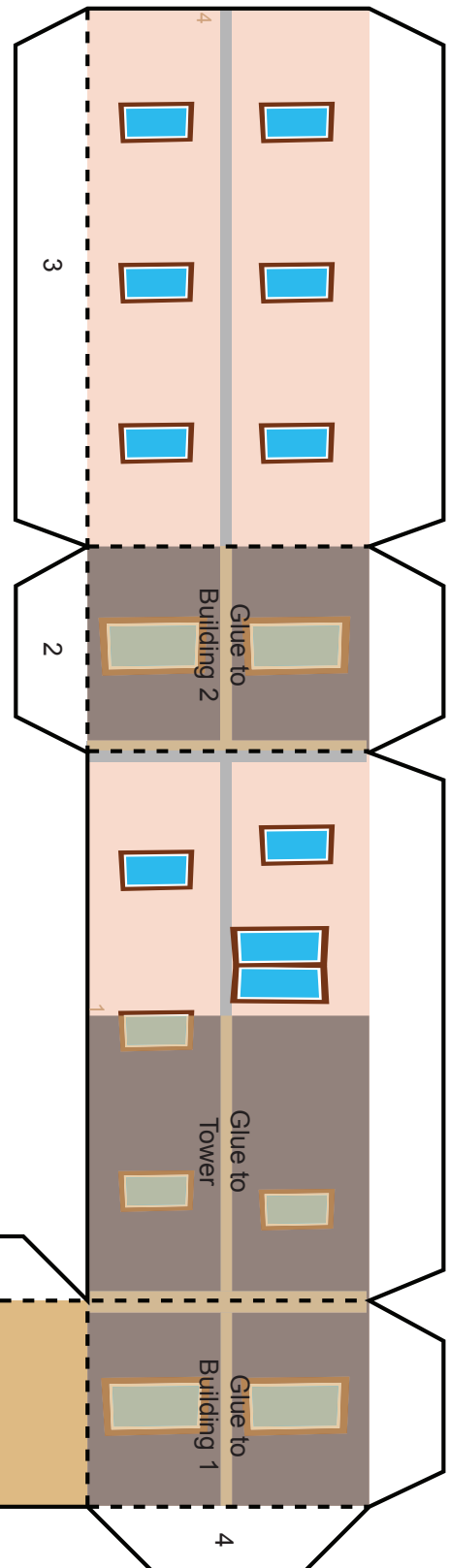
Balcony



1

Building 3

3



3

2

1

4

4

Glue to

Building 2

Glue to

Tower

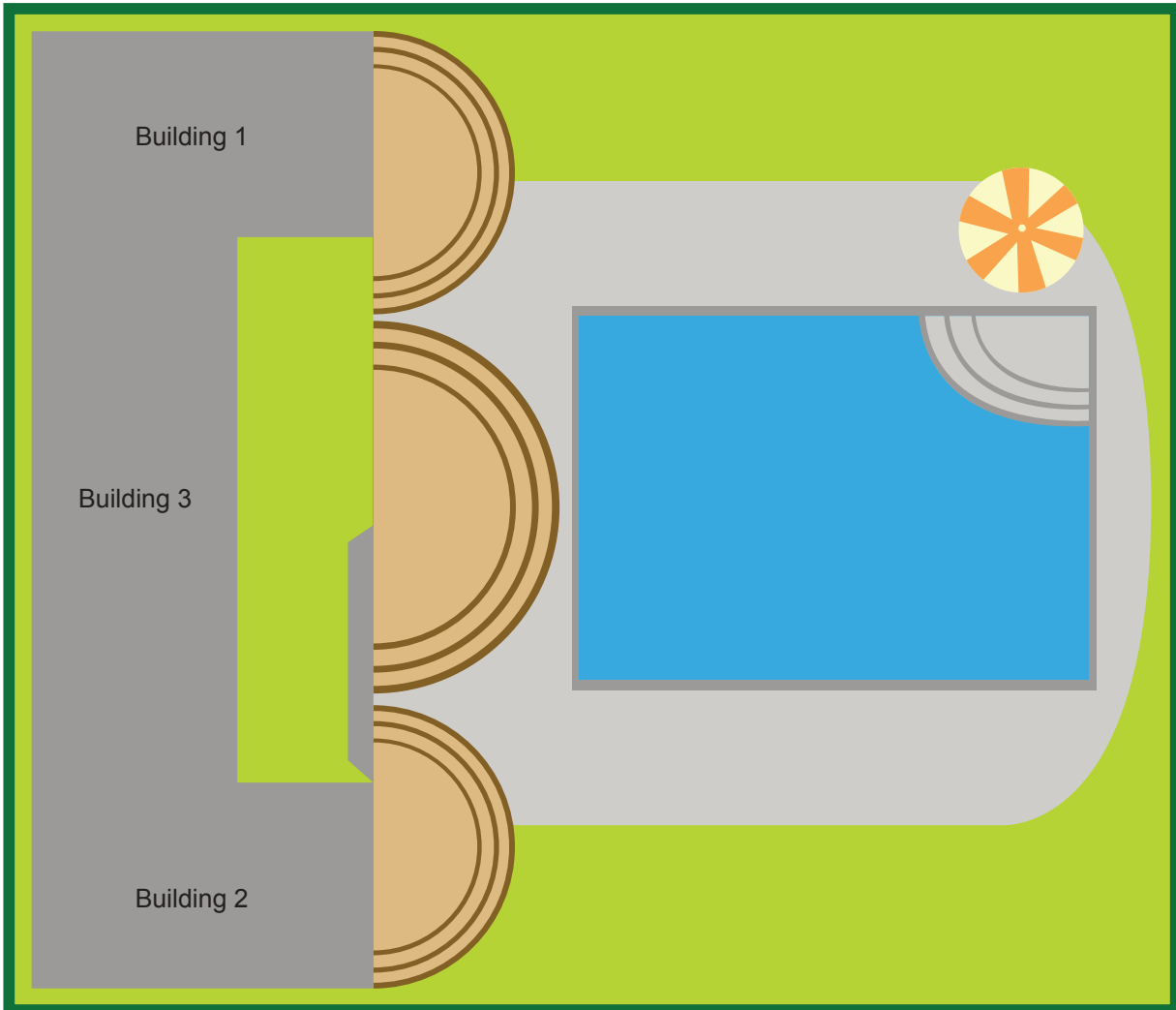
Glue to

Building 1



# House of Nikki

## BASE

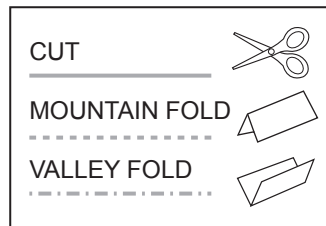




# Nikki

## INSTRUCTIONS

1. Use safety scissors to cut out Nikki.  
Ask a grownup if you need help.
2. Cut along the solid lines and  
fold on the dotted lines.



3. Glue or tape together the front and  
back of the play pieces.

Your Nikki will look like this:

