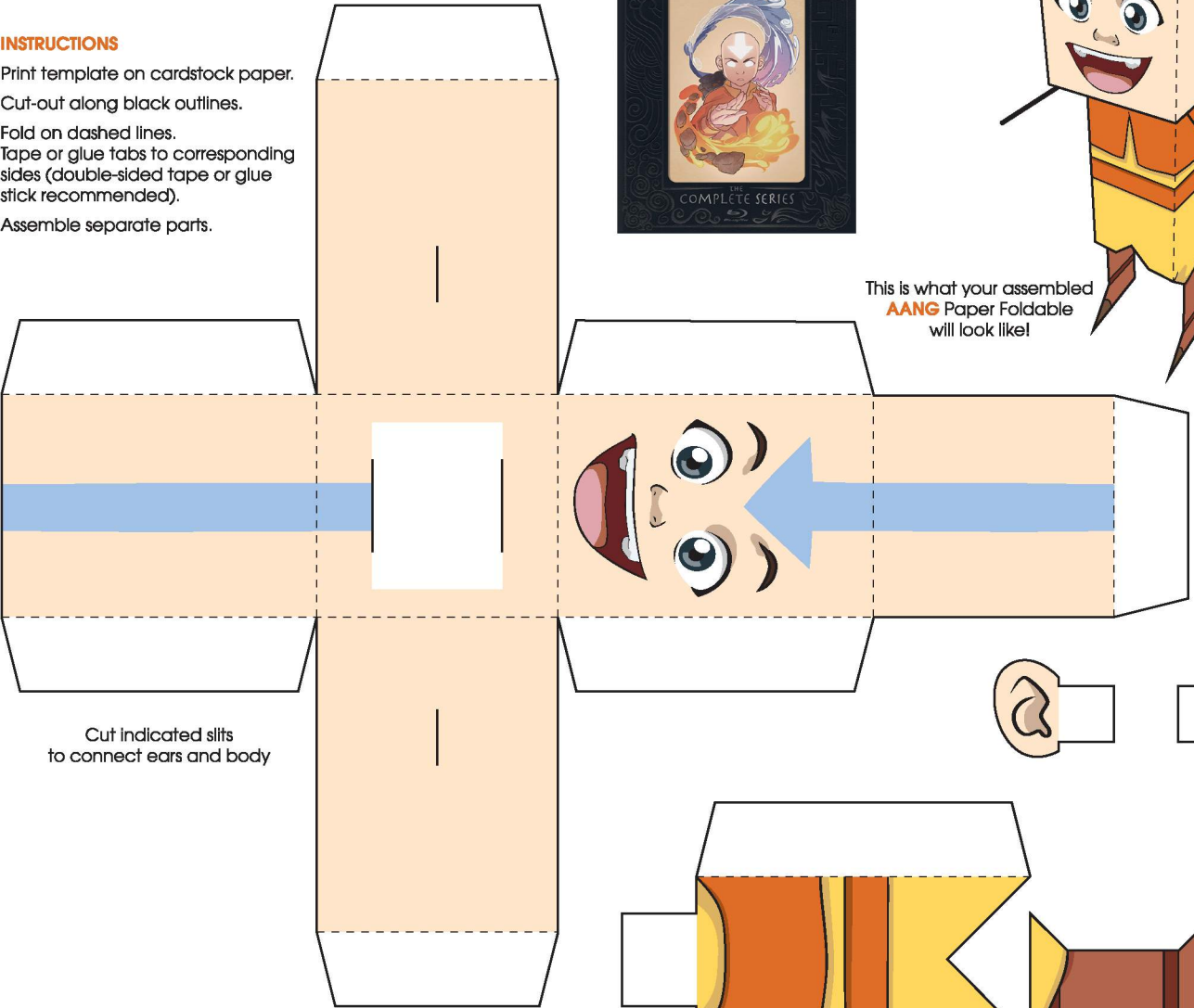


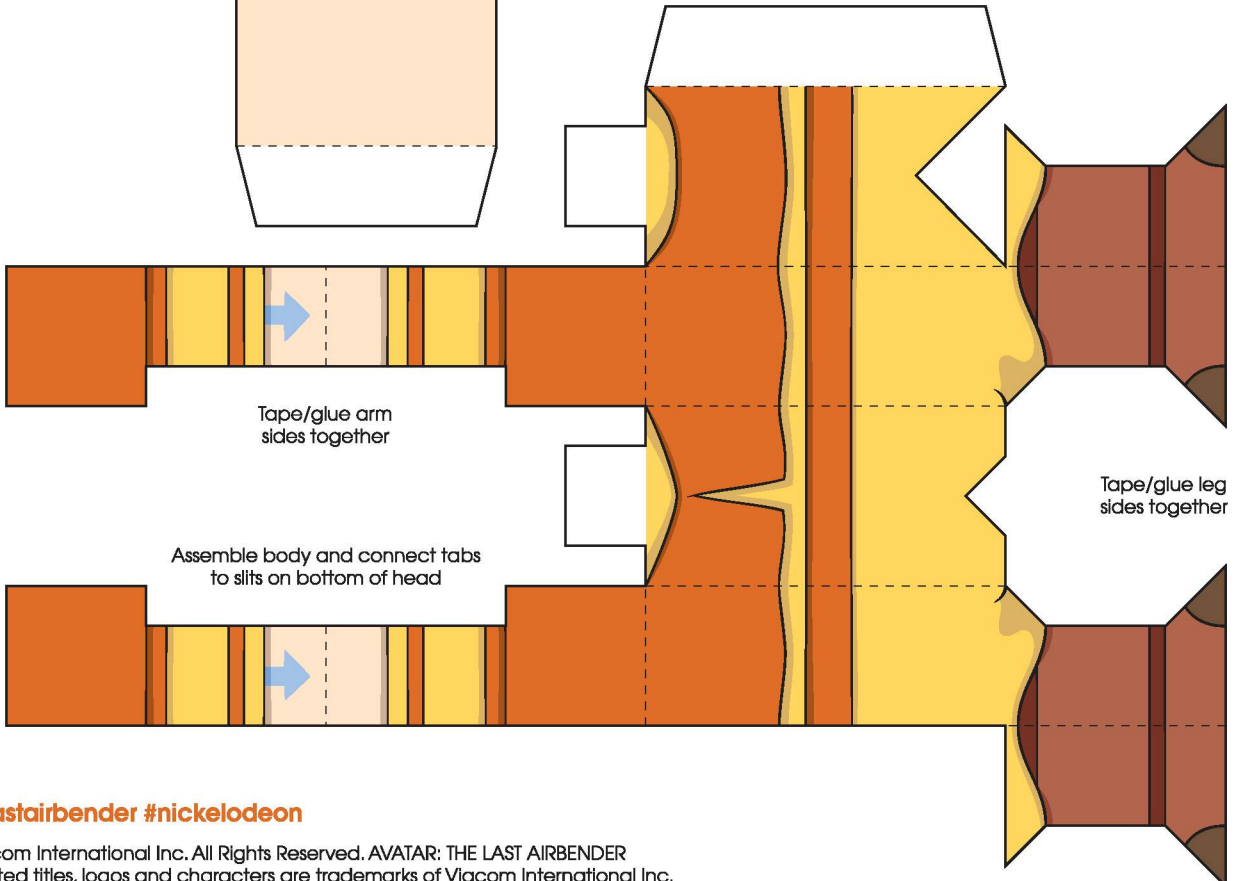
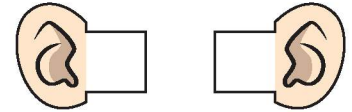
This is what your assembled **AANG** Paper Foldable will look like!

INSTRUCTIONS

- Print template on cardstock paper.
- Cut-out along black outlines.
- Fold on dashed lines.
- Tape or glue tabs to corresponding sides (double-sided tape or glue stick recommended).
- Assemble separate parts.



Cut indicated slits to connect ears and body



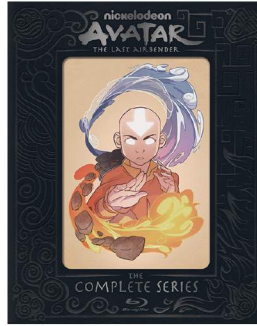
Tape/glue arm sides together

Tape/glue leg sides together

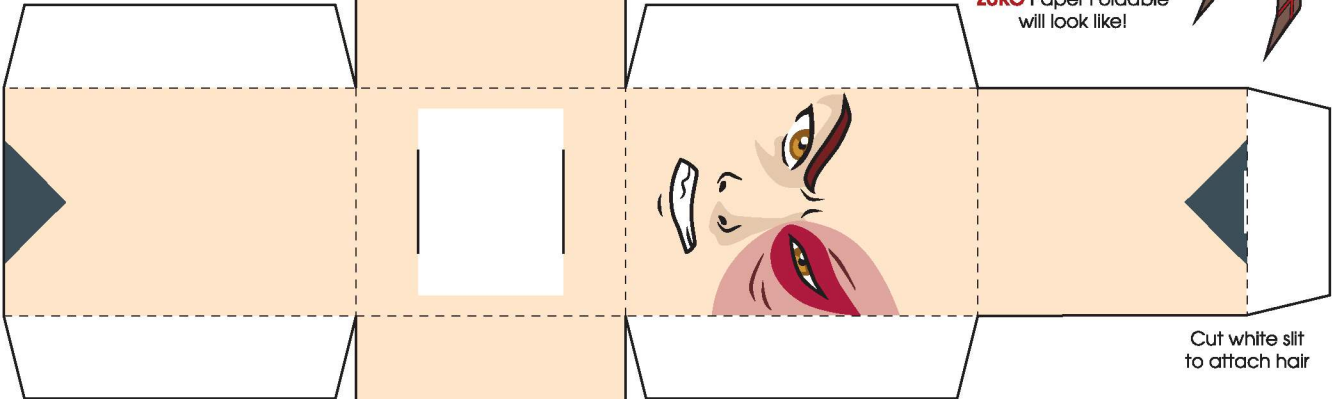
Assemble body and connect tabs to slits on bottom of head

INSTRUCTIONS

- Print template on cardstock paper.
- Cut-out along black outlines.
- Fold on dashed lines.
- Tape or glue tabs to corresponding sides (double-sided tape or glue stick recommended).
- Assemble separate parts.

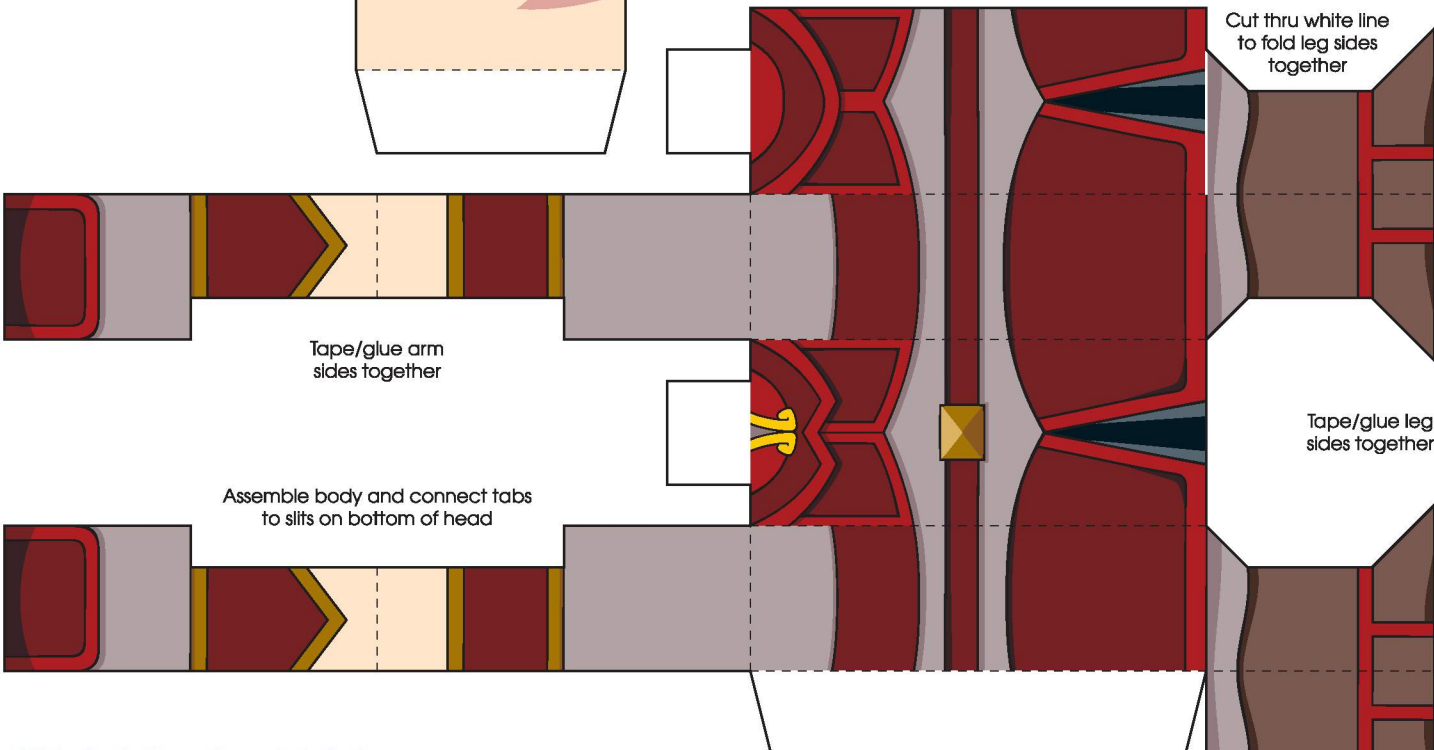
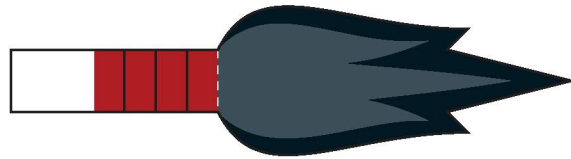


This is what your assembled **ZUKO** Paper Foldable will look like!



Cut white slit to attach hair

Cut indicated slits to connect body



Cut thru white line to fold leg sides together

Tape/glue arm sides together

Assemble body and connect tabs to slits on bottom of head

Tape/glue leg sides together