



nickelodeon

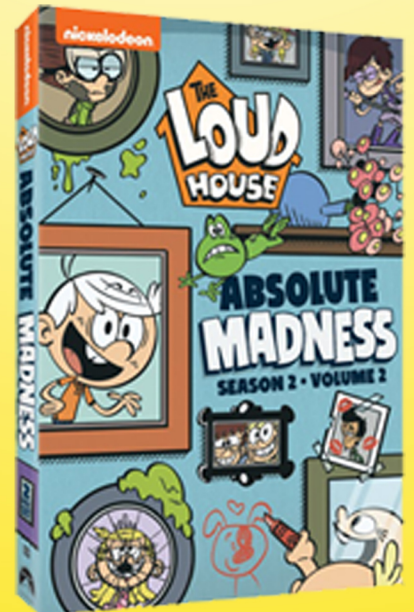


For your pizza bar, you'll need:

- ~Personal-sized pizza crust
- ~Tomato sauce
- ~Shredded mozzarella cheese
- ~Bowls for toppings
- ~Black Olives (Lucy's goth olives)
- ~Mushrooms (Lincoln is a fun-gi)
- ~Spinach leaves (Lola's tooth fairy money)
- ~Pepperoni slices (Luna's guitar pick-a-roni-bonus if you cut these to be shaped like picks!)
- ~Chicken (Luan's rubber chicken)
- ~Banana peppers (Ba-Lana peppers)
- ~Pineapples (emoji's from Lori)
- ~Tomatoes (Leni's diced toma-totes)
- ~Sliced onions (Lisa's radioactive worms)
- ~Meatballs (Lynn's meatballs)
- ~Mozzarella (mozza-Lily Cheese)
- ~Pickles (Clyde's secret pickle stash)

Directions:

1. Preheat your oven to 350 degrees.
2. Divide the spinach, cheese, pepperoni, and cheese into different bowls. If you're using the name cards, be sure to set them up as well.
3. Have each person spread tomato sauce over their pizza crust.
4. Top with shredded cheese.
5. Add as many toppings as you'd like!
6. Have an adult place pizza crusts in the oven and cook for 15 minutes.
7. Take out pizza crusts and let cool.





PRINTABLE TABLE CARDS

