



3D MR. PEABODY



GETTING STARTED



* Cut out all pieces along the solid lines. Don't forget to keep the tabs on the cutouts - you'll need them to glue pieces together.

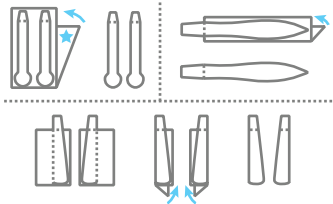
* Fold all pieces upward or downward along score lines.



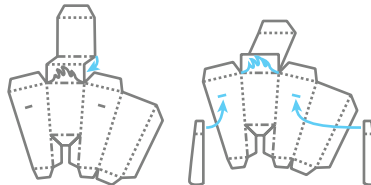
INSTRUCTIONS

Mr. Peabody

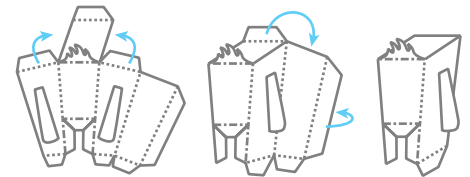
- 1** Cut out ARMS, EARS, and TAIL along the outer rectangle's solid line. Fold on the dotted line and glue the two halves together. Once dry, cut along the inner solid lines.



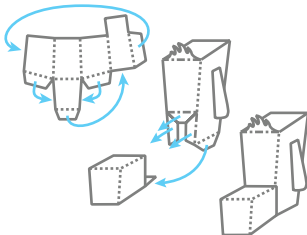
- 2** Cut all solid gray lines of HEAD. Fold dotted line above hair piece and glue them together as shown below. Once dry, cut along the solid hair line. Insert EARS and glue tabs 1 & 2 on inside of HEAD.



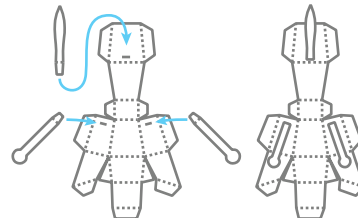
- 3** Fold HEAD piece along dotted lines. Pay attention to valley and mountain folds. Glue tabs 3 - 6.



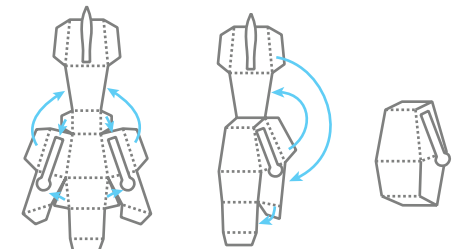
- 4** Fold the SNOUT and glue tabs 7 - 10. Then attach SNOUT to HEAD with tabs 11 - 16.



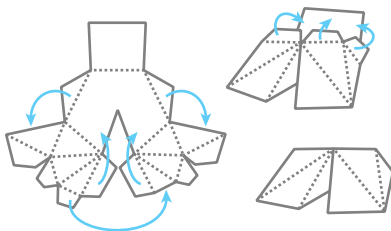
- 5** Cut the 3 short solid lines in BODY for the ARMS and TAIL. Insert ARMS and TAIL glue tabs 17 - 19 to the inside of BODY.



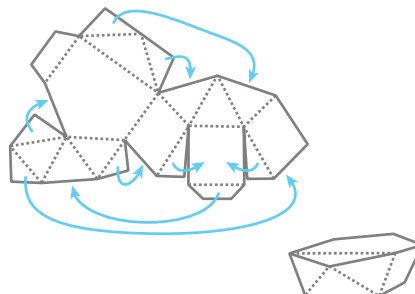
- 6** Fold and glue tabs 20 - 35 in order to complete the BODY.



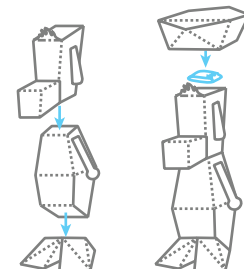
- 7** Fold the FEET piece and glue tabs 31 - 34. Then valley fold and glue tab 35 to connect inside. Then glue tabs 36 - 39 to complete FEET.



- 8** Fold HAT and glue tabs 40 - 49. The front of HAT is the end where the top fold is.



- 8** To put Mr. Peabody together, first glue FEET to BODY. Then glue HEAD onto BODY. Then tape or glue HAT on HEAD. Use tape so you can remove it later.

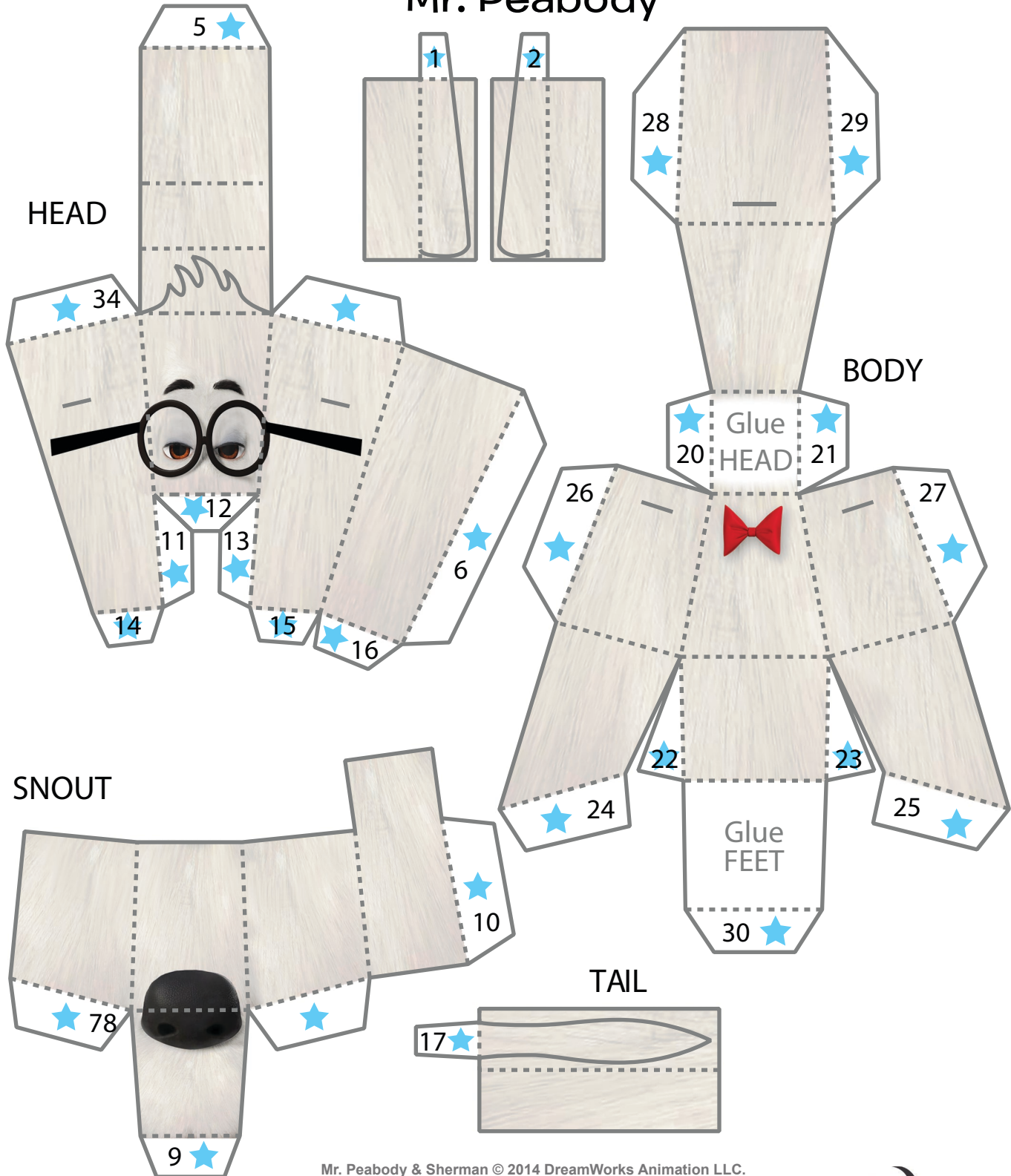


Mr. Peabody is now complete!



3D MR. PEABODY

Mr. Peabody





3D MR. PEABODY

Mr. Peabody

LEFT
ARM

RIGHT
ARM

