



# 3D SHERMAN



## GETTING STARTED

1



CUT

2



SCORE

3



GLUE

\* Cut out all pieces along the solid lines. Don't forget to keep the tabs on the cutouts - you'll need them to glue pieces together.

\* Fold all pieces upward or downward along score lines.

MOUNTAIN FOLD



VALLEY FOLD

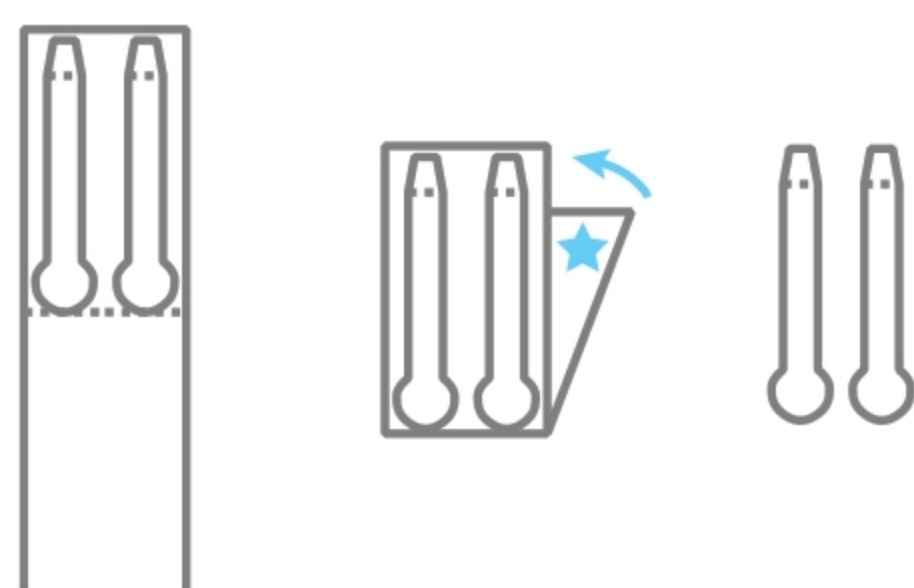


## INSTRUCTIONS

### Sherman

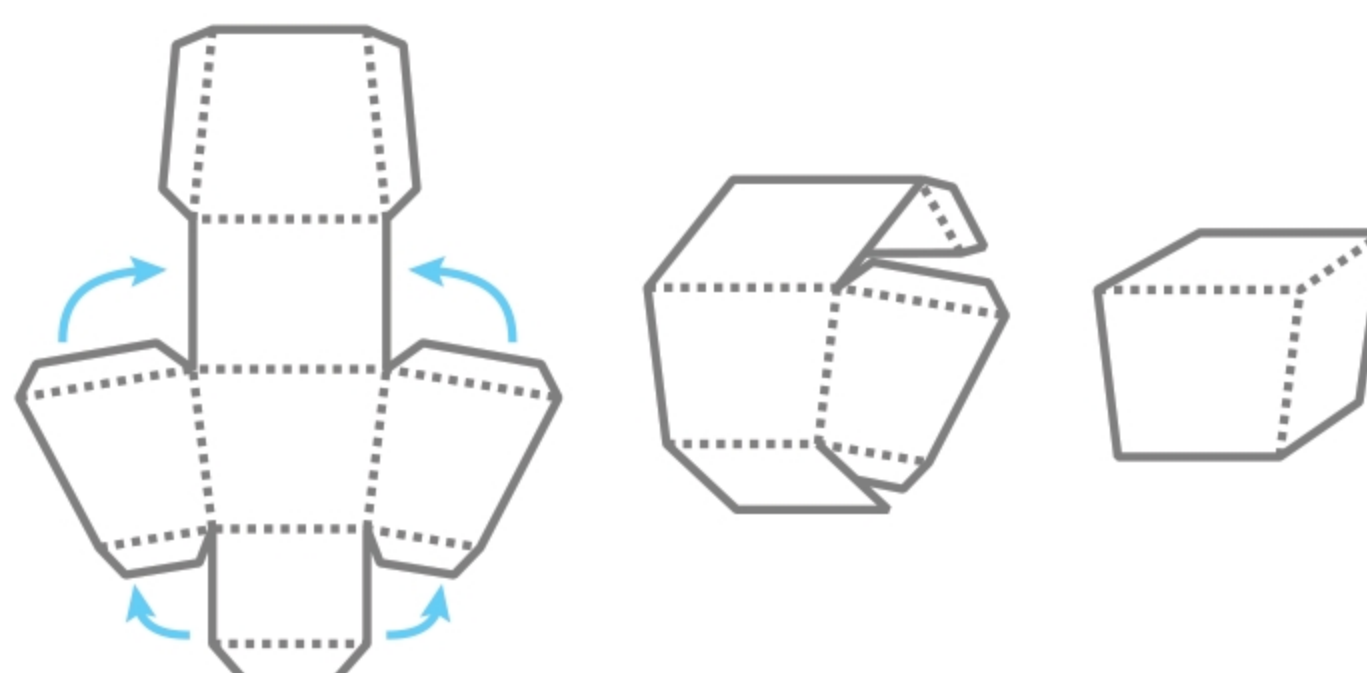
1

Cut out ARMS along the outer rectangle's solid line. Fold on the dotted line and glue the two halves together. Once dry, cut along the solid lines.



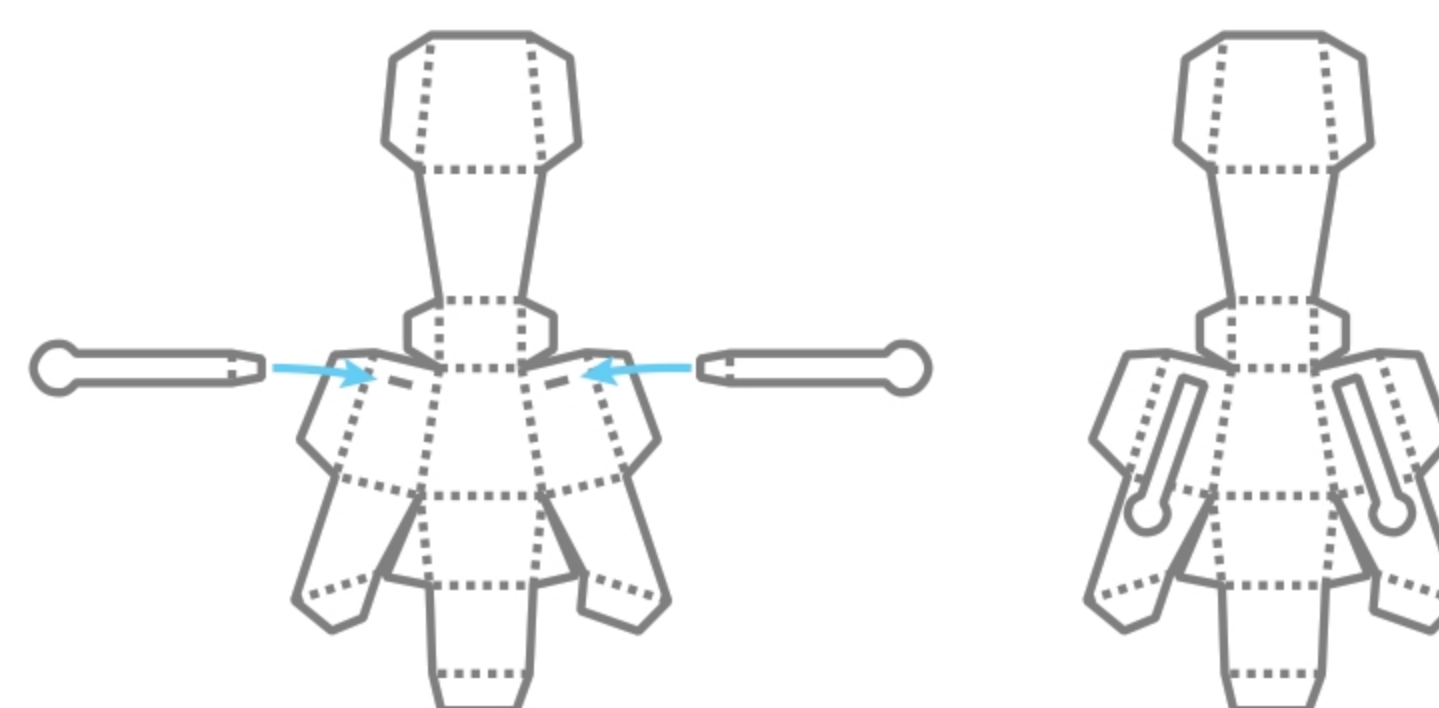
2

Fold HEAD and glue tabs 1 - 7 in order.



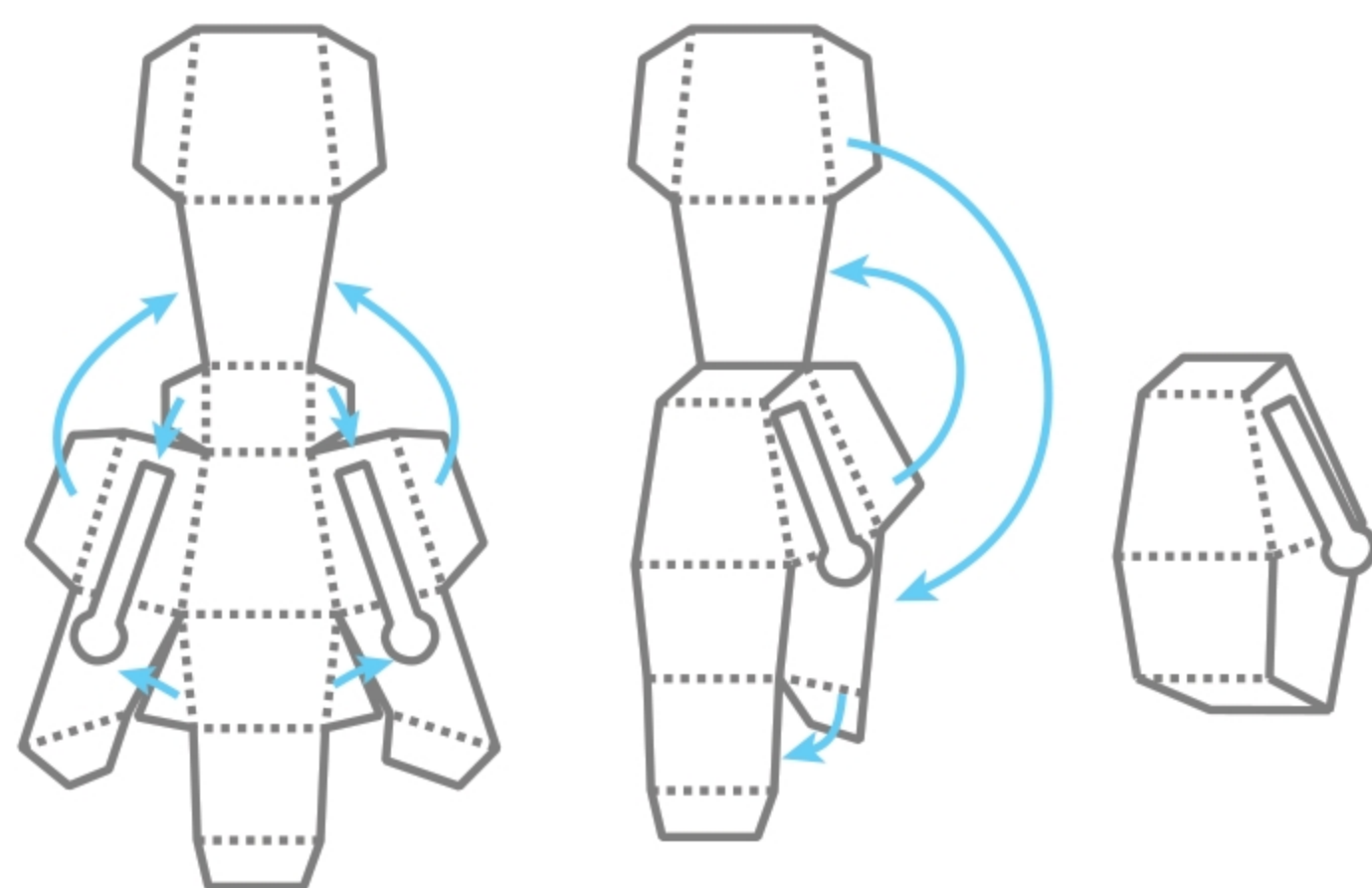
3

Cut the 2 short solid lines in BODY for the ARMS. Insert ARMS and glue tabs 8 & 9 on inside of BODY



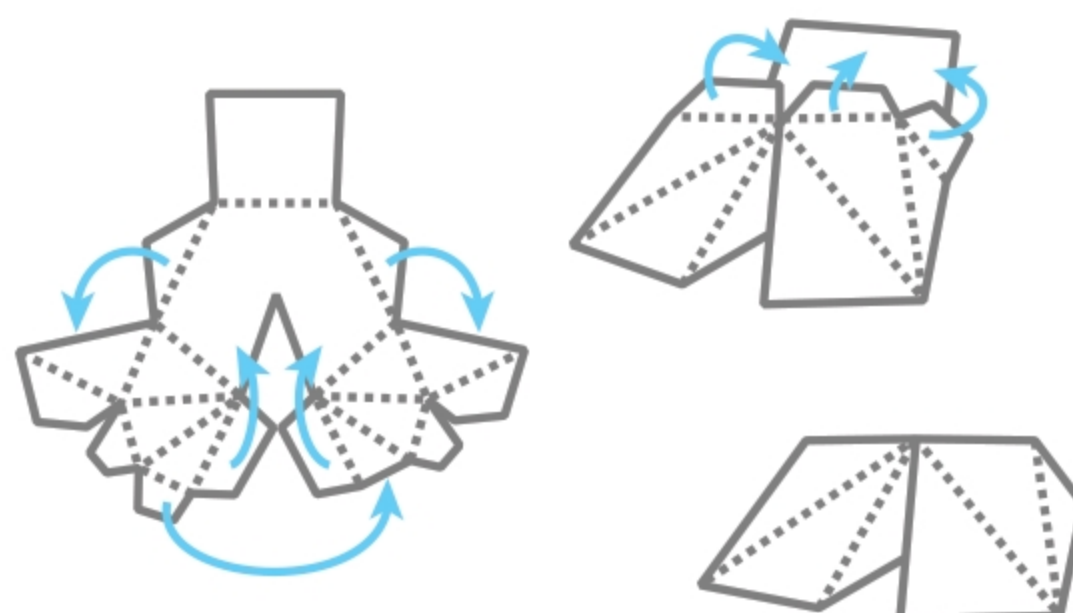
4

Glue BODY tabs 10 - 20 to complete the BODY piece.



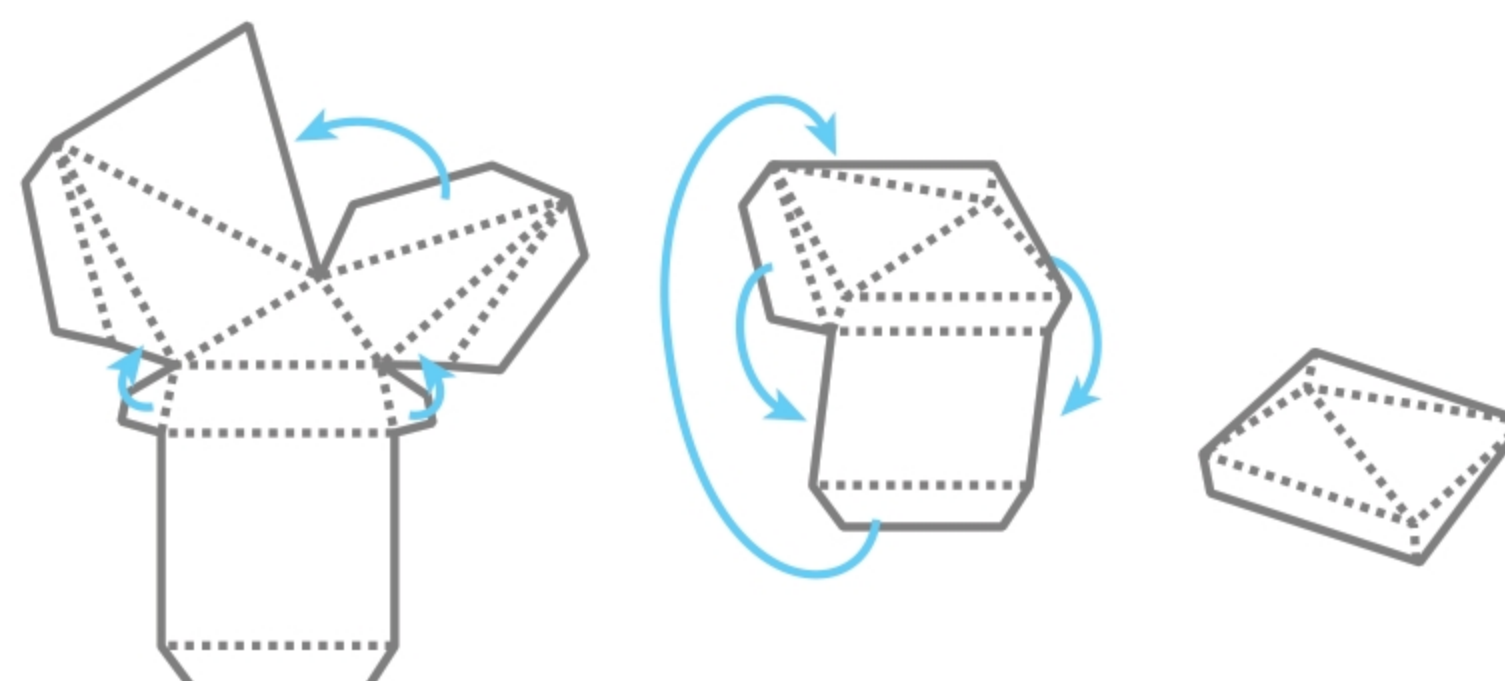
5

Fold the FEET piece and glue tabs 21 - 24. Then valley fold and glue tab 25 to connect the two feet. Then glue tabs 26 - 29 to complete FEET.



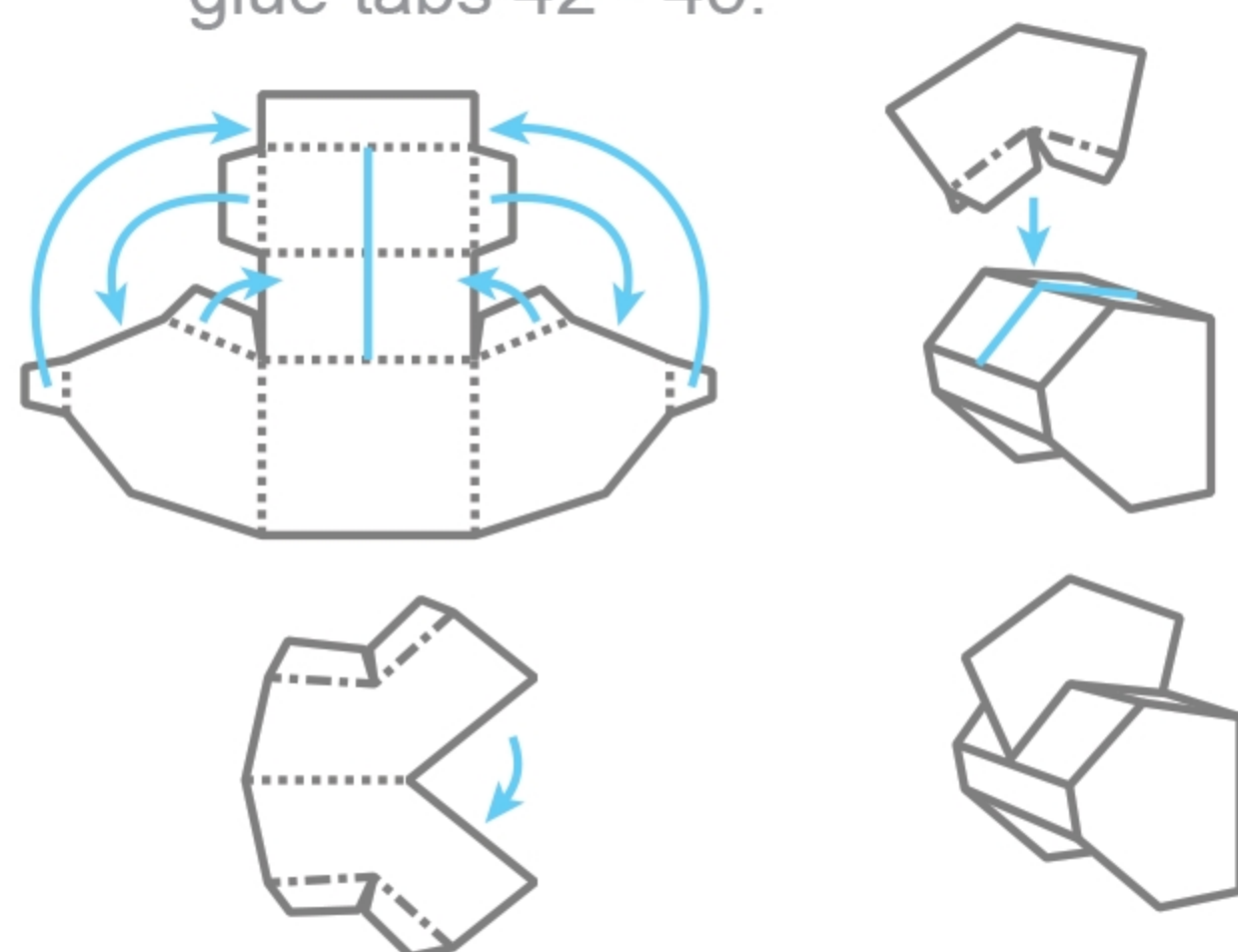
6

Fold HAIR and glue tabs 30 - 35.



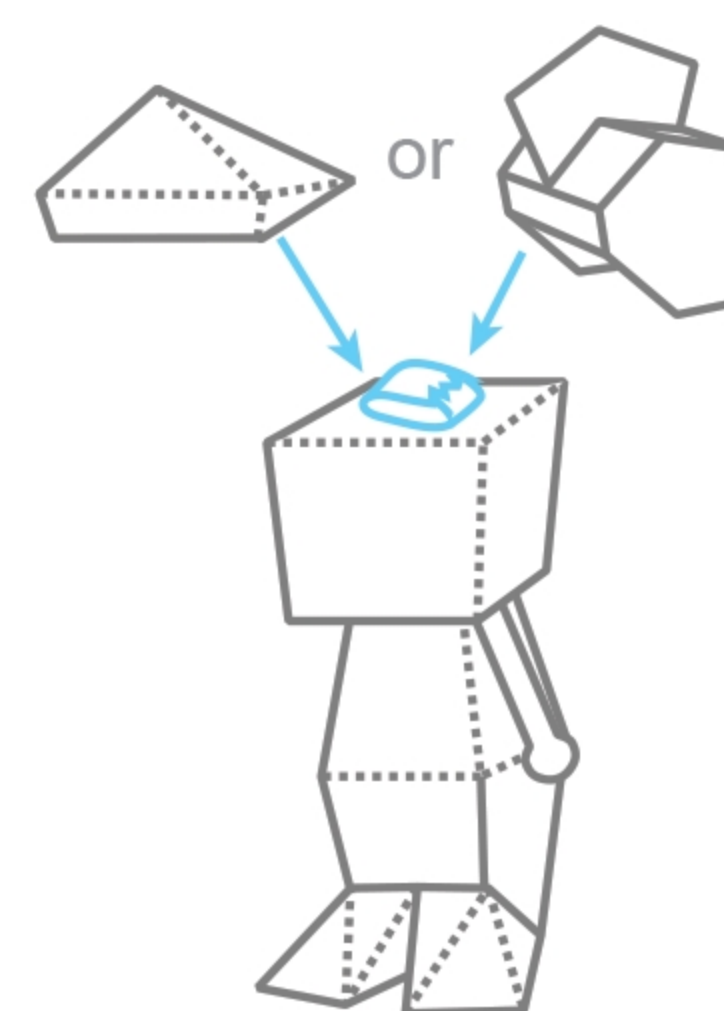
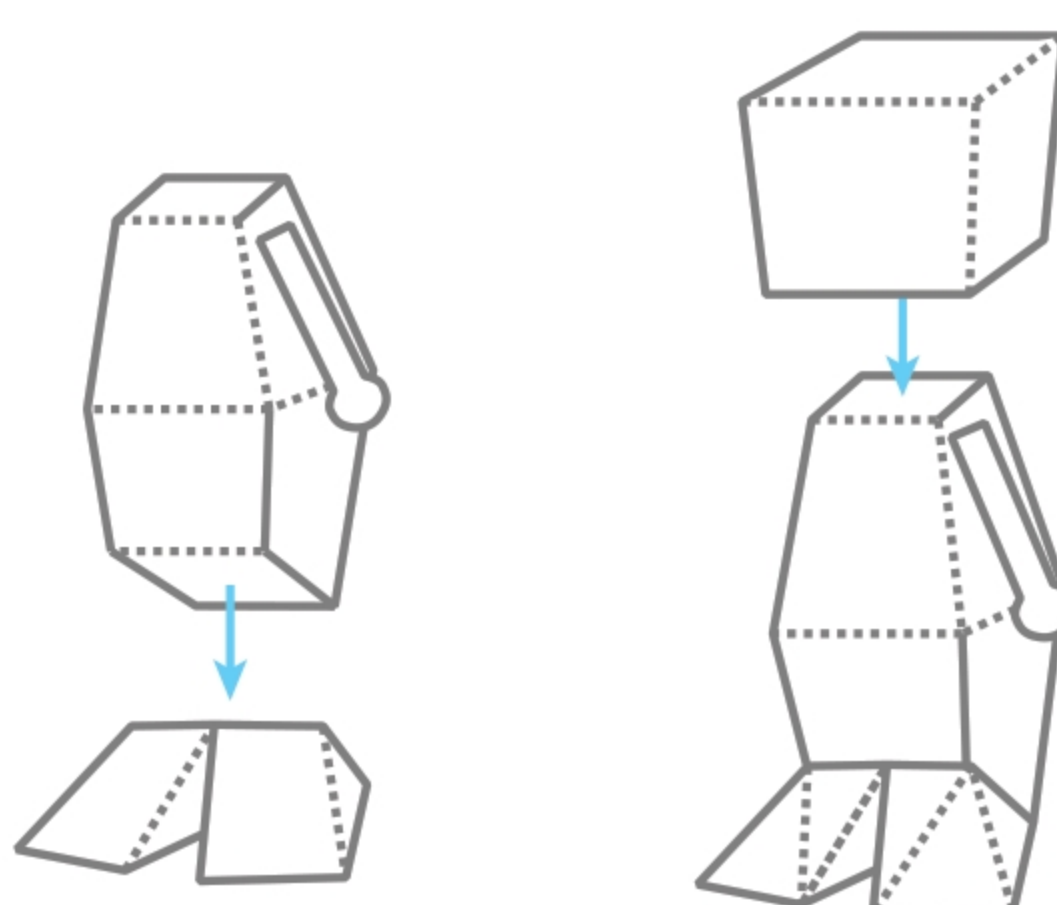
7

Cut solid line in HELMET. Fold and glue tabs 36 - 41. Fold CREST and glue two halves together but don't glue the tabs. Insert CREST into HELMET and glue tabs 42 - 45.



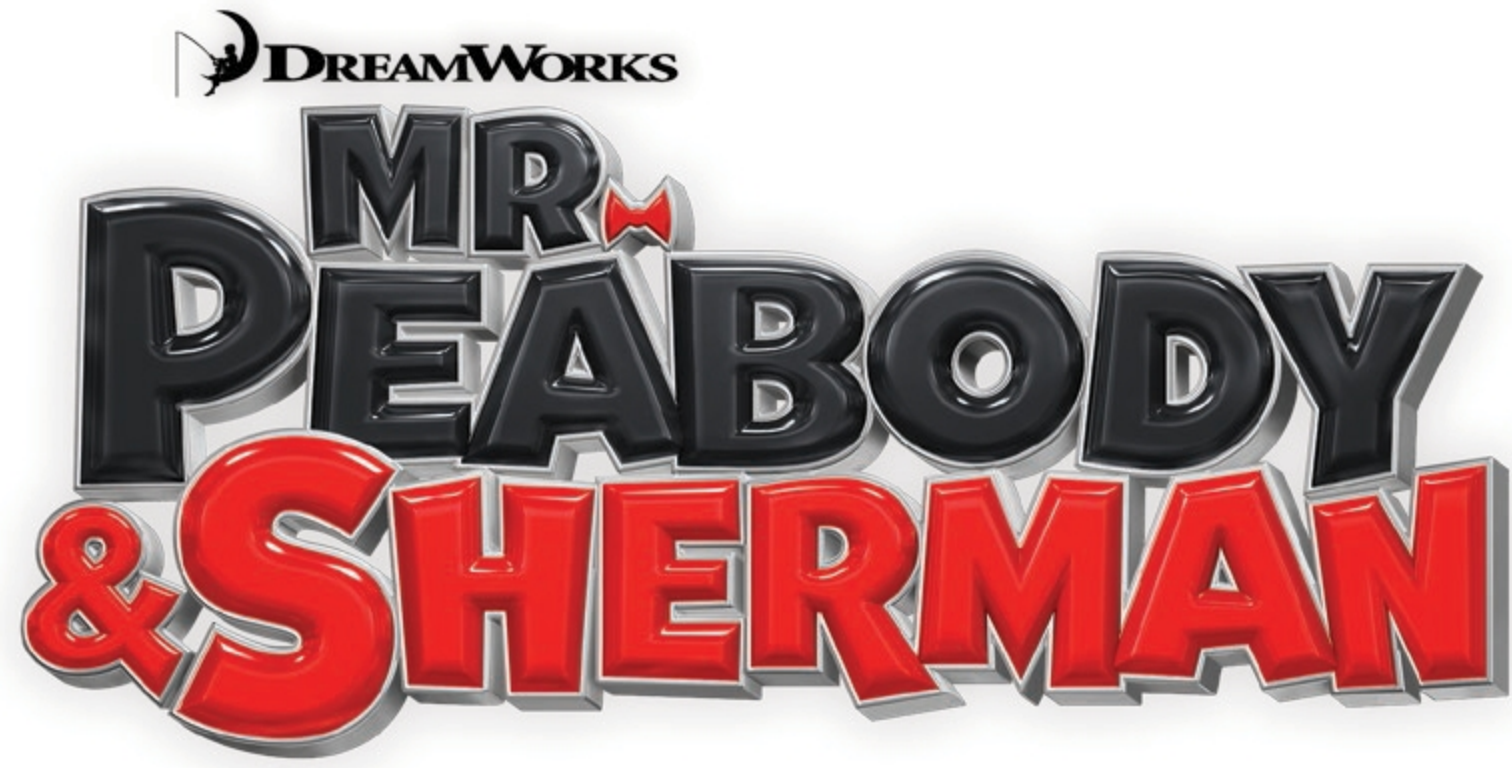
8

To put Sherman together, first glue FEET to BODY. Then glue HEAD onto BODY. Then tape hair or helmet on head. Use tape so you can switch between the two.



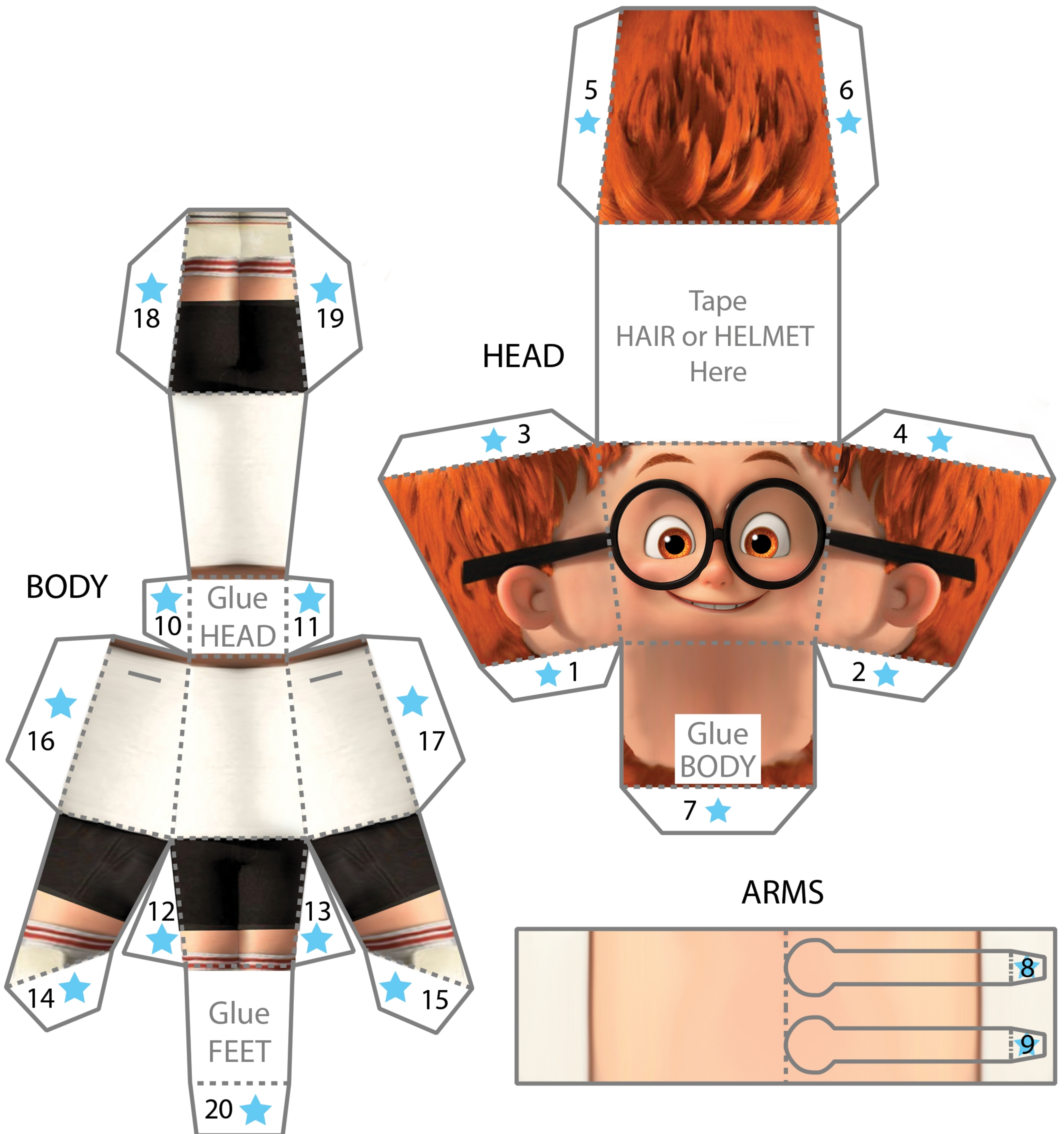
Sherman is now complete!  
Continue to make Mr. Peabody.



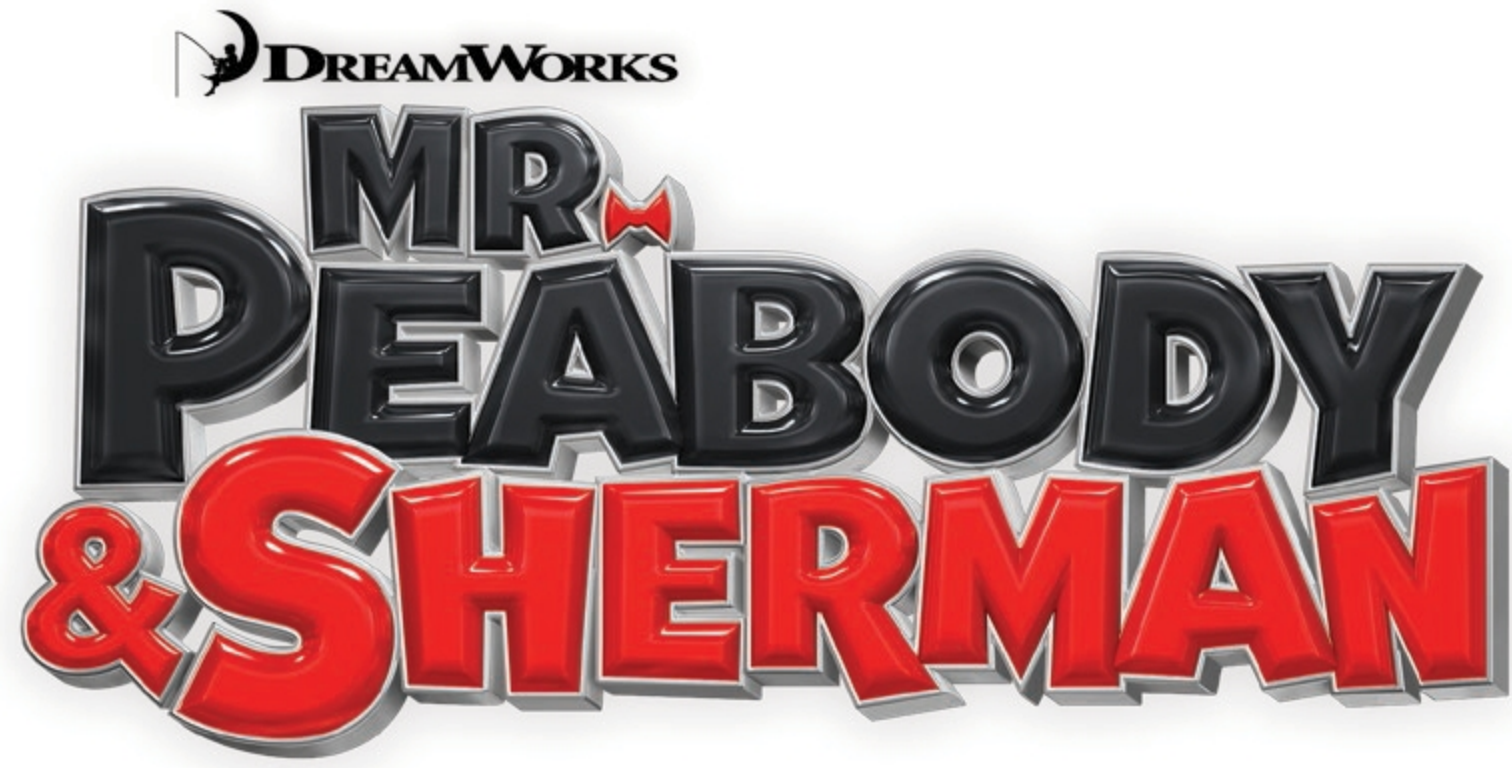


# 3D SHERMAN

## SHERMAN







# 3D SHERMAN

## SHERMAN

