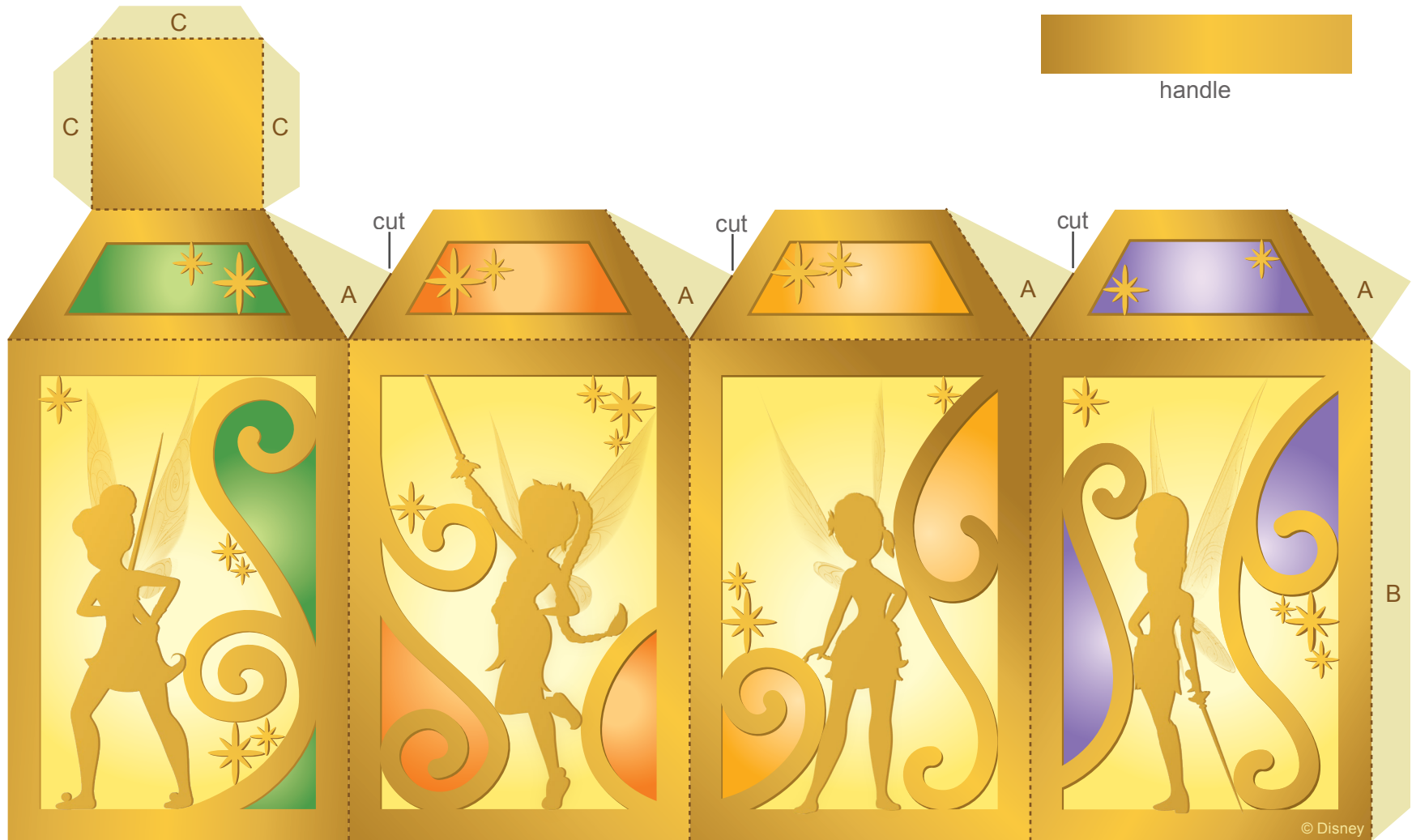


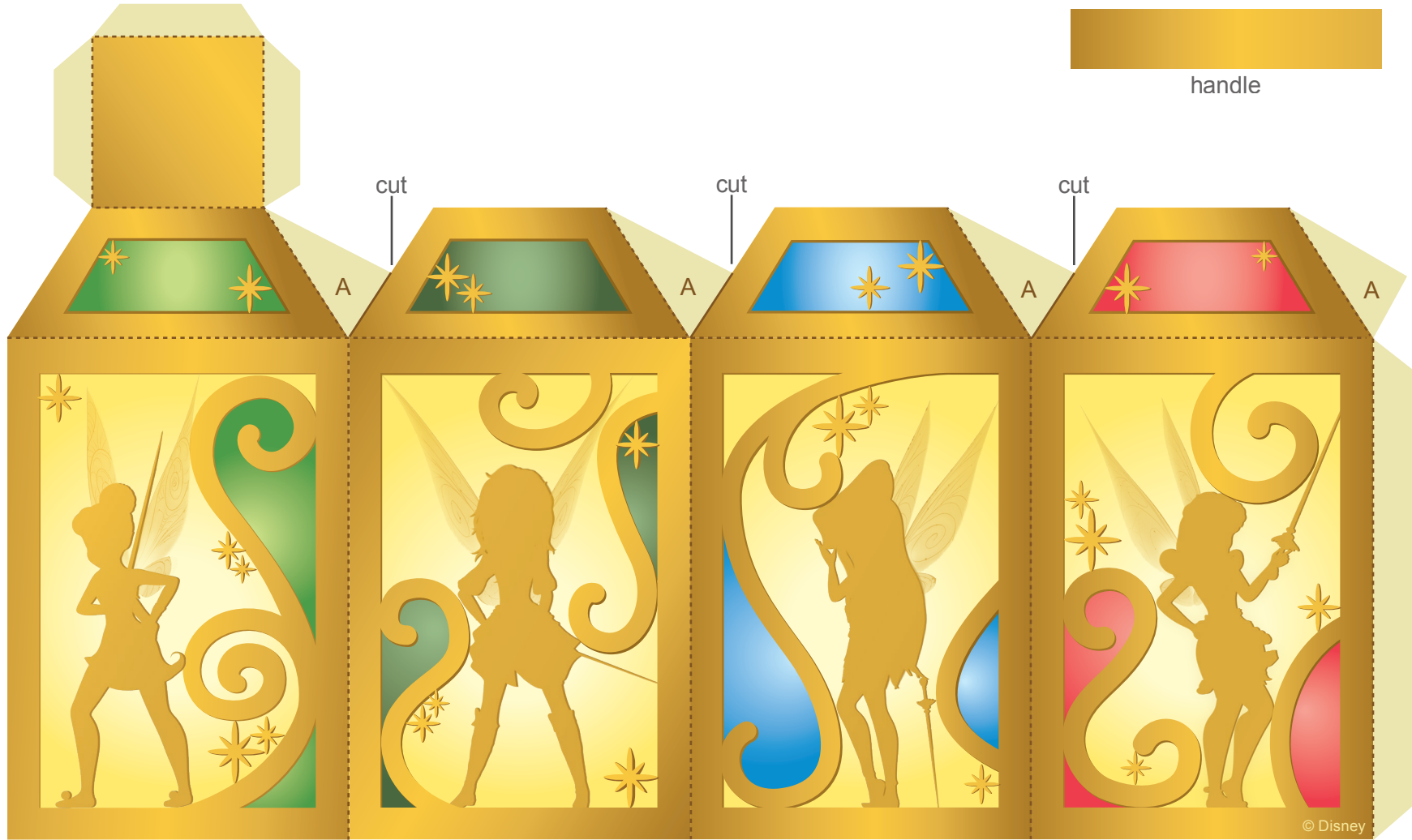


# Pirate Fairy Lanterns





# Pirate Fairy Lanterns





## Pirate Fairy Lanterns

### Instructions

1. Print and cut out as many lanterns as desired.
2. Make all folds along the dashed lines away from you. Cut along the solid brown lines at each top A tab.
3. Glue each A tab to the back of the corresponding lantern side.
4. Glue tab B to the back of the corresponding lantern side, closing the shape of the lantern.
5. Fold and glue each tab C to the underside of the lantern top, closing the top like a lid.
6. Cut a length of string, be sure to leave room at each end to tie up your string.
7. Spread glue or double-sided tape over the white side of the handle. Attach one end of the handle to the top of the lantern, loop it around your string, then attach the other end of the handle to the top of the lantern, pressing firmly so the handle sticks to the string.

