

Beauty and the Beast

Start Here

Give 1
Enchantment
to Another
Player

Chip



Rose

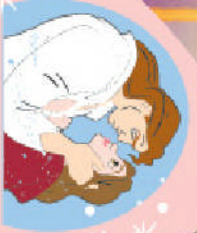


Roll
Again

Lumiere



Prince



Prin



Bea



Disney
PRESENTS

and the Beast



Take 1
Enchantment
from the
Board



Mrs. Potts



Cogsworth



Lumiere

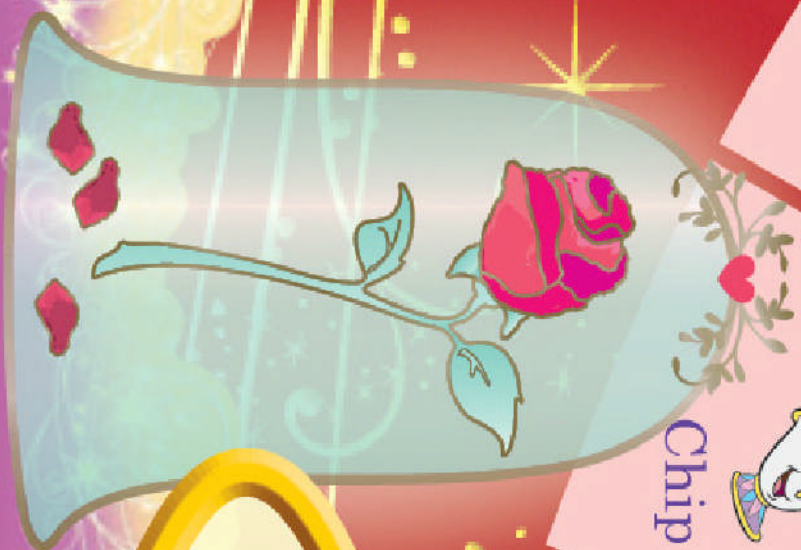




Cogsworth



Chip



Roll
Again

Lumiere



Chip

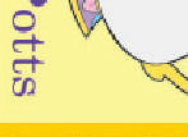


Mrs. P



Belle's

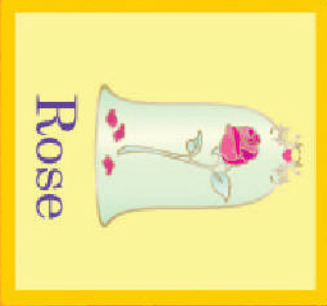




Mrs. Potts

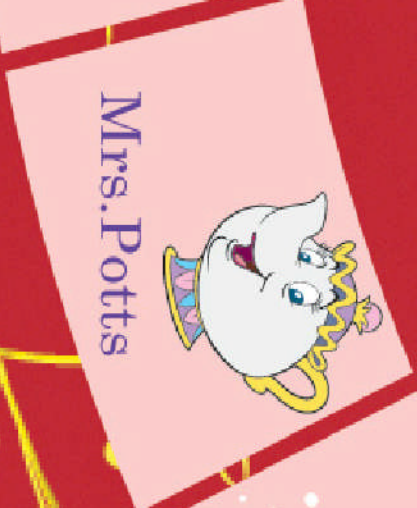


Cogsworth



Rose

Take 1
Enchantment
from the
Board

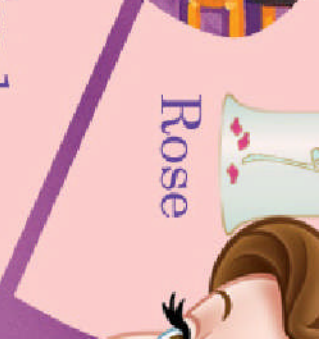


Mrs. Potts



Prince

Give 1
Enchantment
to Another
Player



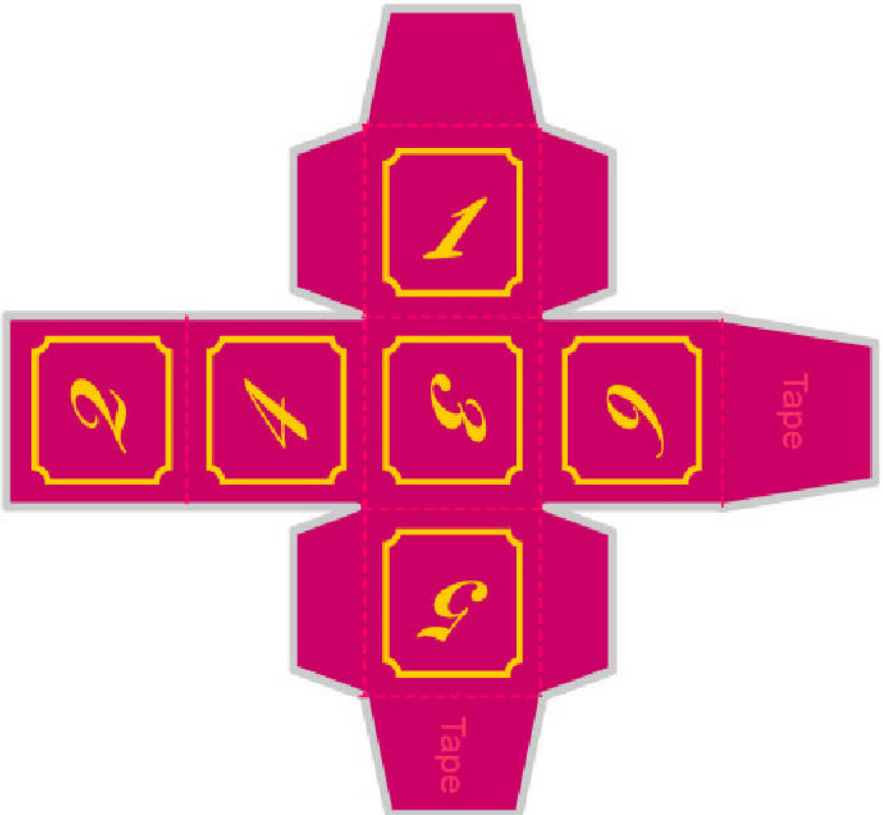
Rose

The Ball



Cut

Fold



Beast



Prince



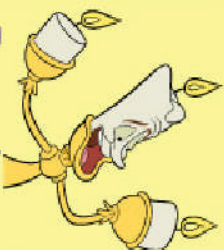
Chip



Mrs. Potts



Cogsworth



Lumiere



Rose



Chip



Mrs. Potts



Cogsworth



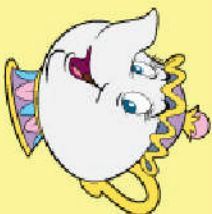
Lumiere



Rose



Chip



Mrs. Potts



Cogsworth



Lumiere



Rose



Chip



Mrs. Potts



Cogsworth



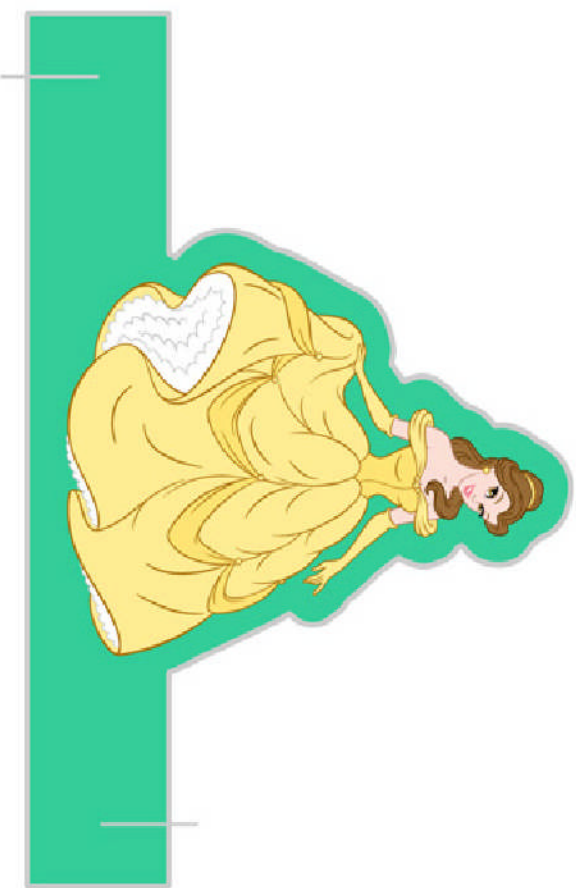
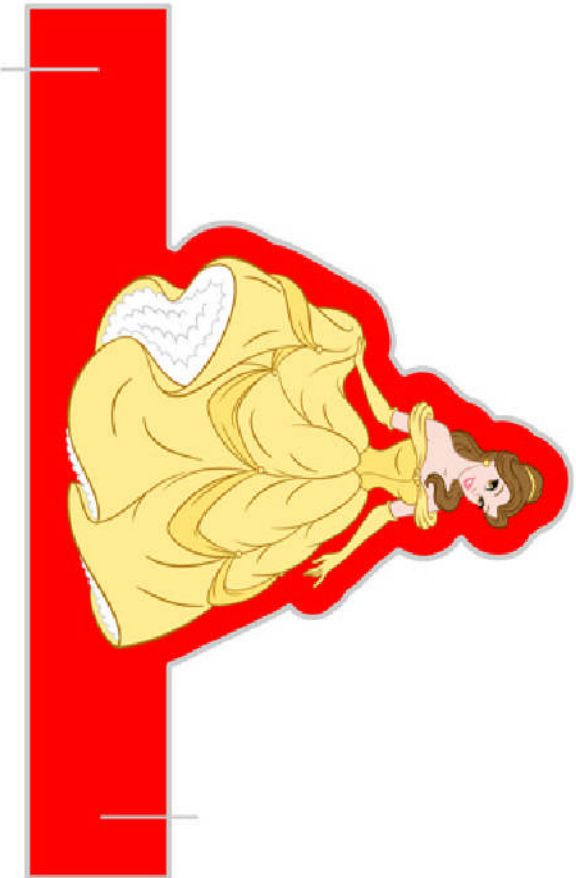
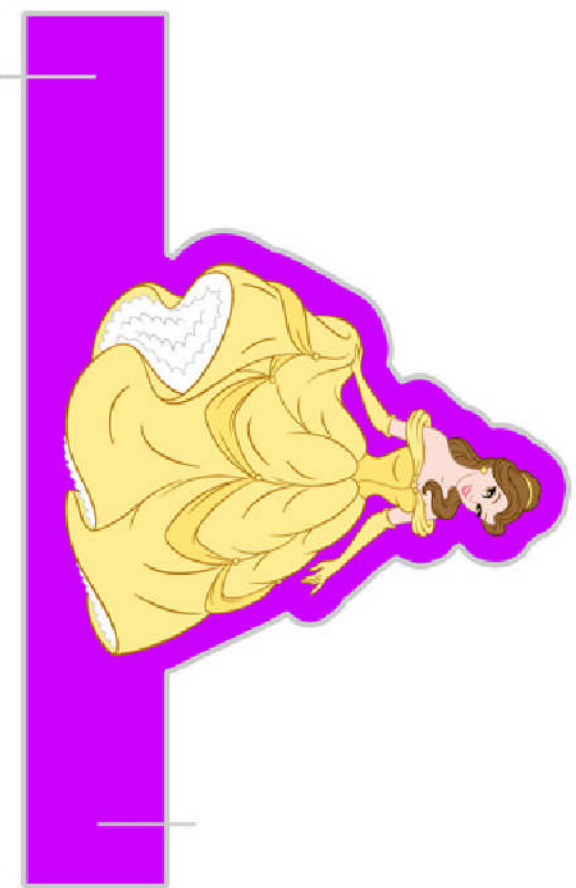
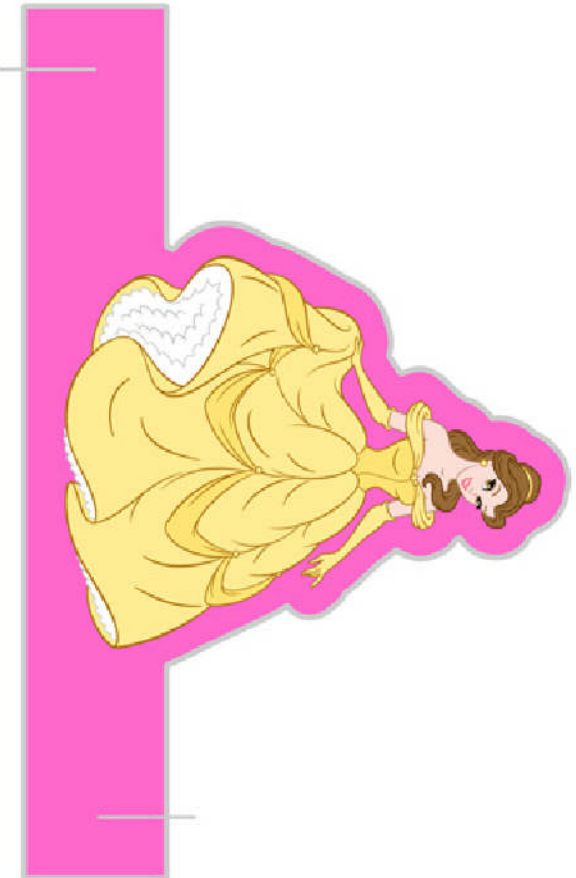
Lumiere



Rose

Cut ———
Fold - - - - -

Cut along gray lines and make a half cut on the sides of the color bar where indicated.
Loop around and interlock the tabs in the back. Tape tabs down if you like.



Game Rules

Belle of the Ball

Contents Game Board, Die, 4 Play Pieces, 22 Enchantment Cards

Object Be first to collect all 5 Enchantments and the Belle and Prince Card.

Set Up

- Assemble the 4 sections of the Game Board and place it in the center of the table.
- Cut out all of the other components. Assemble the die and 4 Play Pieces.
- Put the Enchantment cards on their spaces in the middle of the game board, face up.
- Everybody choose a play piece and place it on the Start space on the game board.

Play

Take turns. On your turn, roll the die. Move your play piece in a clockwise direction around the spaces on the path indicated by the number you rolled.

If you land on a space that is occupied by another player, you may advance to the next unoccupied space.

If you land on a space that shows an Enchantment, you may collect one of them from the piles in the middle of the game board.

If you land on a space that shows the Beast, you must take that card, either from the game board, or from the player who has it.

There is only one Beast card and you can't win if you are the one holding it. Don't worry – it gets passed between players during the game.

If you land on a space that shows the Prince and Belle card, you must take it, either from the game board, or from the player who has it.

There is only one Prince and Belle card, and you need it to win!

If you land on a space with any other special directions, follow them.

Then it's the next player's turn.

Winning If you're the first player to collect all 5 Enchantments, and the Prince and Belle card, but NOT be in possession of the Beast card, you win!

