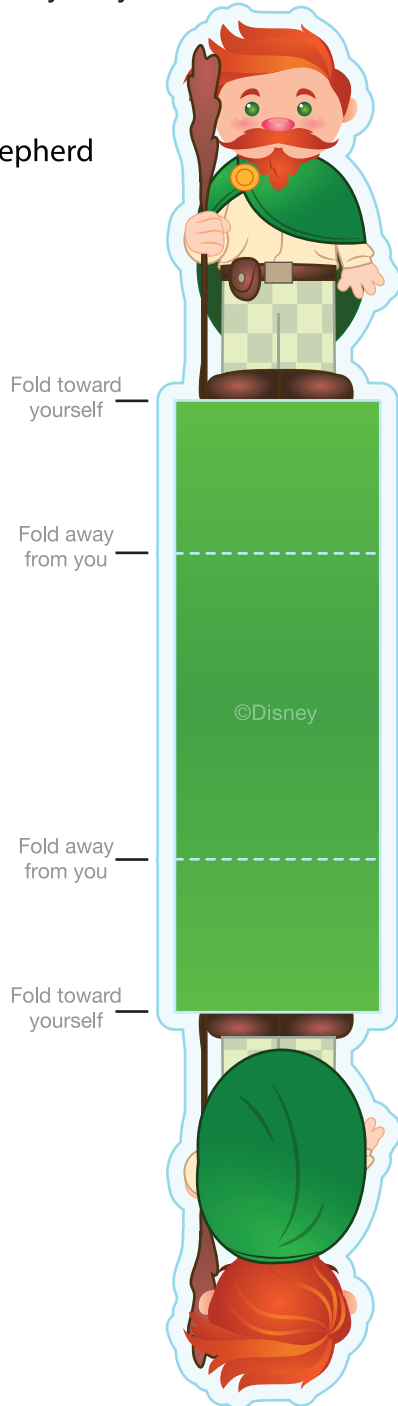
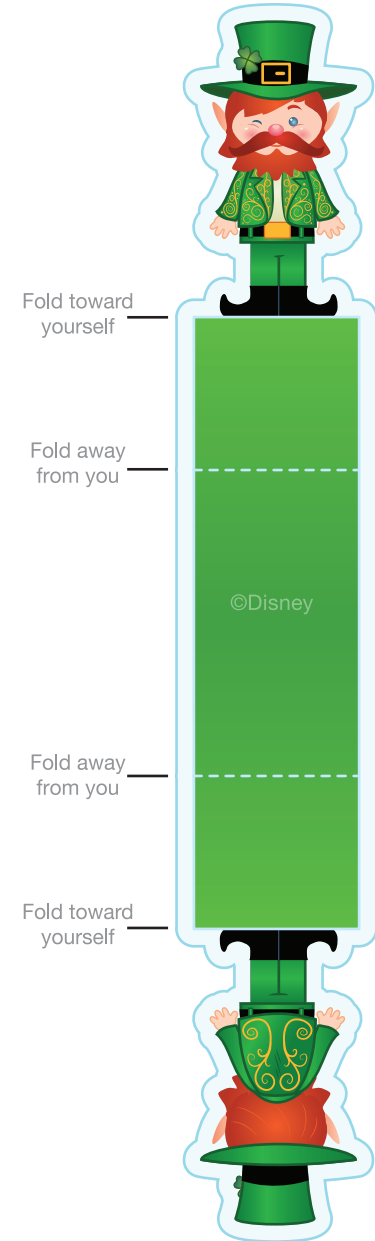
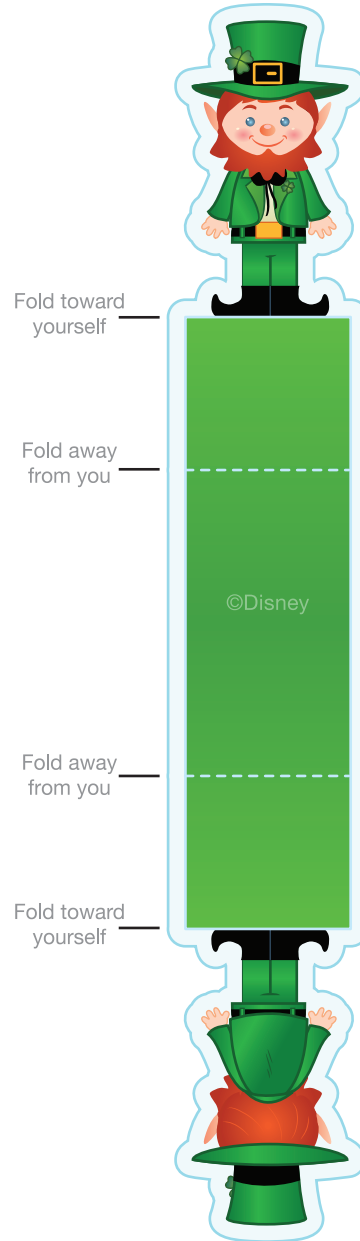
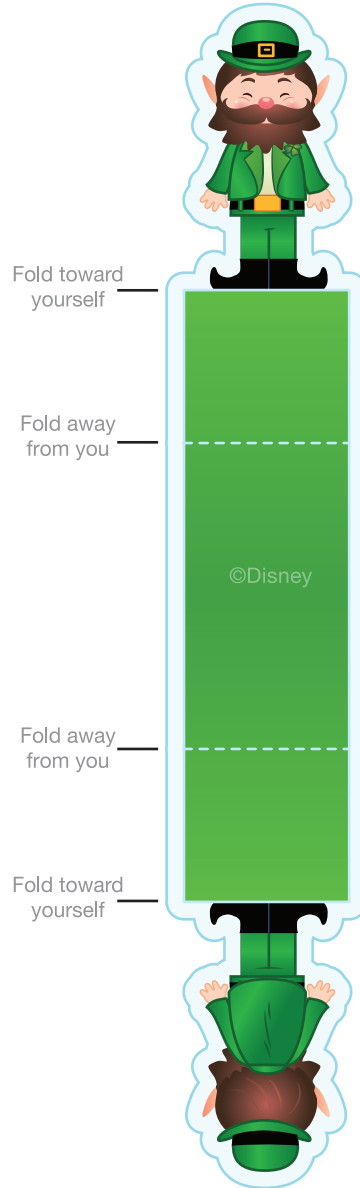


St. Patrick's Day Playset

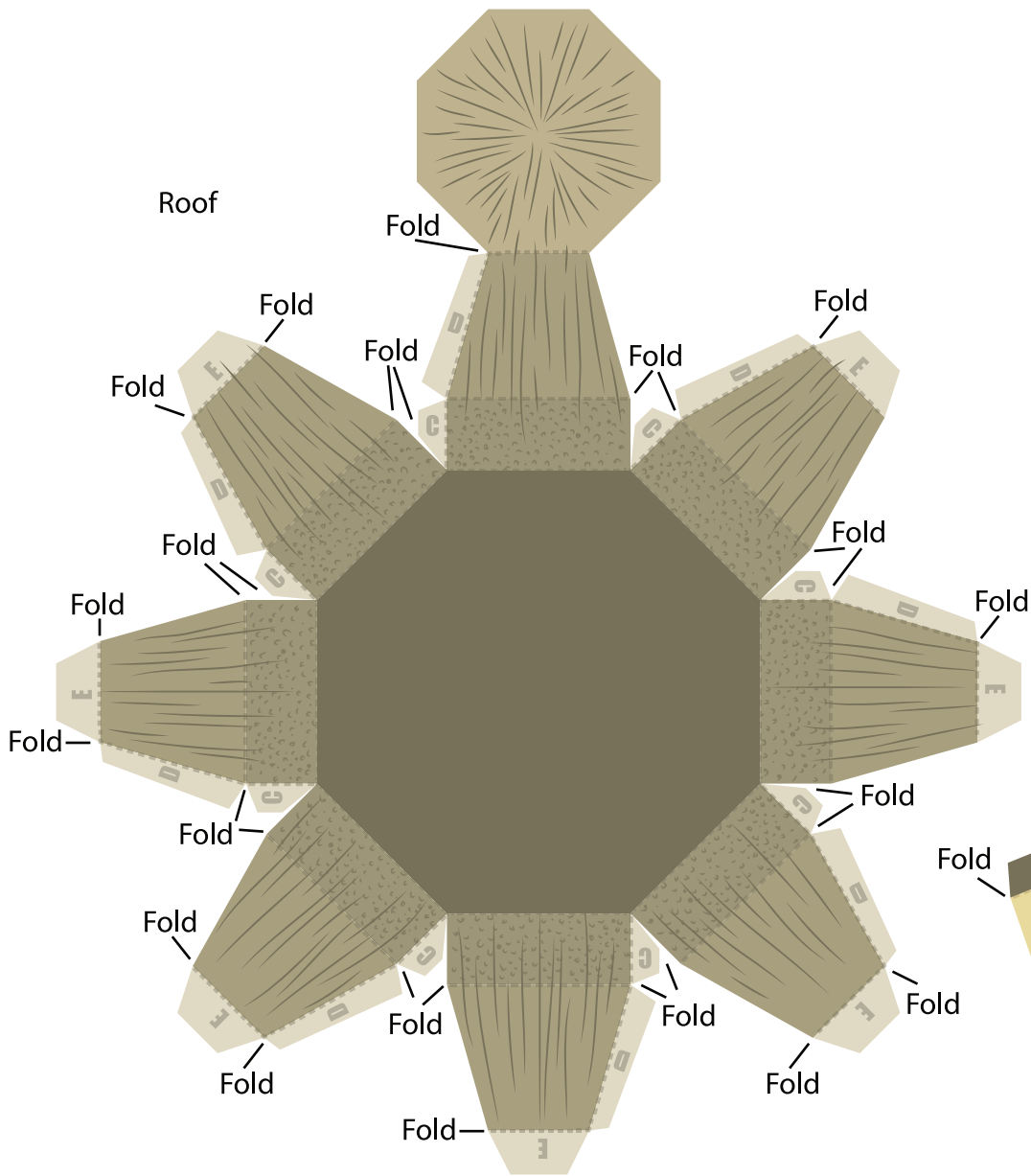
Shepherd



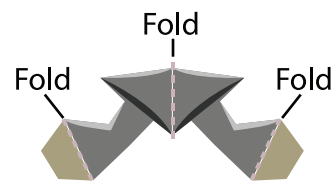
Leprechauns



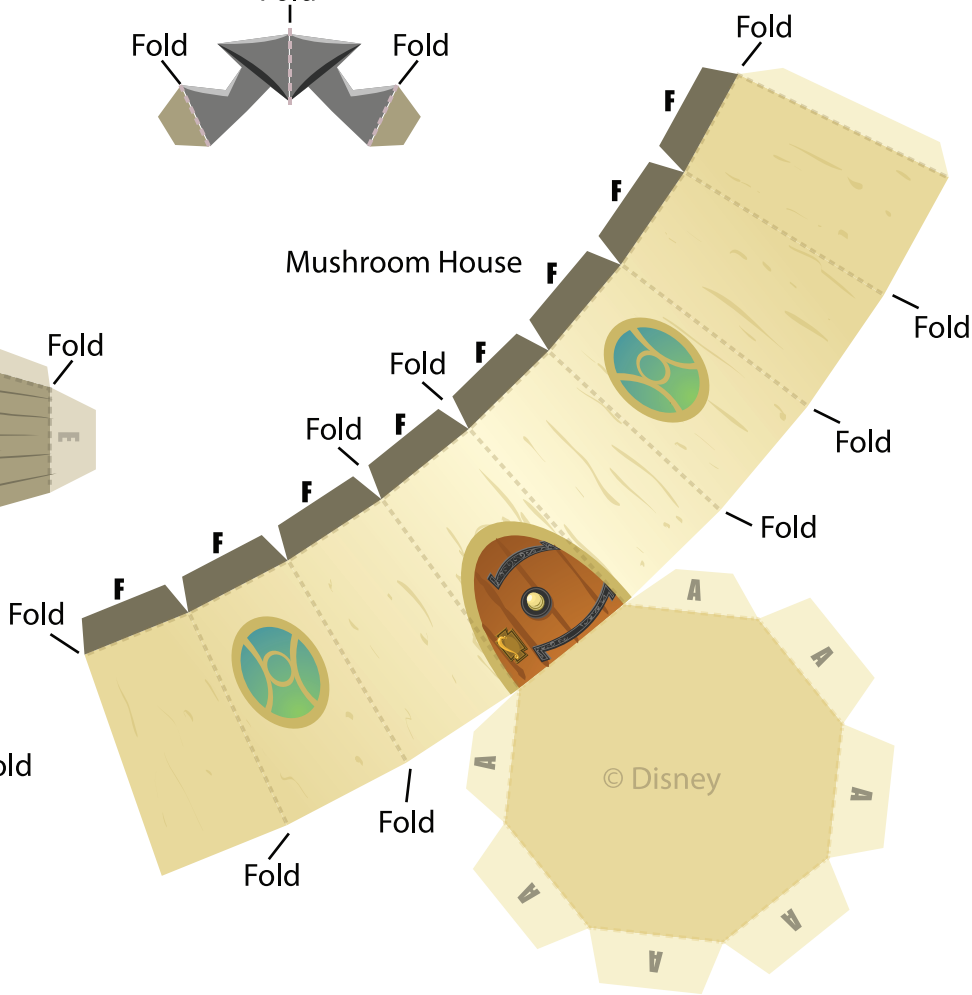
St. Patrick's Day Playset



Chimney

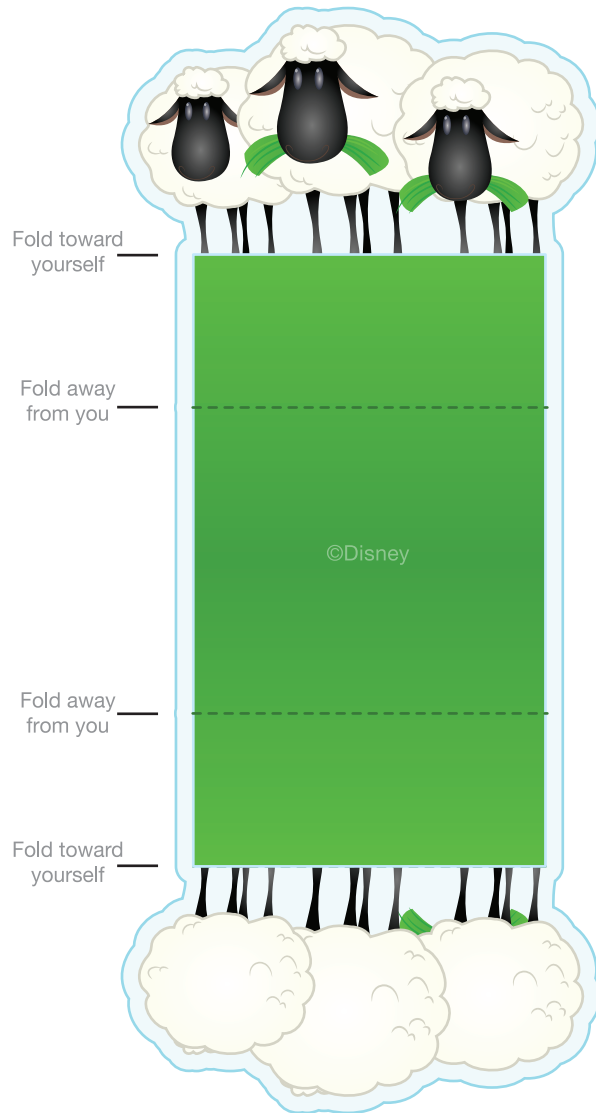


Mushroom House

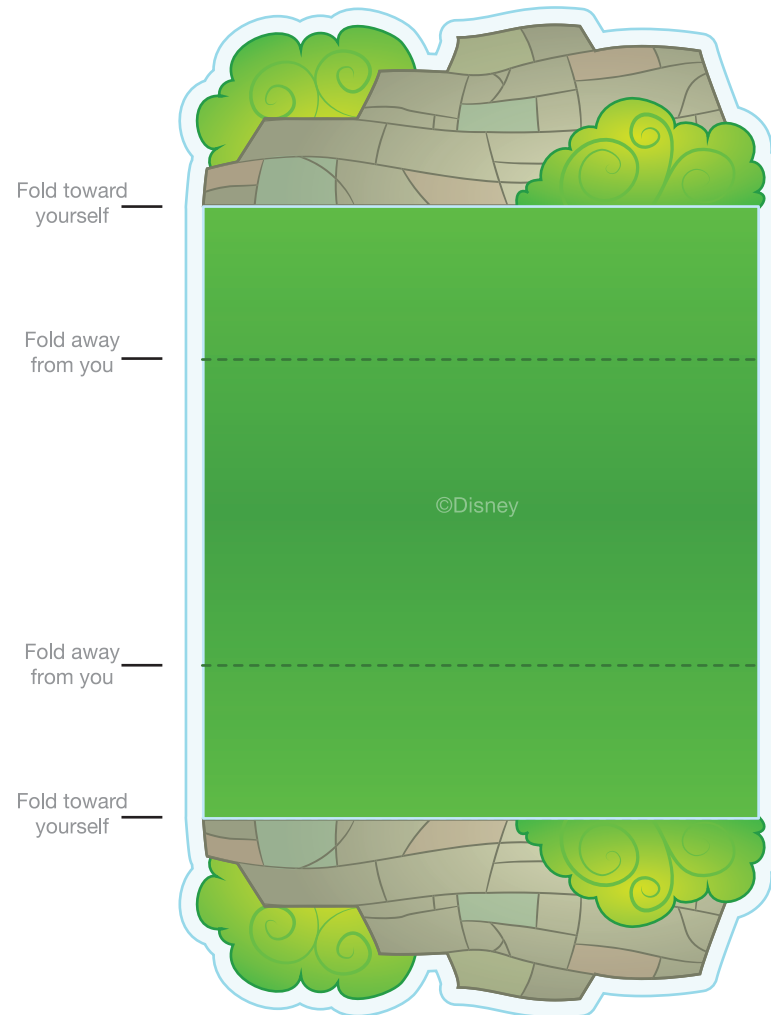


St. Patrick's Day Playset

Sheep



Stone Wall



St. Patrick's Day Playset

1. Print the template on regular paper or cardstock and cut out the pieces.
2. For the shepherd, leprechauns, sheep, and stone wall, fold the dashed lines away from you. Fold the solid lines at the bottom of the piece toward you. When all folds have been made, secure the front and back of the piece together using glue or double-sided tape. You should find that you've created a stand for the piece. Repeat this step with the remaining characters and props.
3. For the mushroom house, make all folds along dashed lines, then secure the A tabs to their corresponding pieces. Close the shape with the B tab.
4. For the roof of the mushroom house, make all folds along dashed lines, then secure all tabs in alphabetical order, starting with the C tabs. Close the shape of the roof with the E tabs.
5. Secure the roof to the mushroom house using the F tabs at the top of the house.
6. Fold the chimney in half and secure so the design is two-sided. Butterfly the tabs outward and use them to attach the chimney to the roof.