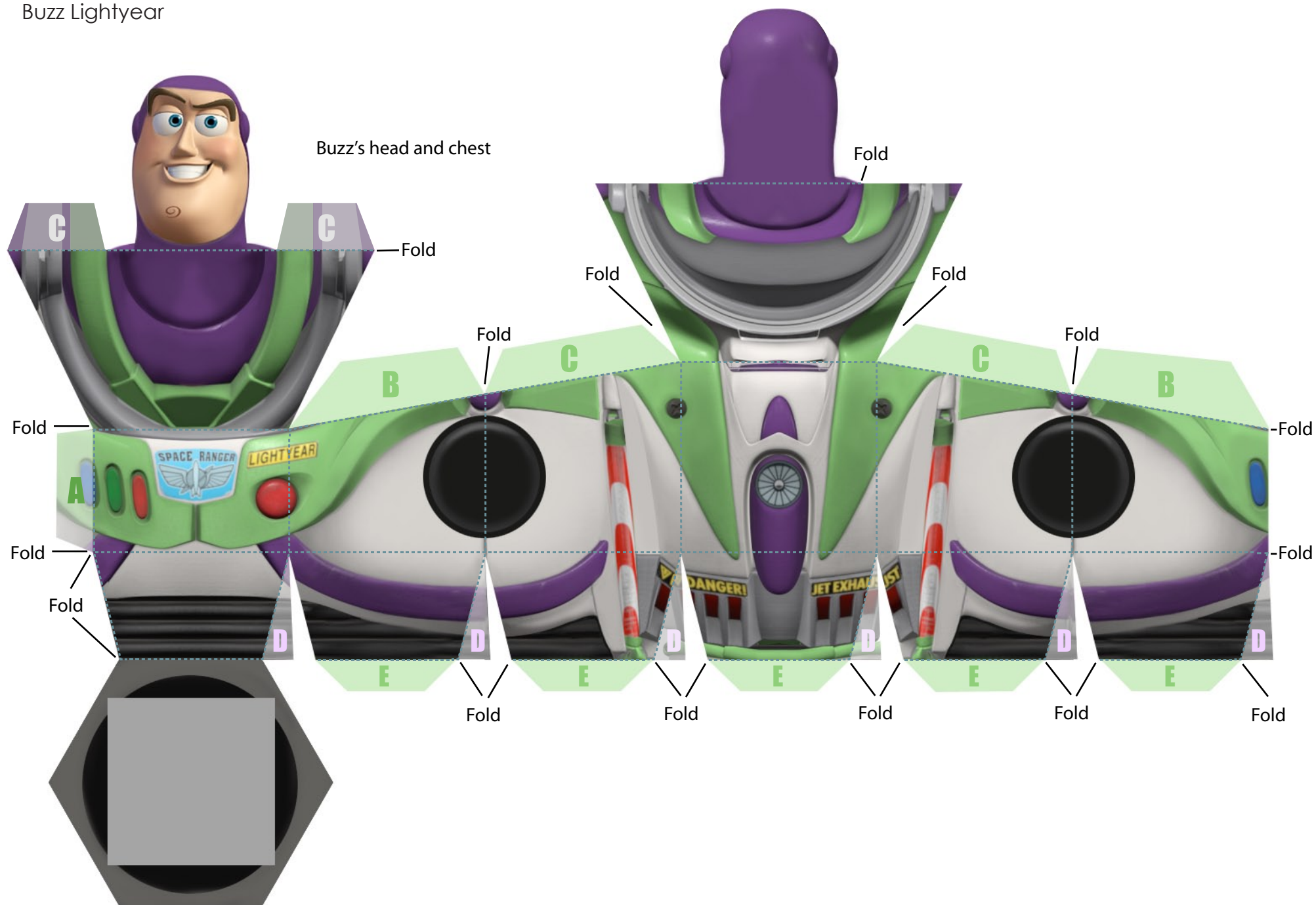
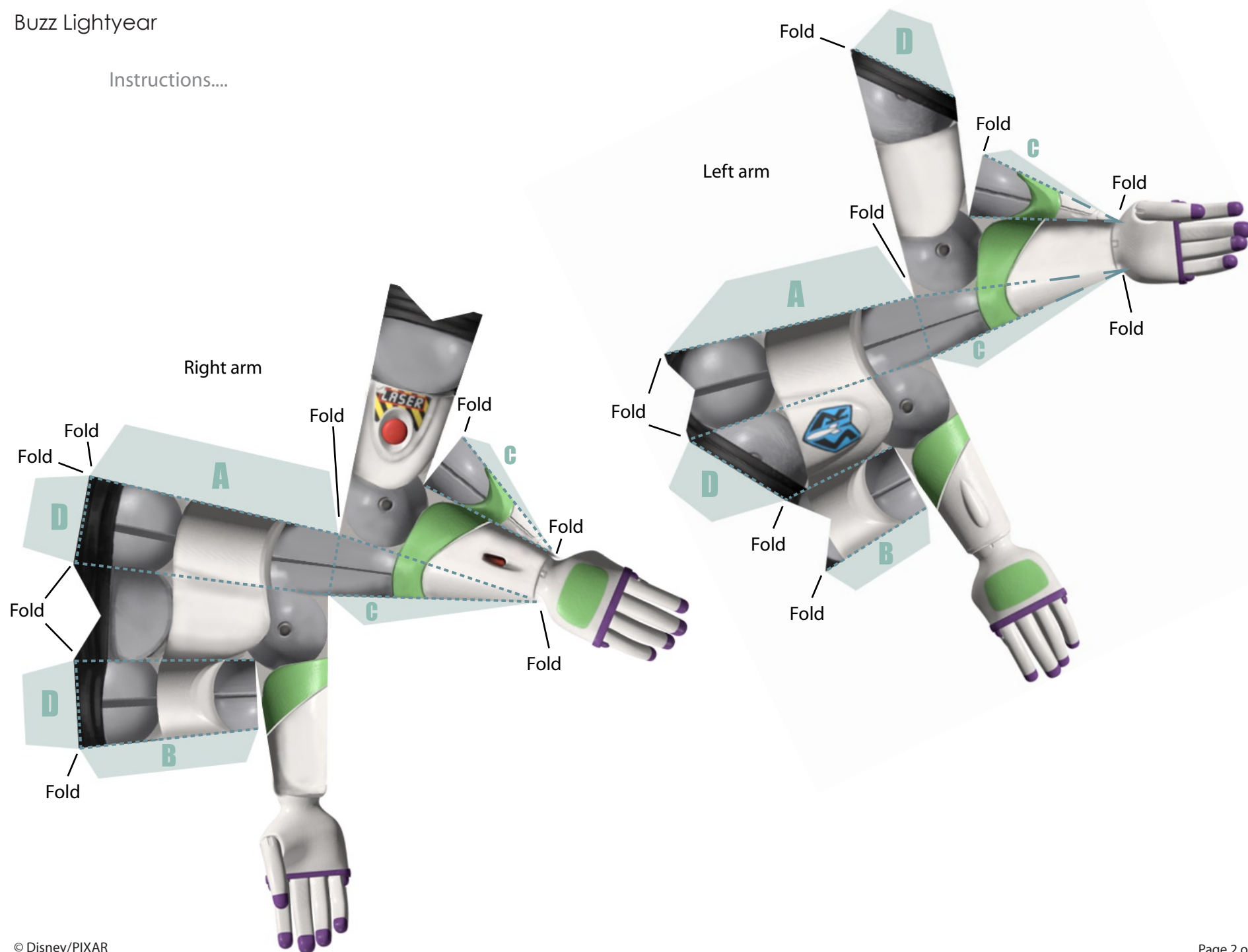


Buzz Lightyear



Buzz Lightyear

Instructions....





Buzz Lightyear: Instructions

Head and Chest

With the design facing you, make all of the folds away from you except Buzz's face and the back of his head. Fold those towards you. Create his chest cavity by gluing the A tab to the opposite end of his chest. Next, glue the front part of Buzz's shoulders to the B tabs. Spread glue on the C tabs and the white side of the back of Buzz's head, glue the back of his shoulders down, and glue his head together so the design is now two-sided. Glue each D tab to the back side of the design next to it to create his waist. Spread glue on the E tabs, fold over the bottom flap, and glue it into place to close the chest.

Pelvis

With the design facing you, make all of the folds away from you. Glue the A tabs and B tabs to the inside of the pelvis. To attach Buzz's head and chest to his pelvis, spread glue on the top of Buzz's pelvis and line it up with the square on the bottom of Buzz's chest.

Legs

With the design facing you, make all of the folds away from you. Start by gluing the A tab and then the B tab to create Buzz's thigh. Then spread glue on the C tabs and glue them to the inside of the leg to create his shin. Finally, glue the D tab to close the shin. Make sure Buzz's toes stick out past the rest of his leg. Repeat these steps for his other leg. To fit his legs to his pelvis, spread glue on the front and sides of flaps that hang down off his pelvis. Slip the flaps into the tops of Buzz's legs. The Disney/Pixar copyright should be on his rear end. You may need to use a pen or pencil to push the tabs into place from the bottom of his legs.

Arms

With the design facing you, make all of the folds away from you. Glue the A tab to the inside of the piece perpendicular to it. This creates the 90-degree bend to Buzz's arm. Close the shoulder part of his arm by gluing the B tab. Spread glue on the C tabs and the inside of Buzz's hand. Close the forearm by gluing the tabs and hand together. Repeat these steps for his other arm. Leave the D tabs for now. You will use these to attach Buzz's arms to his body. To attach Buzz's arms, spread glue on the D tabs and glue them into place over the circles on the side of Buzz's chest.