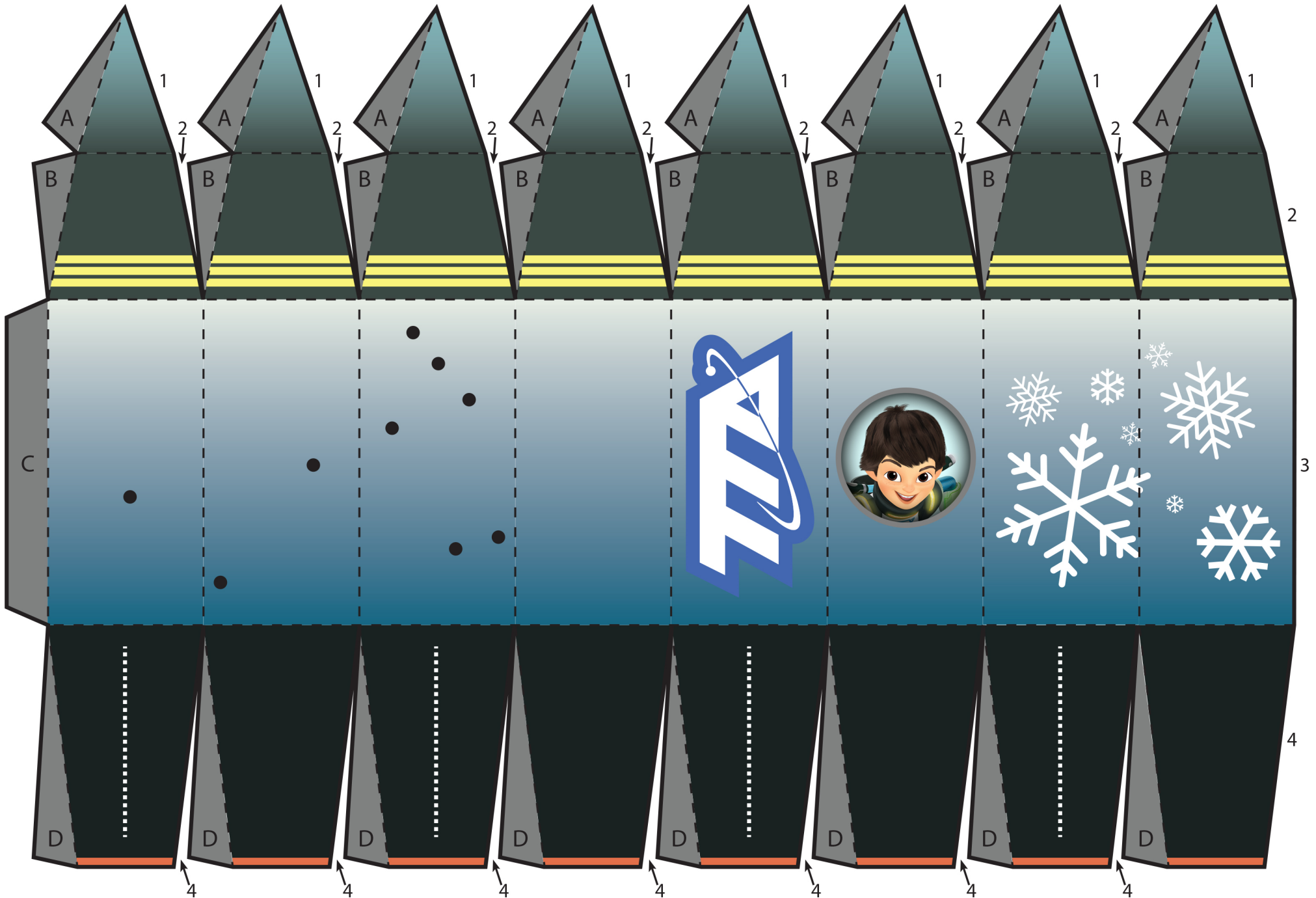
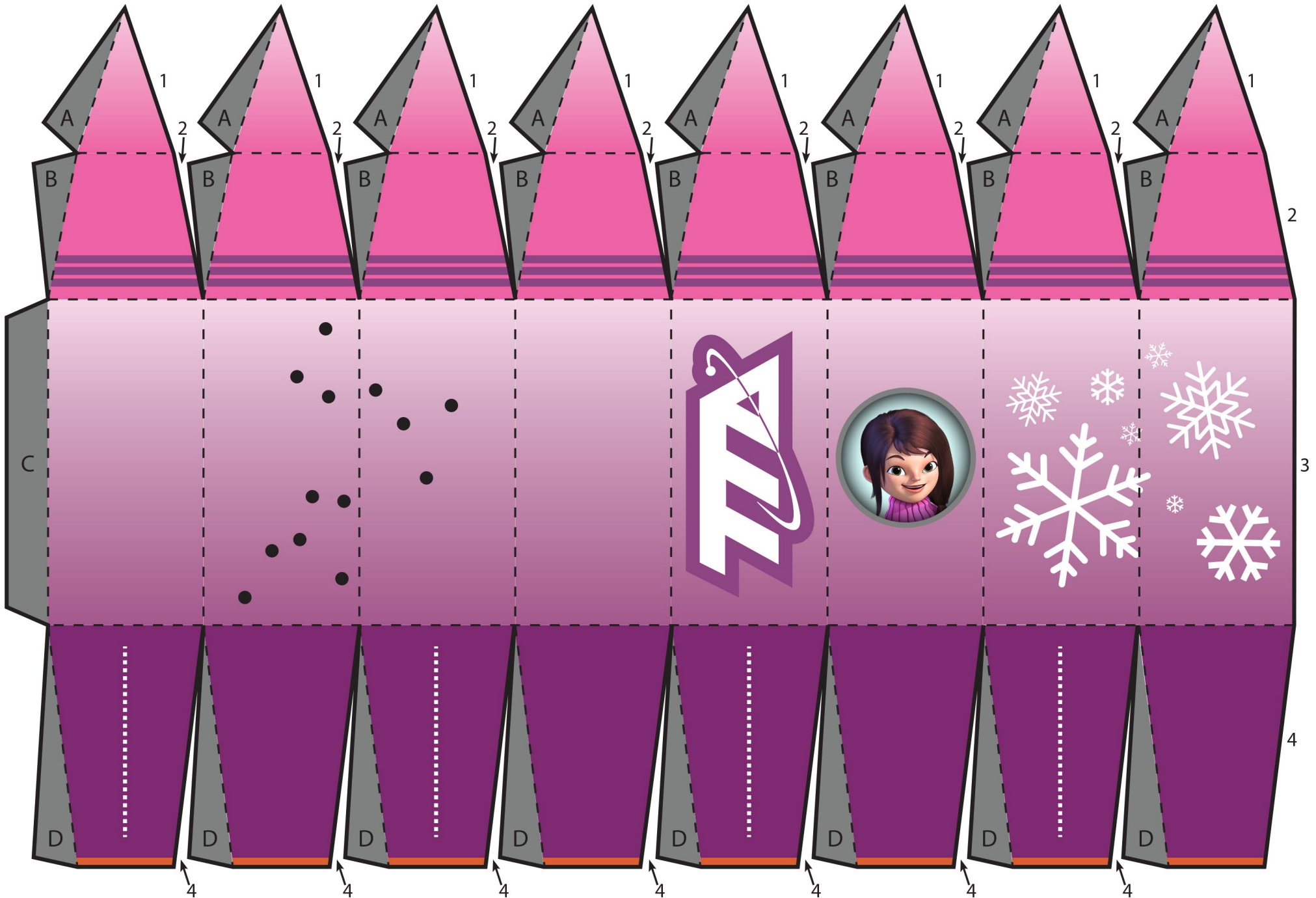


# Miles' Space-tastic Night Light: Monocerus Constellation

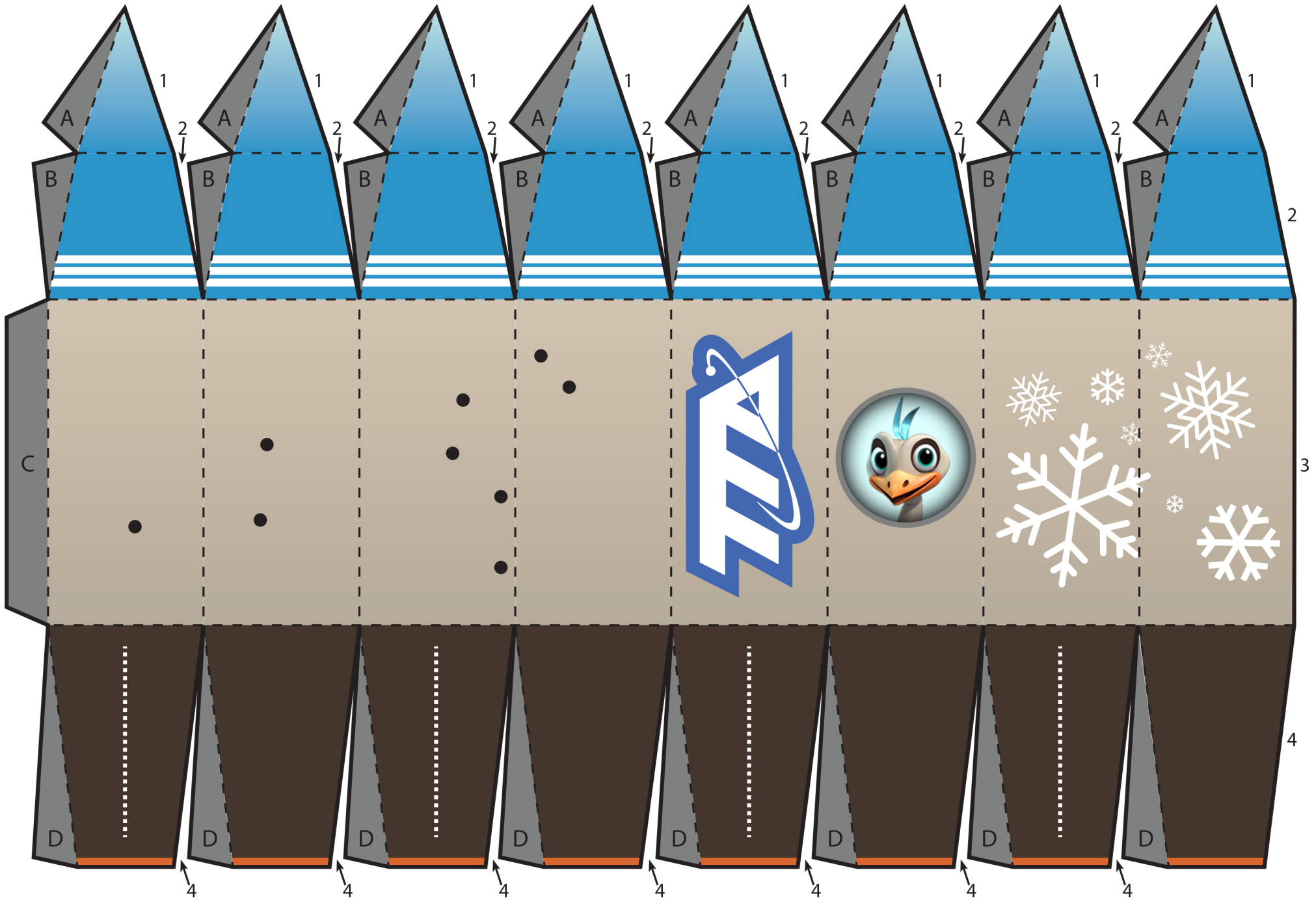


# Miles' Space-tastic Night Light: Canus Major Constellation



# Miles' Space-tastic Night Light:

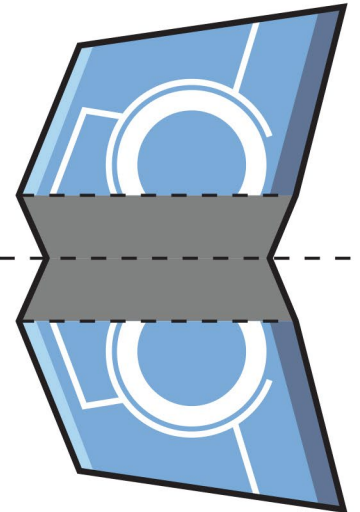
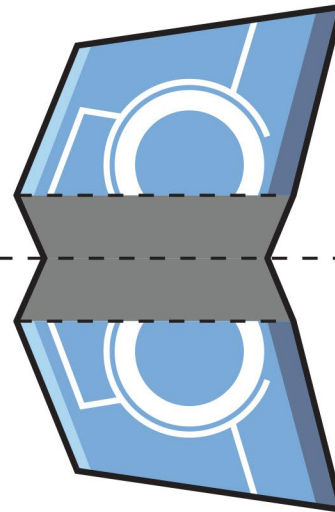
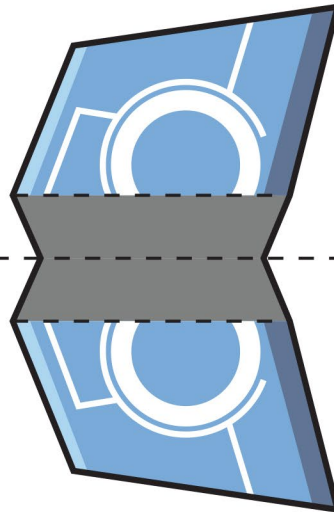
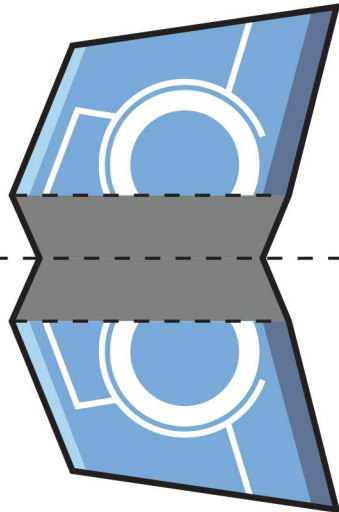
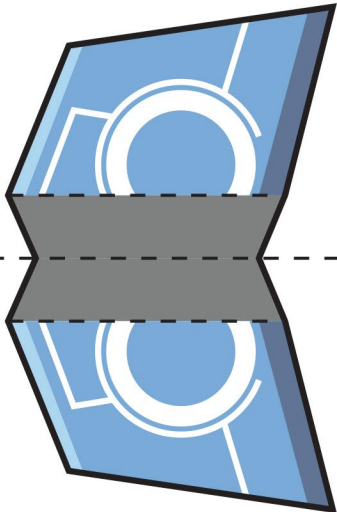
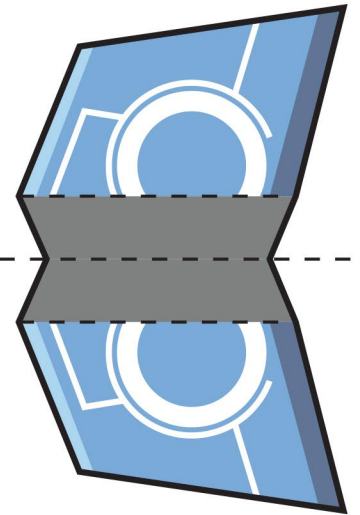
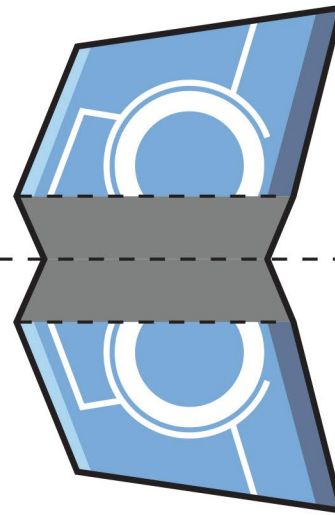
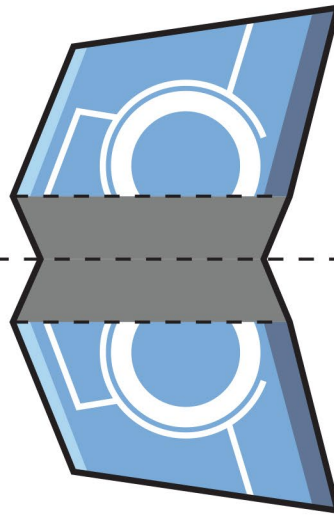
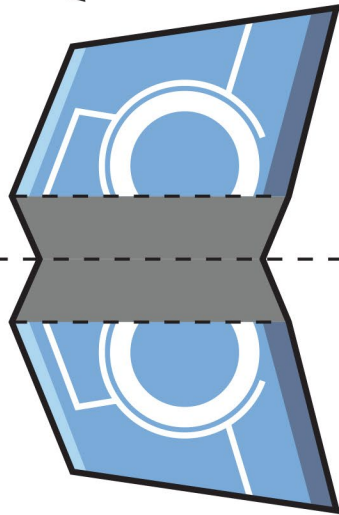
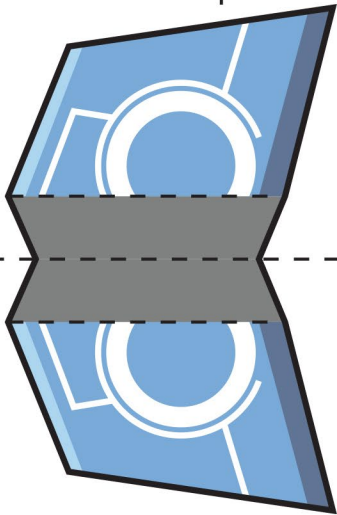
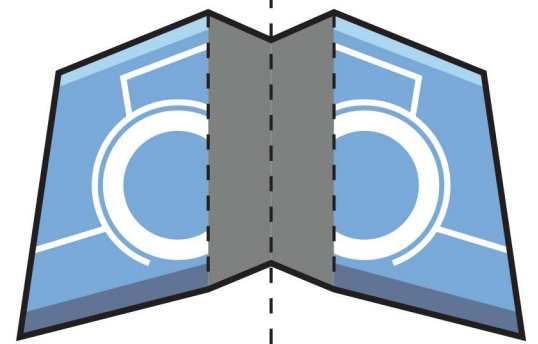
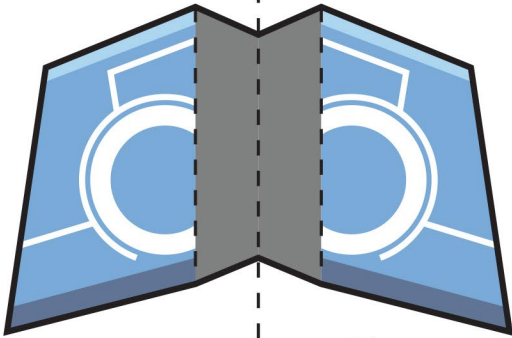
## Leo Constellation





# Miles' Space-tastic Night Light:

## Base Wings



# Miles' Space-tastic Night Light:

## Instructions

### REMINDER

Cutting is intended only for grown-ups.

### WHAT YOU'LL NEED

- 8 ½" x 11" cardstock
- Scissors
- Toothpick
- Glue stick
- Battery-operated tea light



### HOW TO MAKE IT

1. Have a grown-up cut out all pieces along the solid black lines and fold along all black dashed lines.
2. Use a toothpick to punch holes through solid black dots.
3. Have a grown-up cut vertical slits along the dotted white lines along the base of the ship.
4. Fold Base Wings in half along dotted line and glue backsides together.
5. Glue A Tabs to the underside of 1, glue B Tabs to the underside of 2, glue Tab C to the underside of 3, and glue D Tabs to the underside of 4.
6. Insert the grey portions of the Base Wings into the previously cut slits on the base of the ship.
7. Place a battery-operated tea light underneath the completed ship to see the constellations on the sides of the ship glow.