



## REMINDERS

- Only a grown-up should do any cutting.

## WHAT YOU'LL NEED

- 8 ½" x 11" cardstock (we recommend 110-pound paper for best results)
- Scissors
- Cutting knife
- Ruler
- Glue
- One-hole punch
- 9 pieces of string in varying lengths (9 to 18 inches each) – these are for the stars and planets; you choose which string goes with which piece
- 12-inch embroidery hoop
- Toothpick
- 24 inches of string
- Screw-in metal hook



DisneyJunior.com  
© Disney





## HOW TO MAKE IT

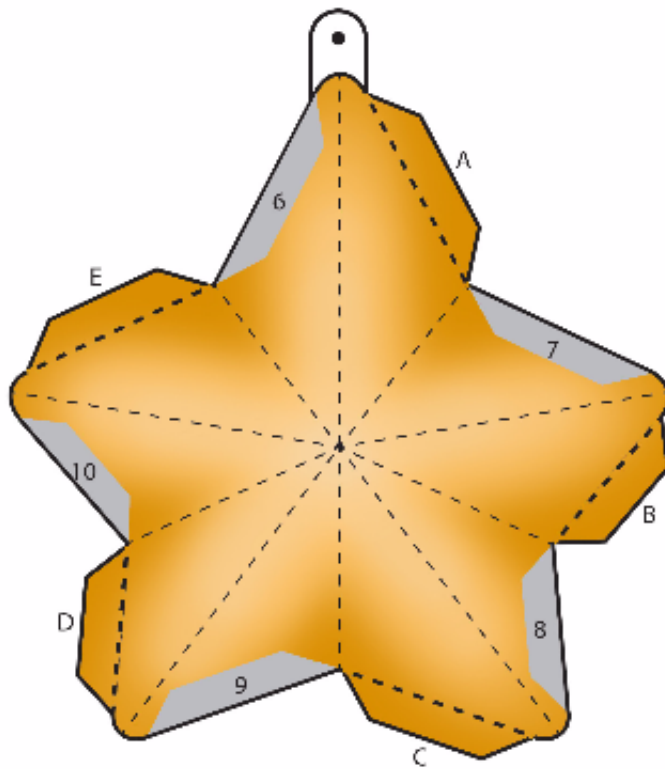
1. Print the following pages, printing out 6 copies of the stars, and have a grown-up cut out the pieces. Be sure to cut carefully along the green lines on the Planets, making sure not to cut off the attached C and E tabs.
2. To assemble the Stars, score lightly along all the dashed lines with a cutting knife. Use a ruler to ensure edges are straight. Glue A to 1, B to 2, C to 3, D to 4, E to 5, F to 6, G to 7, H to 8, I to 9, and J to 10. Use the one-hole punch to punch a hole through the black dot on top of the Star. Tie a piece of string through the hole and knot it. Tie and knot the other end of the string securely to the embroidery hoop for hanging.
3. To assemble the Moon, score lightly along the dashed lines with a cutting knife. Use a ruler to ensure edges are straight. Glue A to the underside of 1, B to 2, C to 3, D to 4 and so on all the way to gluing Tab R to the underside of 18. Use the one-hole punch to punch a hole through the black dot on top of the Moon. Tie a piece of string through the hole and knot it. Tie and knot the other end of the string securely to the embroidery hoop for hanging.
4. To assemble the Planets, score lightly along all the dashed lines. Use a toothpick to poke out the tiny black holes. Glue Tab A to the top of 1 and Tab B to the top of 2. Glue each Tab C to the top of the 3 next to it. Do this for all of the C tabs at the top of the planet. Glue each Tab D to the top of the 4 next to it. Do this for all of the D tabs at the top of the planet. Glue each Tab E to the top of the 5 next to it. Do this for all of the E tabs at the bottom of the planet. Tie and knot the other end of the string securely to the embroidery hoop for hanging.
5. Space out the placement of all the Stars, Moon, and Planets evenly along the embroidery hoop.
6. Tie the 24-inch string at the top of the hoop, making sure to knot securely at both points.
7. Have a grown-up screw in the metal hook into the ceiling. Hang the mobile off the hook.



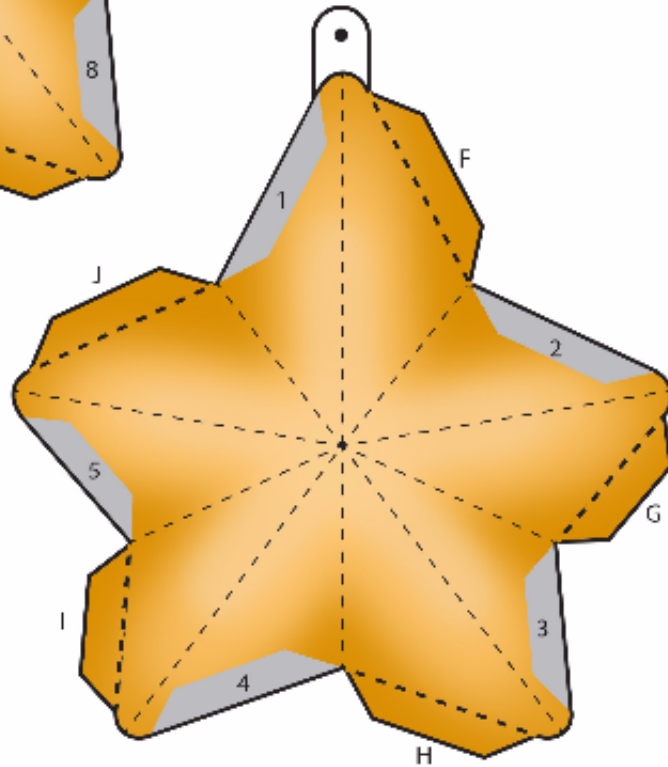
DisneyJunior.com  
© Disney



# BEAR'S MOON JUMP MOBILE

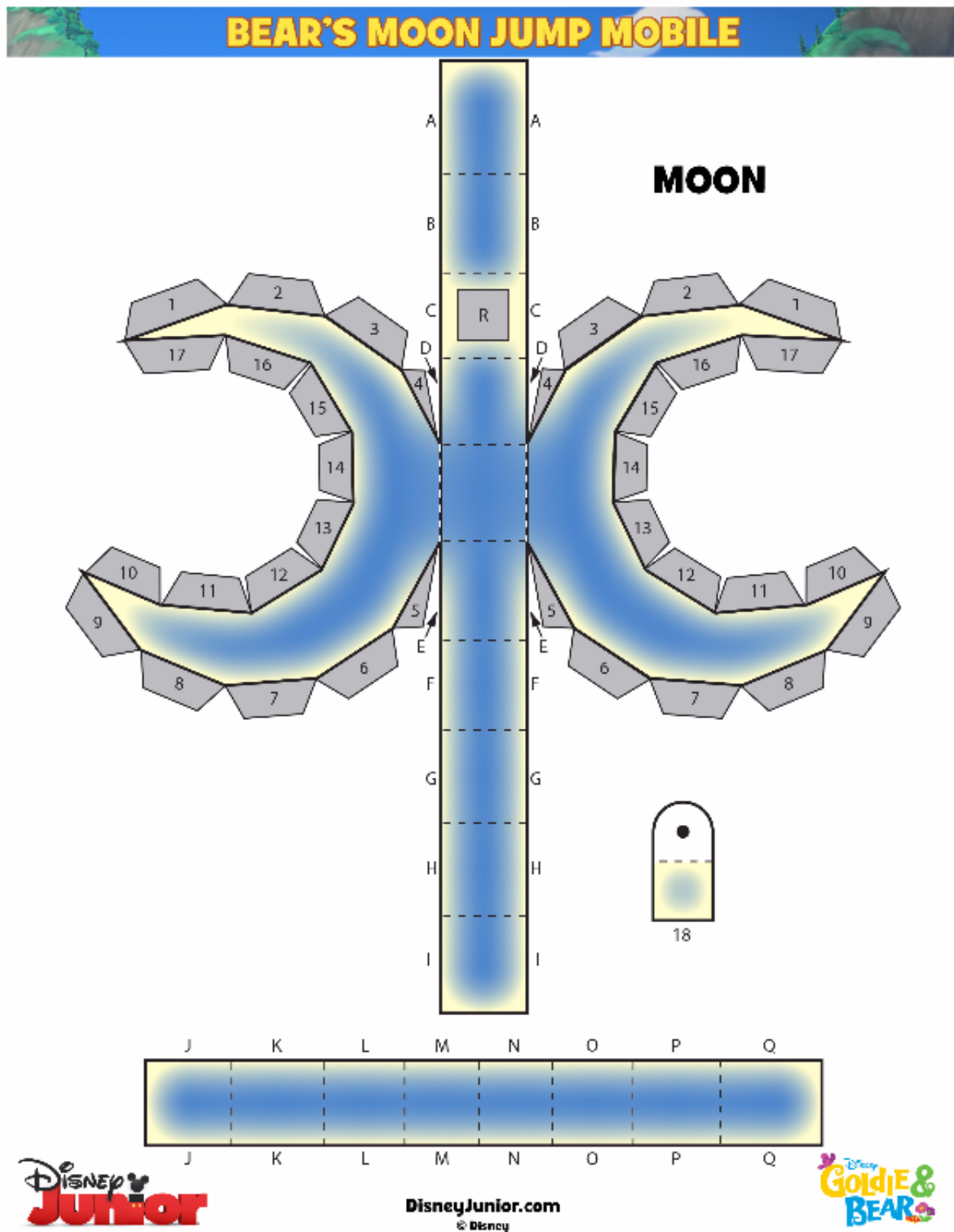


## STAR

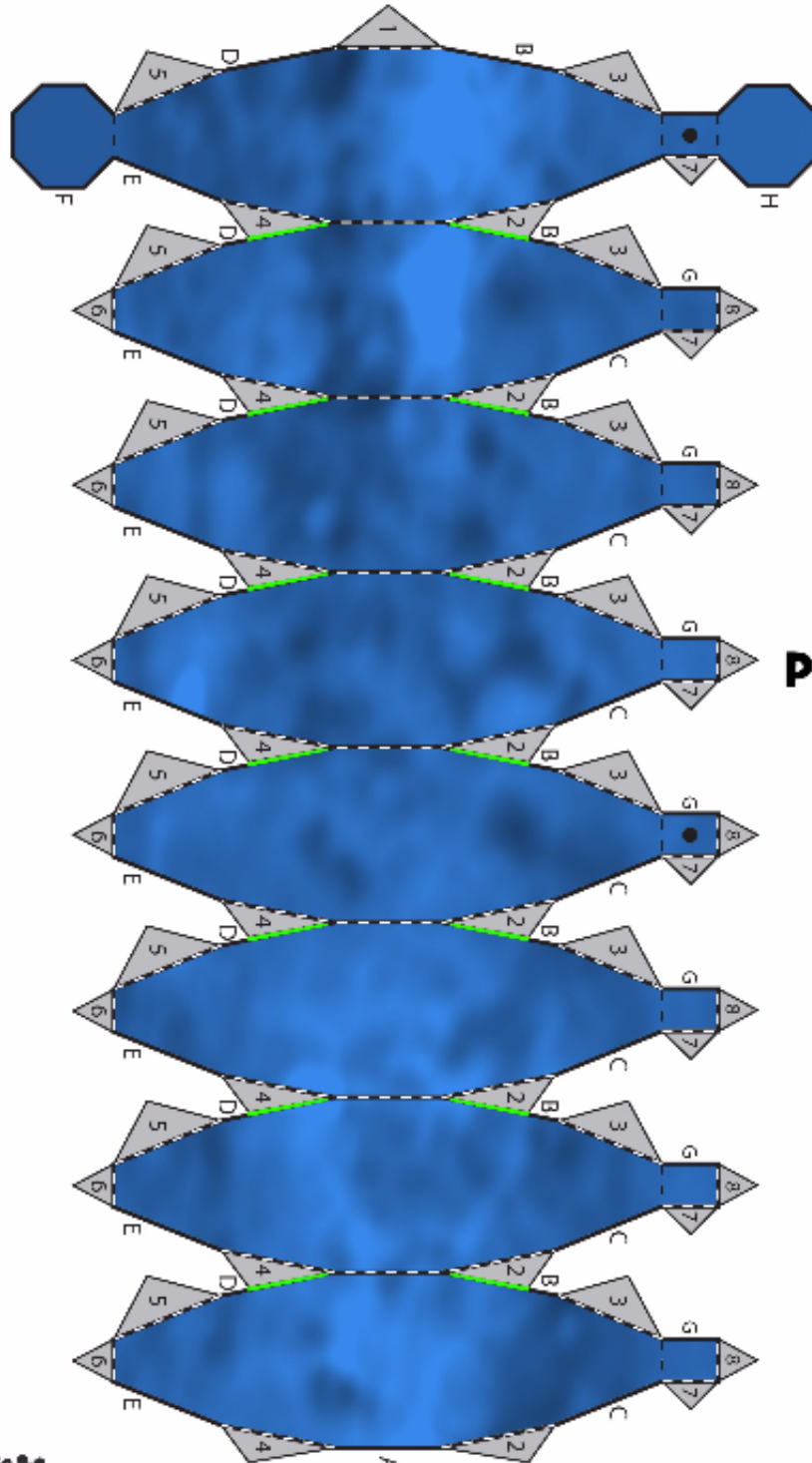


DisneyJunior.com  
© Disney





# BEAR'S MOON JUMP MOBILE



**PLANET**

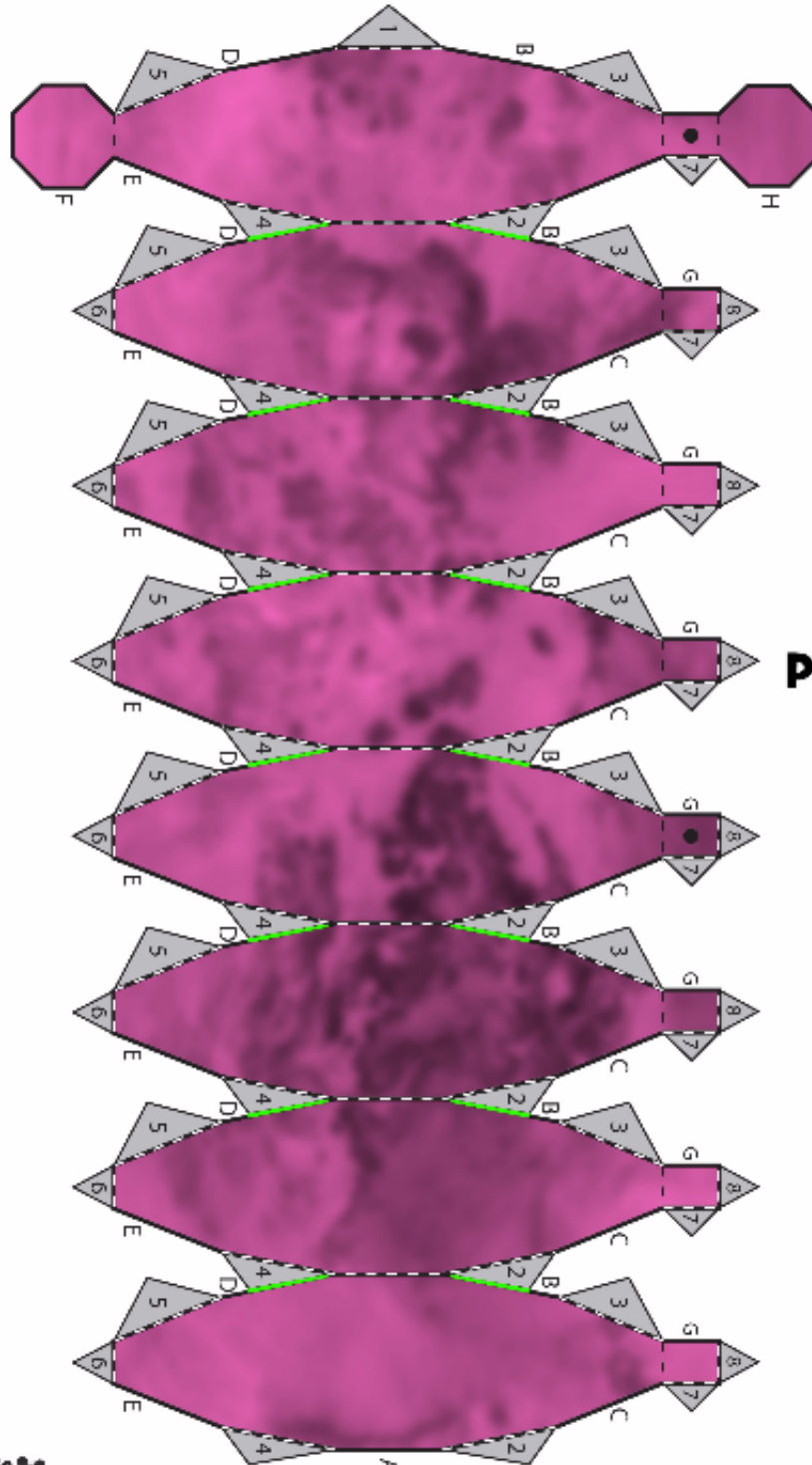


DisneyJunior.com  
© Disney





# BEAR'S MOON JUMP MOBILE



**PLANET**



DisneyJunior.com  
© Disney

