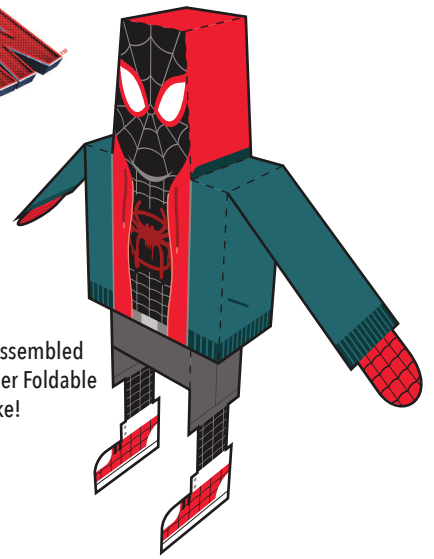


SPIDER-MAN

INTO THE SPIDER-VERSE

Assemble legs and connect tabs to slits on bottom of torso

This is what your assembled Miles Morales Paper Foldable will look like!



Tape/glue leg sides together

Print template on cardstock paper. Cut-out along black outlines. Fold on dashed lines. Tape or glue tabs to corresponding sides (double-sided tape or glue stick recommended). Assemble separate parts.

Tape/glue arm sides together



ON 4K ULTRA HD™ COMBO PACK AND DIGITAL

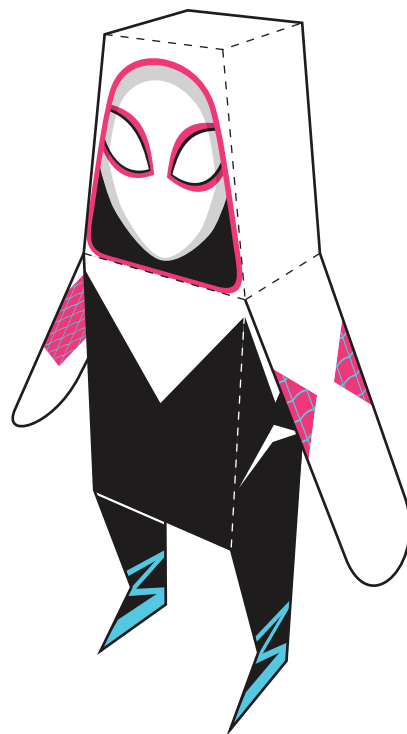
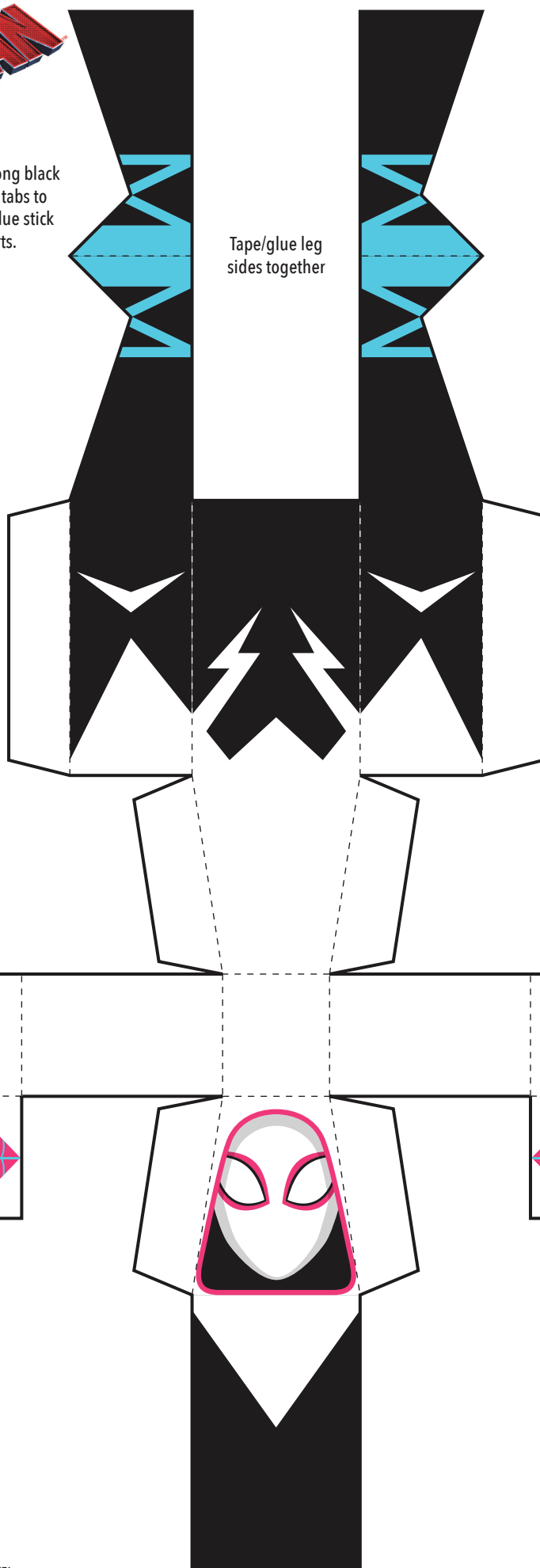
Tape/glue arm sides together

Cut indicated slits to connect legs

SPIDER-MAN

INTO THE SPIDER-VERSE

Print template on cardstock paper. Cut-out along black outlines. Fold on dashed lines. Tape or glue tabs to corresponding sides (double-sided tape or glue stick recommended). Assemble separate parts.



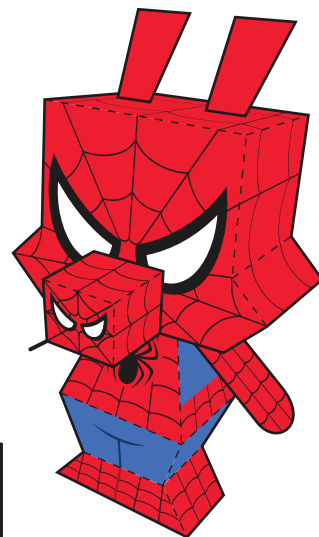
This is what your assembled **Gwen Stacy** Paper Foldable will look like!



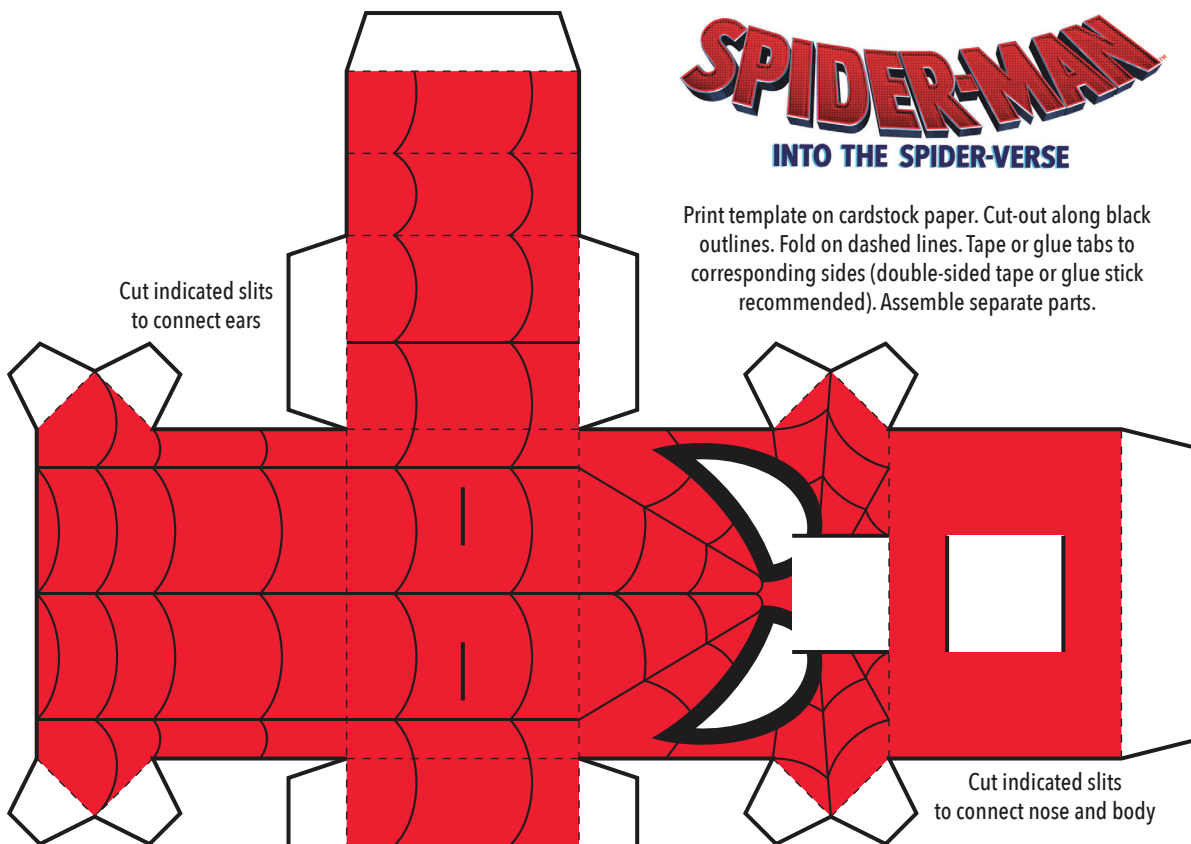
SPIDER-MAN

INTO THE SPIDER-VERSE

Print template on cardstock paper. Cut-out along black outlines. Fold on dashed lines. Tape or glue tabs to corresponding sides (double-sided tape or glue stick recommended). Assemble separate parts.



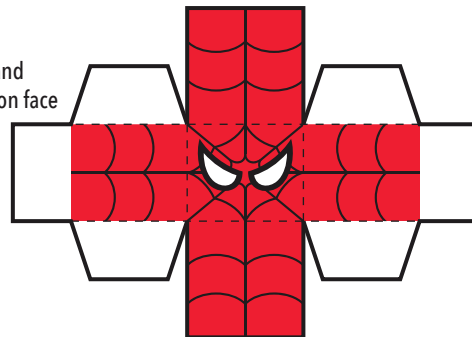
This is what your assembled **Spider-Ham** Paper Foldable will look like!



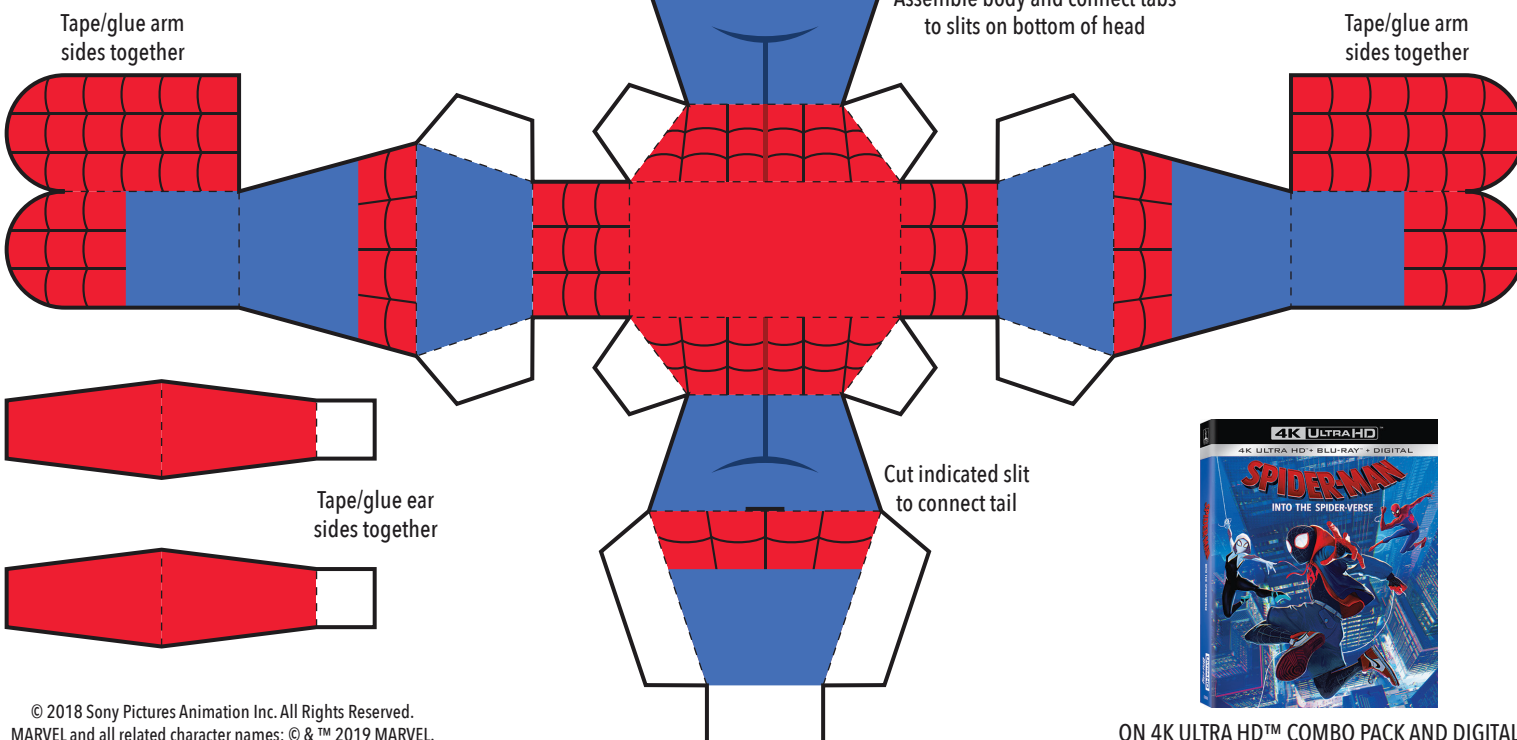
Tape/glue tail sides together



Assemble nose and connect tabs to slits on face



Assemble body and connect tabs to slits on bottom of head



Tape/glue ear sides together

Cut indicated slit to connect tail

