

CREATE YOUR OWN



HAT & MOUSTACHE



© 2020 Nintendo

DOWNLOAD YOUR UHU SUPER MARIO PAPERCRAFTS  
FROM **WWW.UHU-BTS.COM**

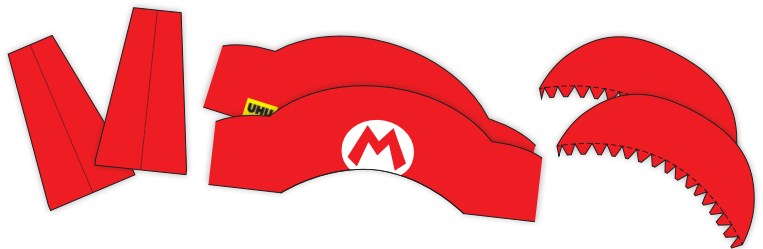
**UHU**<sup>®</sup>  
glues anything, anytime.

# CREATE YOUR SUPER MARIO HAT IN JUST A FEW STEPS

**1.**  
PRINT OUT YOUR  
PAPERCRAFT ITEMS.



**2.**  
CUT OUT ALL HAT PARTS.

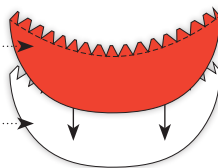


**3.**  
FIRST GLUE PARTS 4/1 AND 4/2  
TOGETHER. THEN FOLD ALONG  
THE DOTTED LINE AND GLUE  
IT TO THE BACK OF PART 2/1.



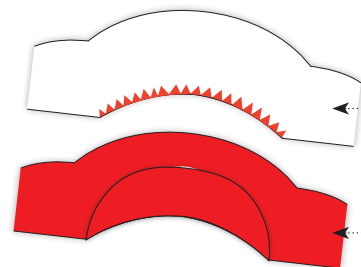
Part 4/1

Part 4/2



Back of  
Part 2/1

Front of  
Part 2/1

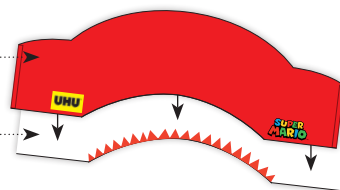


**4.**  
GLUE PARTS 2/1 AND 2/2 TOGETHER.  
FOLD PARTS 1 AND 3 AND GLUE  
THEM TOGETHER.



Part 2/2

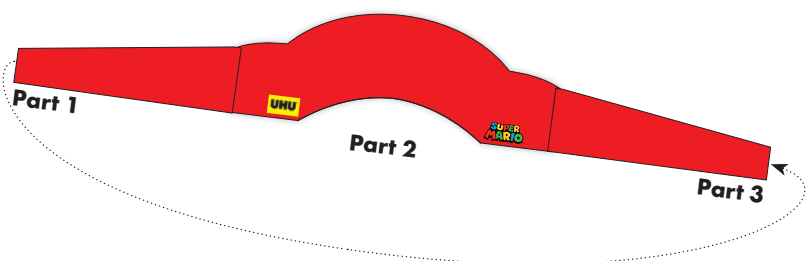
Part 2/1



Part 1  
Part 3



**5.**  
GLUE PARTS 1, 2 AND 3 TOGETHER  
AT THE MARKED POSITIONS.



ADJUST THE HAT TO YOUR  
HEAD CIRCUMFERENCE.

© 2020 Nintendo

# CREATE YOUR SUPER MARIO MOUSTACHE IN JUST A FEW STEPS

1.



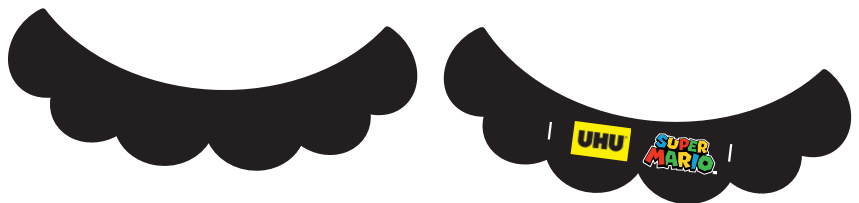
PRINT OUT YOUR  
PAPERCRAFT ITEMS.



2.



CUT OUT THE FRONT  
AND THE BACK SIDES OF  
THE MOUSTACHE.



3.

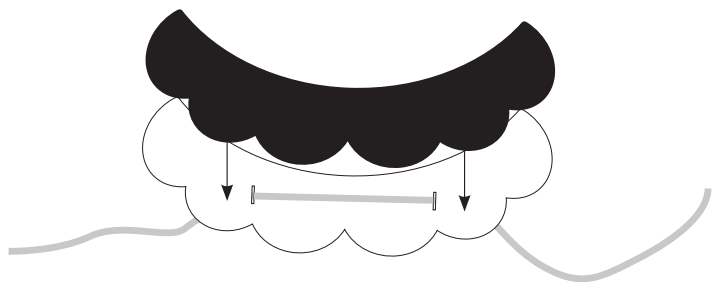
INSERT AN ELASTIC BAND  
THROUGH THE MARKED CUTS ON  
THE BACK SIDE OF THE MOUSTACHE.



4.



GLUE THE FRONT SIDE TO  
THE BACK SIDE.

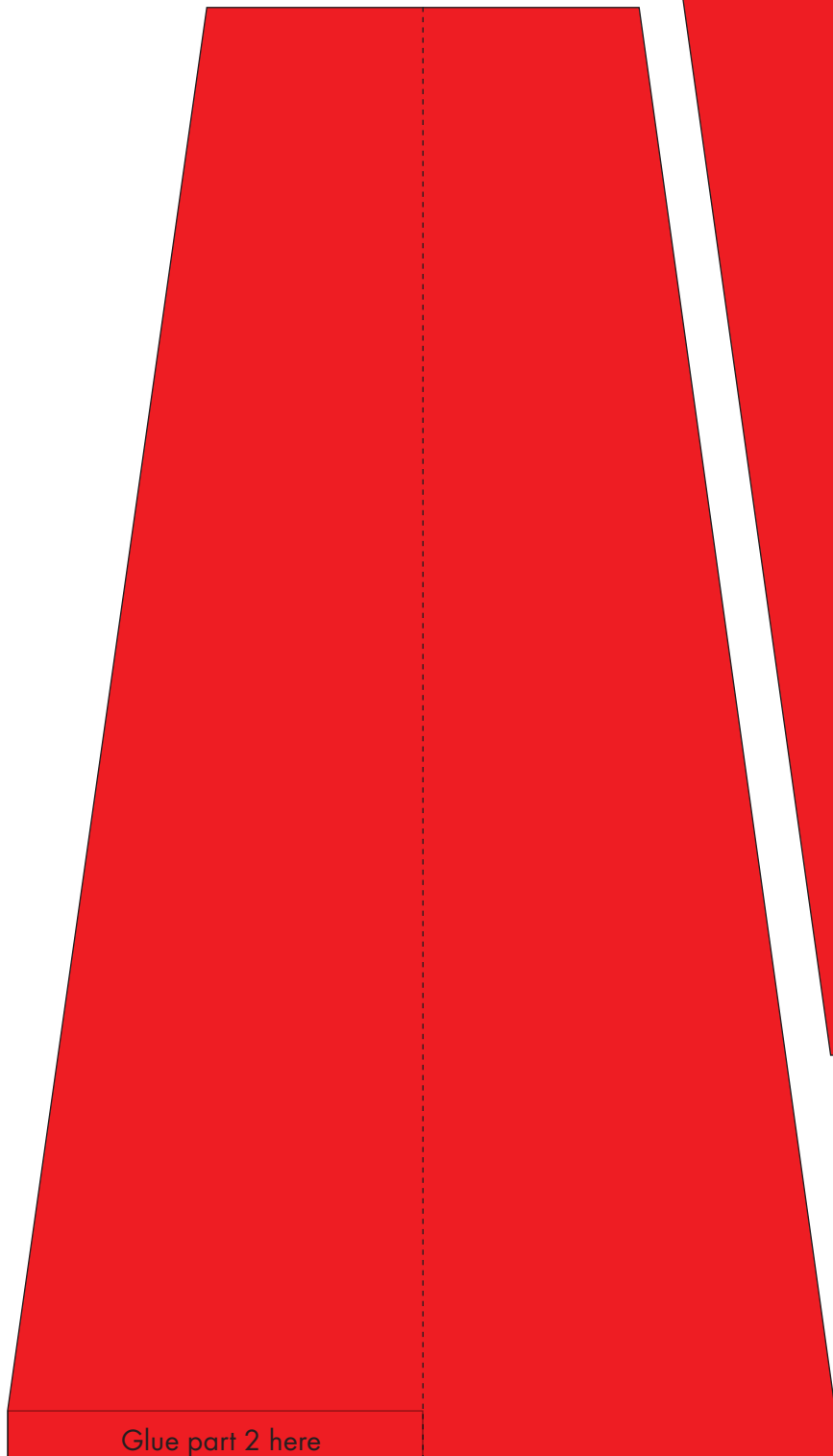


5.

NOW JUST TIE THE ELASTIC BAND  
AT THE ENDS SO THAT IT FITS WELL  
AROUND YOUR HEAD.



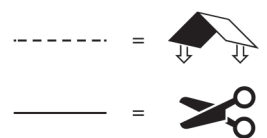
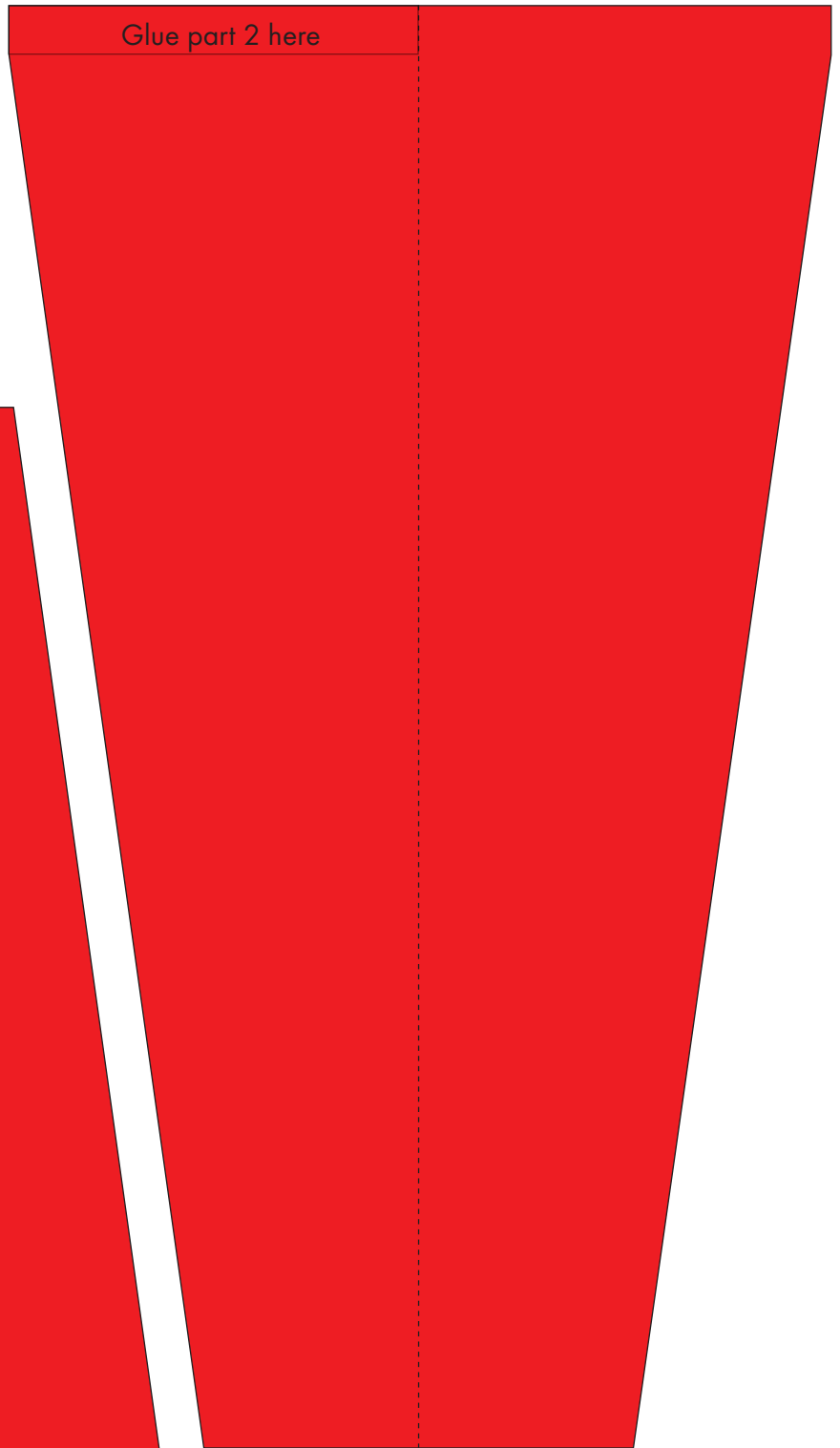
**Part 1**



Glue part 2 here

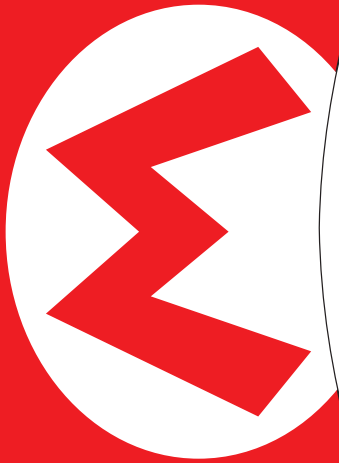
Glue part 2 here

**Part 3**



© 2020 Nintendo

Part 2/1



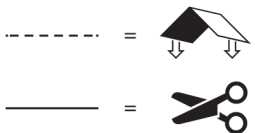
Glue part 1 here



© 2020 Nintendo

Glue part 3 here

Part 2/2

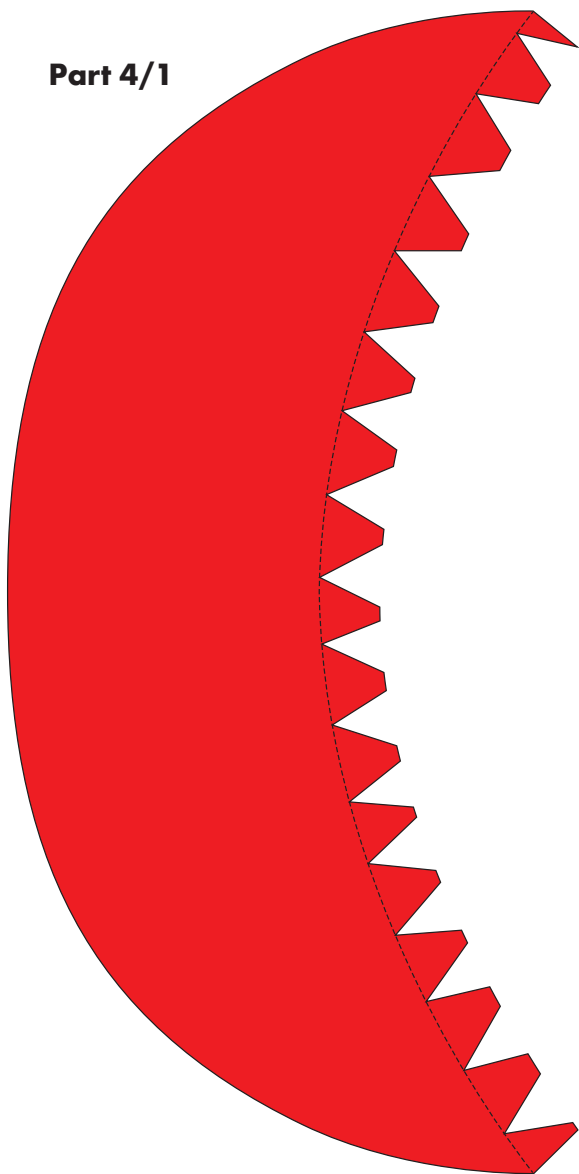


© 2020 Nintendo

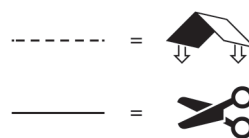
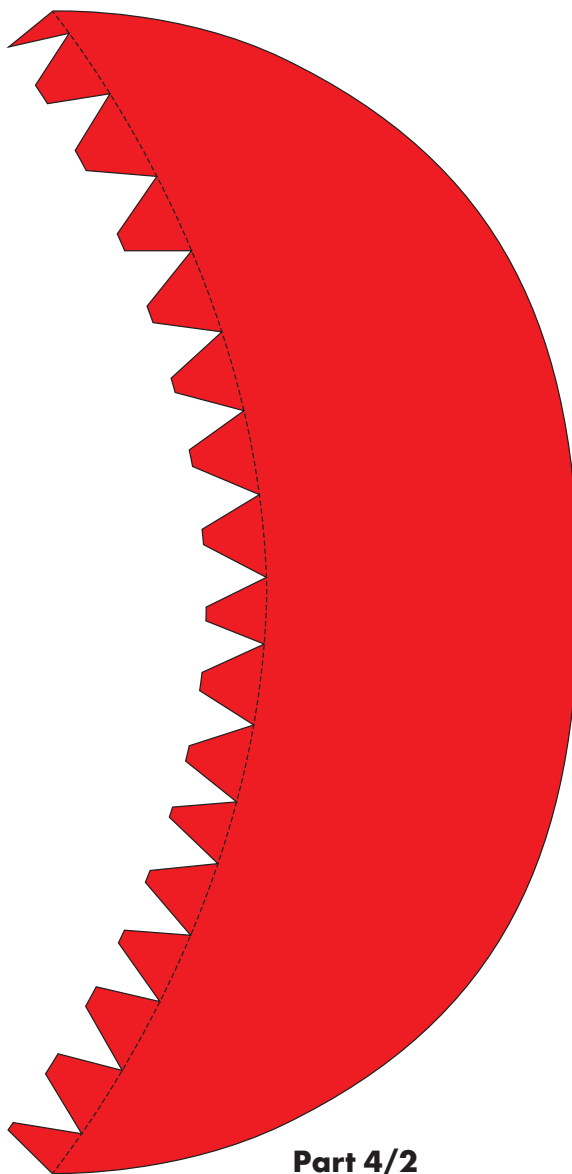
DOWNLOAD YOUR UHU SUPER MARIO PAPERCRRAFTS  
FROM **WWW.UHU-BTS.COM**

**UHU**<sup>®</sup>  
glues anything, anytime.

**Part 4/1**



**Part 4/2**

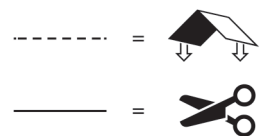


© 2020 Nintendo

**Moustache front**



**Moustache back**



© 2020 Nintendo