

MONSTER TRUCK

ASSEMBLY INSTRUCTIONS

Time to Complete: Approximately 30 minutes Level: Medium



GETTING STARTED

MATERIALS:

- Metal-edged ruler
- Butter knife
- Scissors or X-ACTO knife
- Cutting mat (optional)
- Multipurpose glue
- Hole punch
- Pencil

- 1** Score all the pieces: Using a ruler as a guide, run the back side of a butter knife firmly along dashed and dotted lines.



- 2** Using scissors or an X-ACTO knife and cutting mat, cut out pieces along solid lines.



- 3** Take the tip of a pencil and carefully poke through the X's on wheels.

- 4** Fold all pieces along score lines, using the folding key below as a reference.

Mountain Fold

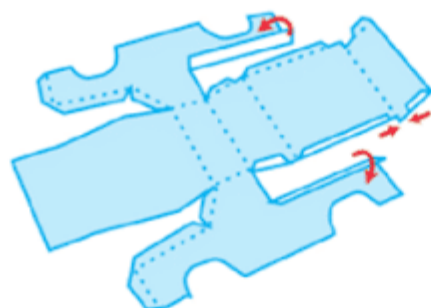


Valley Fold

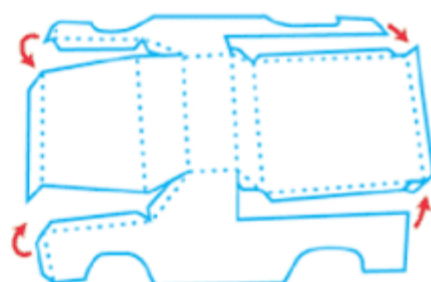


ASSEMBLE YOUR MONSTER TRUCK

- 5** Truck body: Fold down and glue truck bed sides and rear panel.



- 6** Fold down each side of truck body and glue all tabs in place.



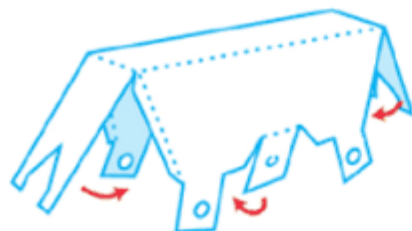
- 7** Suspension: Fold over and glue tabs A.



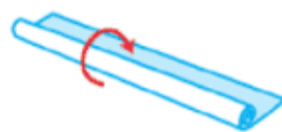
- 8** Punch a hole through the white circle on each tab A.



- 9** Fold front and back of suspension inward and glue to tabs B. Fold underside over and glue to tab C.



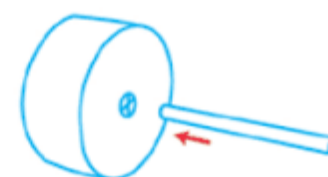
- 10** Axles: Roll axle pieces into thin tubes (smaller than the width of a pencil) and glue. Make sure axle is narrow enough to turn in holes in the suspension piece.



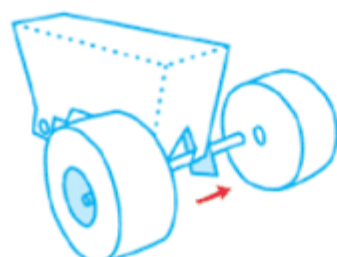
- 11** Tires: Curl a tire panel around and glue the end to tab D. Fold up sides of tire and glue to tabs. Repeat for all four tires.



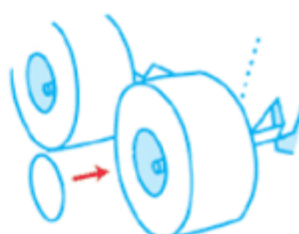
- 12** Add glue to grey area of an axle and insert into a tire at the X. Align tire with grey section of axle.



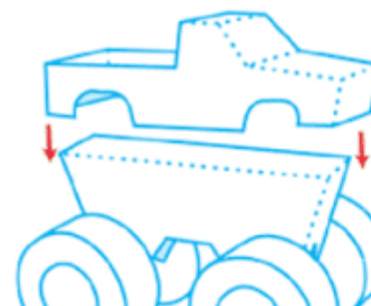
- 13** Insert other end of axle through holes in the suspension. Add glue to other grey area of axle and insert into a second tire at the X.



- 14** Repeat steps 12 and 13 for second set of tires. Glue a hubcap onto the outside of each tire.



- 15** Glue bottom of truck bed to top of suspension. Make sure the truck and suspension are centered.



- 16** You're done!

