

nickelodeon

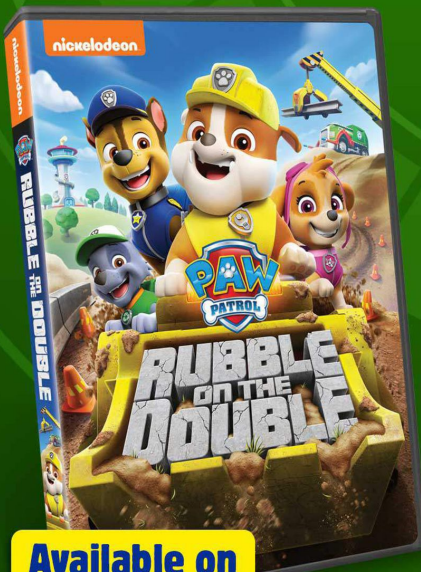


# RUBBLE MASK CRAFT

**SUPPLIES:** • 1 sheet of yellow foam • 1 sheet of white foam  
• 1 sheet of brown foam • 1 small sheet of gray foam  
• Glue Gun & Hot Glue • Ribbon • Scissors • Glue stick • Templates

## INSTRUCTIONS:

1. Print and prepare mask templates.
    - a) 1 brown face outline. b) 1 anchor-shaped white piece for Rubble's white fur coloring.
    - c) 1 gray badge. d) 1 yellow helmet. e) 1 small yellow rectangular piece to add to the helmet.
    - f) 2 small white pieces for the ears.
  2. Cut out the foam pieces for the mask using the templates.  
Don't forget to cut out the circles for the eyes from the large brown face outline.
  3. Assemble mask:
    - a) Use large brown piece as the mask base and glue Rubble's white coat coloring pieces on top.
    - b) Next, glue on Rubble's construction helmet (larger yellow piece).
    - c) In the center of this yellow piece, glue over the smaller yellow rectangle to achieve a 3D look for the mask.
    - d) Glue the gray badge on the top center part of the yellow helmet.
    - e) Glue the small white pieces on top of Rubble's ears.  
Make sure you add them on the ear portion closest to Rubble's face.
  4. Once all the pieces are glued, use a hole puncher on the left and right edges of the mask.
  5. Thread ribbon through the holes to make the mask ties.
- All done! To use the mask, tie the ribbon ends around the back of your head.



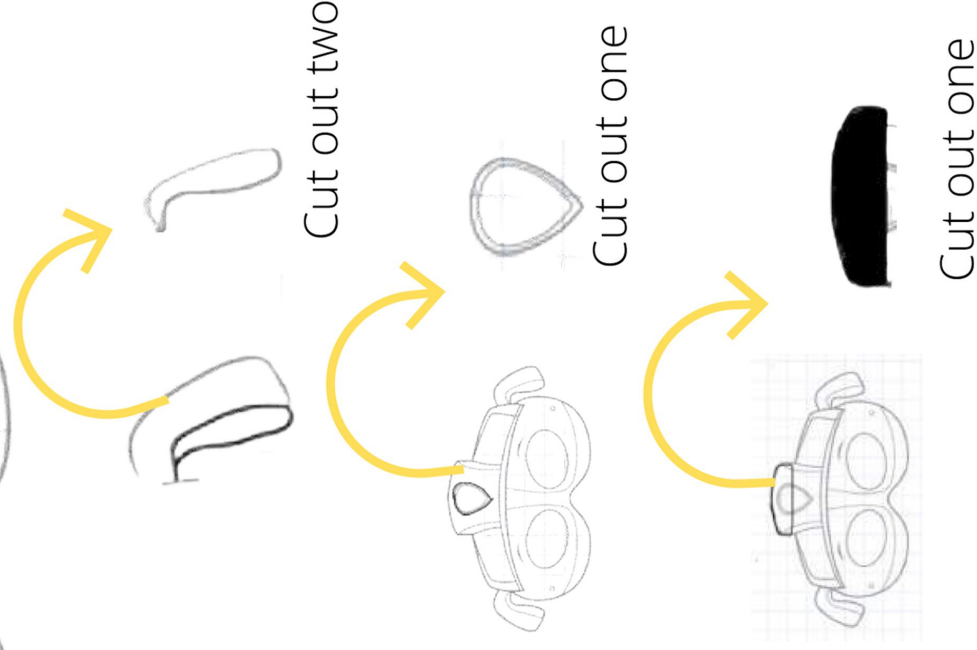
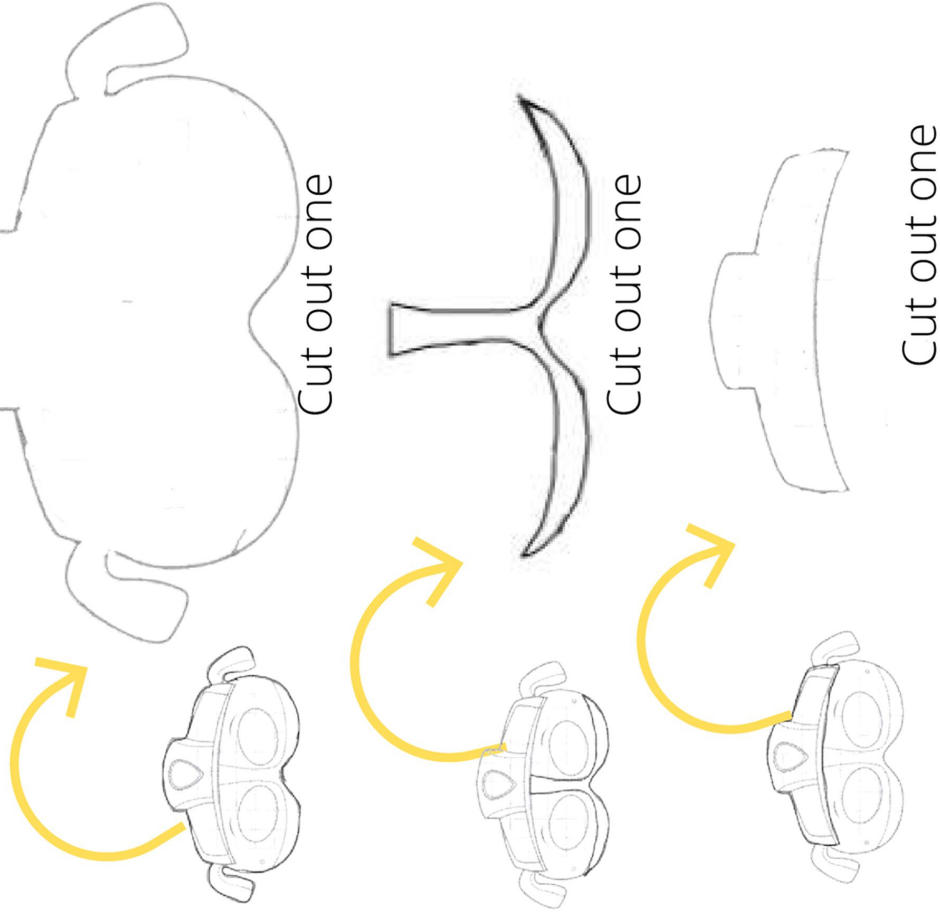
**Available on  
January 19**

Courtesy of [CoolMomsCoolTips.com](http://CoolMomsCoolTips.com)

©Spin Master Ltd.™ PAW PATROL and all related titles, logos, characters; and SPIN MASTER logo are trademarks of Spin Master Ltd. Used under license.  
Nickelodeon and all related titles and logos are trademarks of Viacom International Inc.

# Paw Patrol Rubble Mask

Trace each shape to cut and create  
courtesy of **COOL MOMS COOL TIPS**





Paw Patrol Rubble Mask

