

Learning Activity Booklet

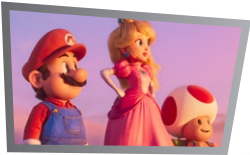


Contents

- 3** Escape from Bowser
 - 4** Mario's World of Words
 - 5** Crack Toad's Code
 - 6** What's inside Luigi's Tool Bag?
 - 7** Mushroom Kingdom Missing Numbers
 - 8** A Poem for Princess Peach
 - 9** Making a Magical Mushroom Land
- Answers**

Escape from Bowser

Find a path through the maze to help Luigi escape from Bowser and get back to Mario and his friends.



Mario's World of Words

Can you help Mario to find the ten words in the word search below?

Remember to look across and down to find them all.



- Mario
- plumber
- Luigi
- Toad
- Bowser
- brothers
- Peach
- Koopa
- hero
- mushroom

| | | | | | | | | |
|---|---|---|---|---|---|---|---|---|
| k | o | o | p | a | f | v | m | b |
| l | t | u | l | u | i | g | i | r |
| b | o | k | u | g | b | a | k | o |
| o | a | g | m | a | r | i | o | t |
| w | d | f | b | w | c | k | p | h |
| s | z | p | e | a | c | h | l | e |
| e | r | i | r | w | y | e | u | r |
| r | d | u | q | e | t | r | h | s |
| m | u | s | h | r | o | o | m | x |

Crack Toad's Code

Toad has mixed up some numbers with different Super Mario Bros. characters. Each character below is the same as a number. Use your maths skills to crack Toad's code.

$$\text{Mario} + 7 = 10$$

$$8 - \text{Toad} = 4$$

$$\text{Bowser} + \text{Mario} = 9$$

$$20 - \text{Luigi} = 19$$

$$\text{Princess Peach} + \text{Bowser} = 11$$

$$\text{Fire Flower} + \text{Luigi} = 10$$

$$\square - \text{Fire Flower} = \text{Bowser}$$

| | | | | | |
|---|---|----------------------|---|---|----------------------|
|  | = | <input type="text"/> |  | = | <input type="text"/> |
|  | = | <input type="text"/> |  | = | <input type="text"/> |
|  | = | <input type="text"/> |  | = | <input type="text"/> |

Now use the numbers you have found to solve these number sentences.

| | | | | | | | |
|----------|---|---|---|----------------------|---|---|----------------------|
| 1 |  | + |  | = | <input type="text"/> | | |
| 2 | Double |  | = | <input type="text"/> | | | |
| 3 |  | + |  | + |  | = | <input type="text"/> |
| 4 | 1 more than |  | = | <input type="text"/> | | | |
| 5 | Half of |  | = | <input type="text"/> | | | |

What's inside Luigi's Tool Bag?

What could be inside Luigi's tool bag? List some of the things that he might store inside it.



Words and Phrases Bank

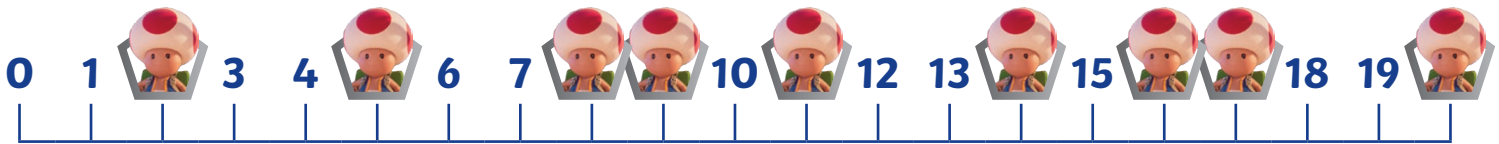
| | |
|---------|---------------|
| heavy | round |
| small | square |
| fluffy | blue |
| metal | shiny |
| green | soft |
| smooth | bendy |
| hard | thick |
| scary | bright |
| light | curvy |
| plastic | sharp edge |
| | wooden handle |

Write some sentences to describe the things in Luigi's tool bag, using the **Words and Phrases Bank** to help you.

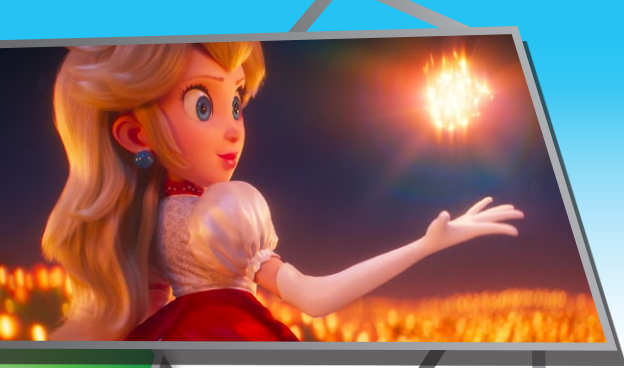
Mushroom Kingdom Missing Numbers

Lots of numbers have gone missing on this number line so Toad has jumped into their spaces.

Work out which numbers are missing, then write them in the table below to sort them into odd and even numbers.



|  Odd | Even  |
|---|---|
| | |



Nintendo + ILLUMINATION
THE SUPER MARIO BROS. MOVIE

A Poem for Princess Peach

Write an acrostic poem about Princess Peach using some of the letters from the start of her name.



P

R

I

N

C

E

S

S

Making a Magical Mushroom Land

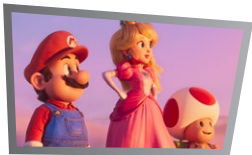
Design your own magical land like the Mushroom Kingdom for Mario.



Escape from Bowser

Answers

Find a path through the maze to help Luigi escape from Bowser and get back to Mario and his friends.

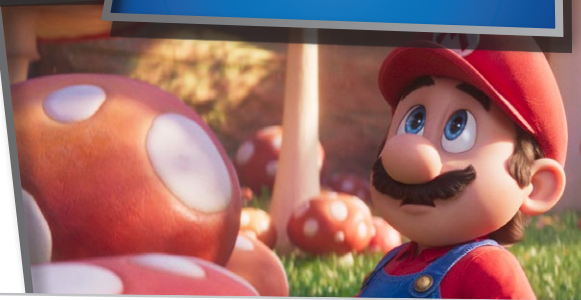


Mario's World of Words

Answers

Can you help Mario to find the ten words in the word search below?

Remember to look across and down to find them all.



- Mario
- plumber
- Luigi
- Toad
- Bowser
- brothers
- Peach
- Koopa
- hero
- mushroom

| | | | | | | | | |
|---|---|---|---|---|---|---|---|---|
| k | o | o | p | a | f | v | m | b |
| l | t | u | l | u | i | g | i | r |
| b | o | k | u | g | b | a | k | o |
| o | a | g | m | a | r | i | o | t |
| w | d | f | b | w | c | k | p | h |
| s | z | p | e | a | c | h | l | e |
| e | r | i | r | w | y | e | u | r |
| r | d | u | q | e | t | r | h | s |
| m | u | s | h | r | o | o | m | x |

Crack Toad's Code

Answers

Toad has mixed up some numbers with different Super Mario Bros. characters. Each character below is the same as a number. Use your maths skills to crack Toad's code.

$$\text{Mario} + 7 = 10$$

$$8 - \text{Toad} = 4$$

$$\text{Donkey Kong} + \text{Mario} = 9$$

$$20 - \text{Luigi} = 19$$

$$\text{Princess Peach} + \text{Donkey Kong} = 11$$

$$\text{Bowser} + \text{Luigi} = 10$$

$$\square - \text{Bowser} = \text{Donkey Kong}$$

| | | | | | |
|---|---|----------|---|---|----------|
|  | = | 3 |  | = | 6 |
|  | = | 1 |  | = | 4 |
|  | = | 5 |  | = | 9 |

Now use the numbers you have found to solve these number sentences.

| | | | | | | | |
|----------|---|---|---|-----------|---|---|-----------|
| 1 |  | + |  | = | 2 | | |
| 2 | Double |  | = | 8 | | | |
| 3 |  | + |  | + |  | = | 15 |
| 4 | 1 more than |  | = | 10 | | | |
| 5 | Half of |  | = | 3 | | | |

Mushroom Kingdom Missing Numbers

Answers

Lots of numbers have gone missing on this number line so Toad has jumped into their spaces.

Work out which numbers are missing, then write them in the table below to sort them into odd and even numbers.




Odd

5
9
11
17



Even

2
8
14
16
20