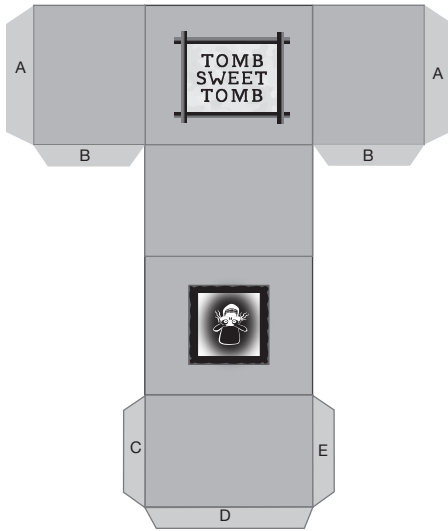


"Tomb Sweet Tomb" Box

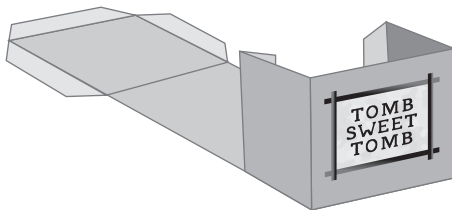


“Tomb Sweet Tomb” Box

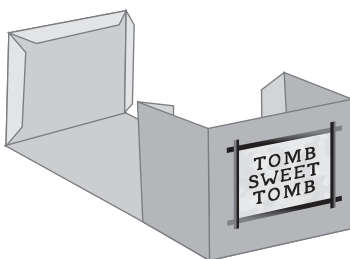
1. Print out the box on regular paper or cardstock and cut it out. Be careful not to cut where you will fold the paper.



2. Fold along the line directly below the “Tomb Sweet Tomb” sign. Fold away from you, as shown. Next, fold in the two sides. Fold tabs A & B away from you.



3. Fold tabs C, D and E inward. Then, fold the last section up, as shown.



4. Fold the last section inward and your box should now be taking shape. Glue the B tabs to the blank side of the bottom square. Then glue the A tabs to the blank side of the Ghost Portrait section. Your “Tomb Sweet Tomb” is now complete. Before you close the lid, fill it with a ghostly treat.

