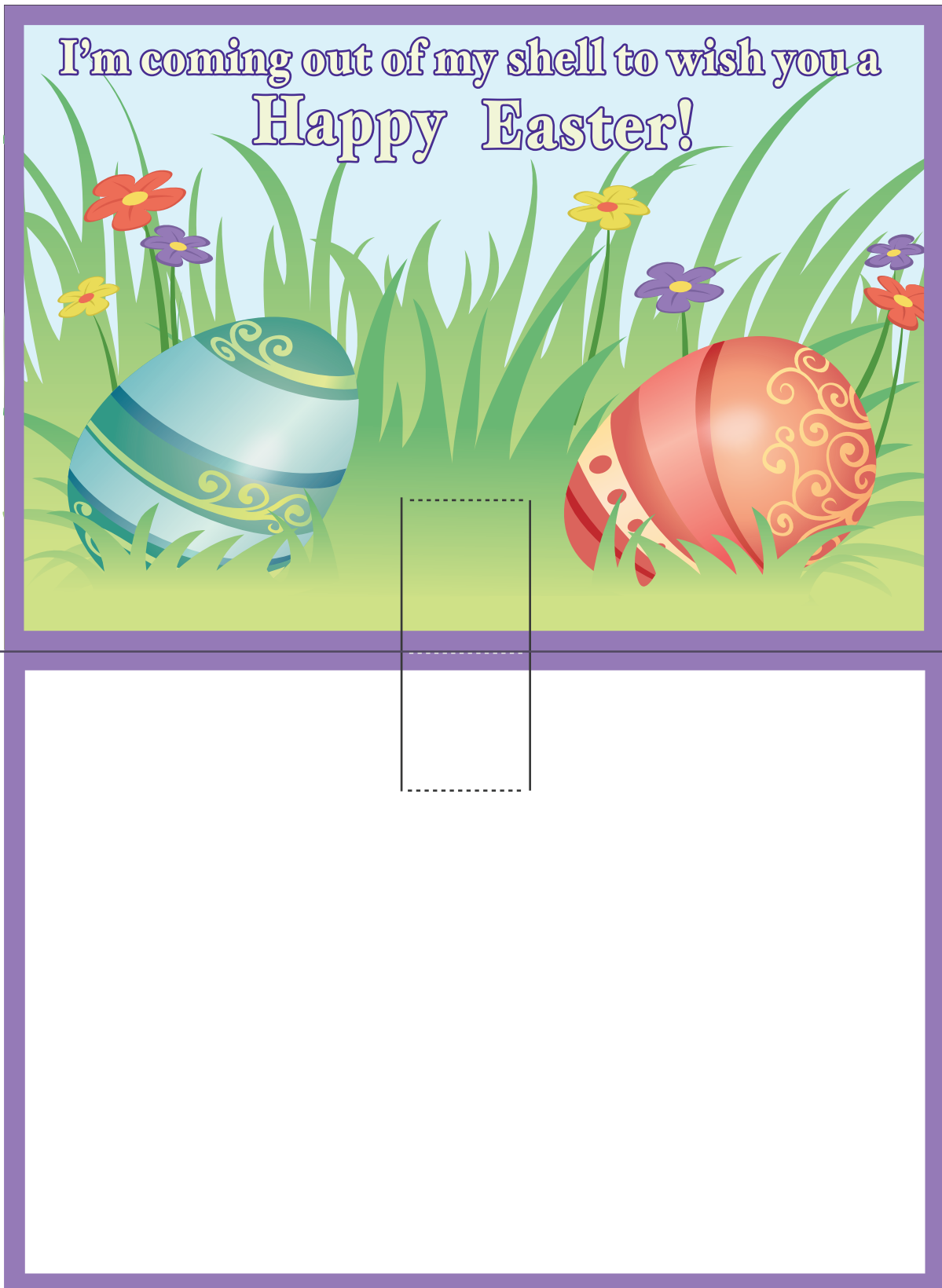




Fold

On this special day...

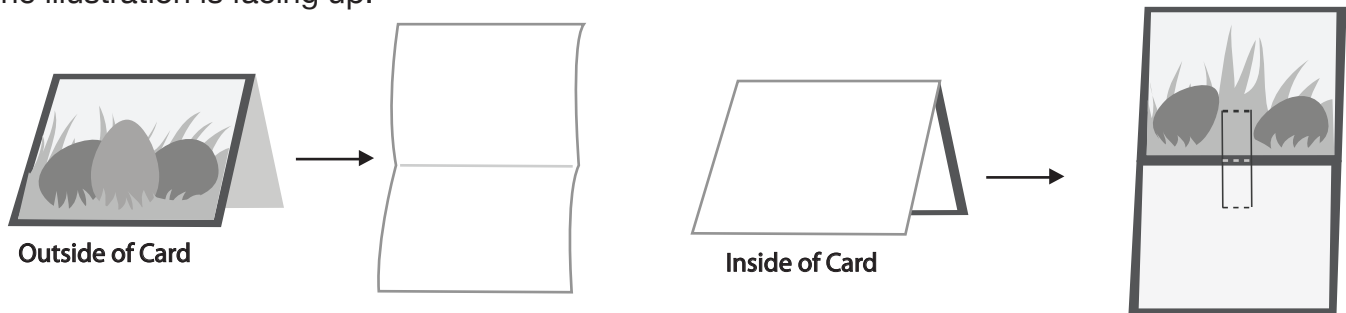




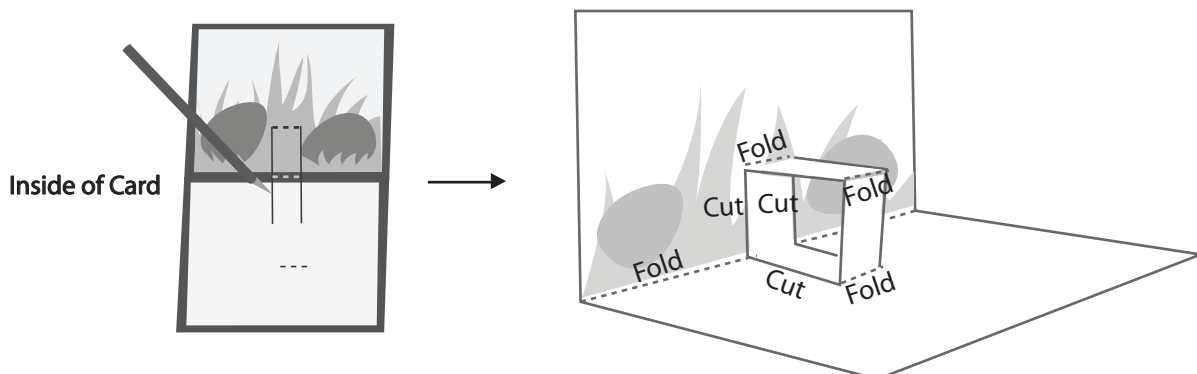
Fold



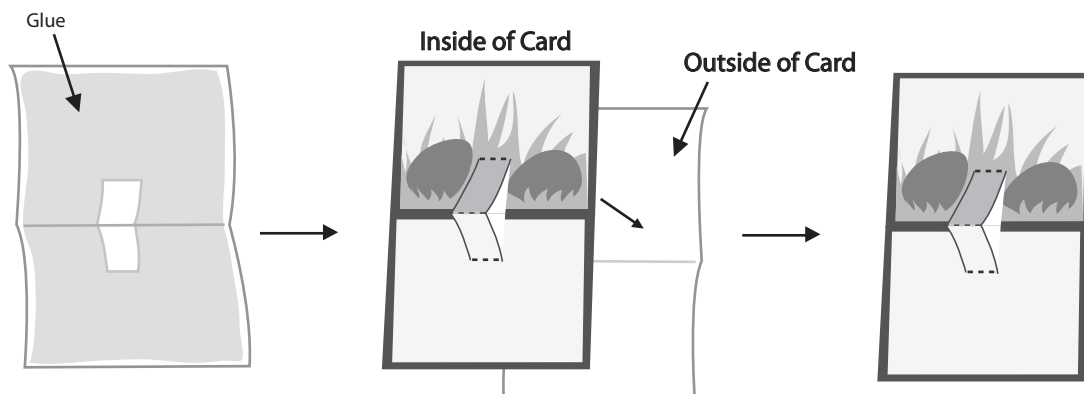
Step 1: Print out the Easter Pop-Up Card on regular paper or cardstock. Cut out the “outside” of the card and fold it (away from you) along the center line. Reopen the card and lay it flat so the blank side is facing up. Cut out the “inside” of the card and fold it (towards you) along the center line. The illustration should be on the interior of this card. Next, reopen the “inside” of the card and lay it flat so the illustration is facing up.



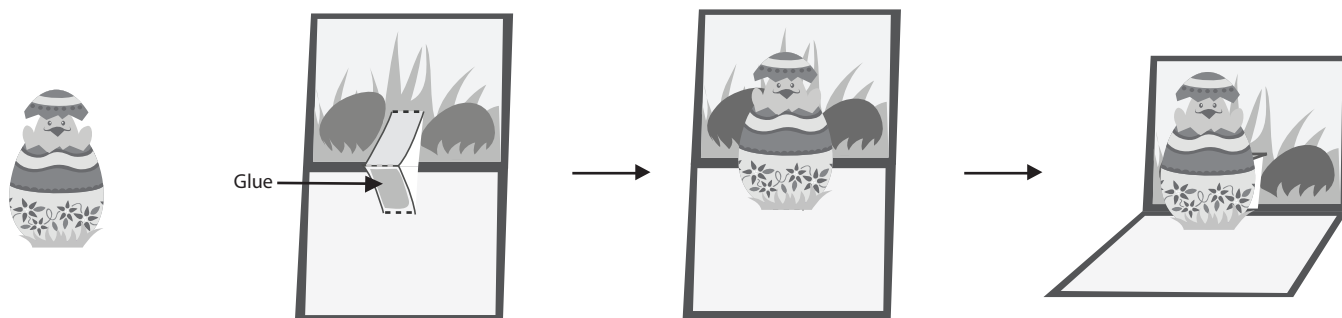
Step 2: Use a craft knife to cut along the solid vertical lines of the strip that are located in the center of the “inside” card. Pinch the cut strip and fold along the middle dashed line in the opposite direction of the card fold. Then, fold the “inside” of the card in half, which will allow the cut strip to “pop up.” When the card is open, this cutout will form a right angle.



Step 3: Turn the “inside” of the card upside down on a flat surface. The blank side of the page should be facing up. Spread glue all over the blank side of this page except in the area of the cut strip. It is very important to not place glue on the strip that pops up. Carefully place the “inside” of the card, glue side down, directly on top of the blank side of the “outside” of the card and press down firmly. The edges should line up.



Step 4: Refold the card, making sure the right cutout strip pops up out of the card. Cut out the chick in the egg from its page. Reopen the card and spread glue over the lower half of the strip (below the middle dashed line). Place the blank side of the chick in the egg on the strip so that the bottom of the egg is flush with the of the strip.



Let your Easter Pop-Up Card dry, then surprise someone this Easter with it.

